

WESTON[®]

TORNILLOS Y SUJETADORES

CALIDAD
INDUSTRIAL



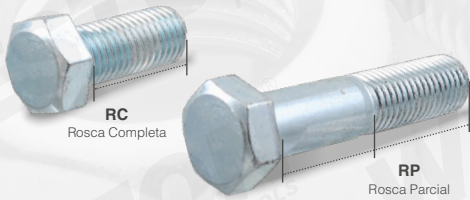
CATÁLOGO
2026

Información Importante

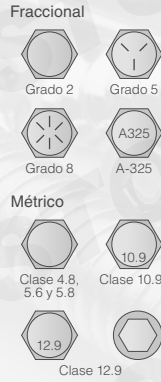
Derivado de la mejora continua, la mayoría de los códigos de tornillos, tuercas y arandelas **cambiarán de código** y llevarán **-C** al final.

El código anterior se podrá seguir pidiendo hasta agotar existencias.

Nomenclaturas y Selección de Tornillos



Marcas de Identificación de Grados



Fuerza de Tensión en Tornillos

Pulgada	Grados y Clases		Métrico MPa (megapascalas)
	PSI (libras por pulgada²)		
Grado 2 (arriba de 3/4")	58015	=	400 Clase 4.6
	60000	=	414
	60916	=	420 Clase 4.8
Grado 2 (hasta 3/4")	74000	=	510 Clase 5.6
	72519	=	500 Clase 5.8
	75420	=	520 Clase 6.8
	87023	=	600
Grado 5 (arriba de 1")	105000	=	724
	120000	=	827 Clase 8.8
	120381	=	830 Clase 9.8
Grado 7	130534	=	900
	133000	=	916
Grado 8	150000	=	1034
	150839	=	1040 Clase 10.90
ASTM A574			
<= 1/2" - 180,000 PSI			
L 9 (Grado 9)	176946	=	1220 Clase 12.90
L 9 (Grado 9)	180000	=	1240

Tornillo Hexagonal Grado 2 Pulido



Tornillo Hexagonal Grado 2 Galvanizado



Fraccional

Código	Rosca	Medidas	MIN	Código	Rosca	Medidas	MIN	Presentación
ZN-19310-C	RC	1/4"-20 x 1/2"	100	ZN-19412-C	RC	1/2"-13 x 1-3/4"	50	
ZN-19312-C	RC	1/4"-20 x 3/4"	100	ZN-19414-C	RC	1/2"-13 x 2"	50	
ZN-19314-C	RC	1/4"-20 x 1"	100	ZN-19416-C	RC	1/2"-13 x 2-1/2"	50	
ZN-19316-C	RC	1/4"-20 x 1-1/4"	100	ZN-19418-C	RC	1/2"-13 x 3"	50	
ZN-19318-C	RC	1/4"-20 x 1-1/2"	100	ZN-19420-C	RC	1/2"-13 x 3-1/2"	25	
ZN-19320-C	RC	1/4"-20 x 1-3/4"	100	ZN-19422-C	RC	1/2"-13 x 4"	25	
ZN-19322-C	RC	1/4"-20 x 2"	100	ZN-19424-C	RC	1/2"-13 x 4-1/2"	25	
ZN-19324-C	RC	1/4"-20 x 2-1/2"	100	ZN-19426-C	RP	1/2"-13 x 5"	25	
ZN-19326-C	RC	1/4"-20 x 3"	50	ZN-19428-C	RP	1/2"-13 x 5-1/2"	25	
ZN-19328-C	RC	1/4"-20 x 3-1/2"	50	ZN-19430-C	RP	1/2"-13 x 6"	25	
ZN-19330-C	RC	1/4"-20 x 4"	50	ZN-19432-C	RP	1/2"-13 x 7"	25	
ZN-19332-C	RP	1/4"-20 x 4-1/2"	50	ZN-19434-C	RP	1/2"-13 x 8"	10	
ZN-19334-C	RP	1/4"-20 x 5"	50	ZN-19436-C	RP	1/2"-13 x 10"	10	
ZN-19335-C	RP	1/4"-20 x 5-1/2"	100	ZN-19438-C	RC	5/8"-11 x 1"	50	
ZN-19337-C	RP	1/4"-20 x 6"	100	ZN-19440-C	RP	5/8"-11 x 1-1/4"	10	
ZN-19338-C	RC	5/16"-18 x 3/4"	100	ZN-19442-C	RC	5/8"-11 x 1-1/2"	50	
ZN-19340-C	RC	5/16"-18 x 1"	100	ZN-19444-C	RC	5/8"-11 x 1-3/4"	25	
ZN-19342-C	RC	5/16"-18 x 1-1/4"	100	ZN-19446-C	RC	5/8"-11 x 2"	25	
ZN-19344-C	RC	5/16"-18 x 1-1/2"	100	ZN-19448-C	RC	5/8"-11 x 2-1/2"	25	
ZN-19346-C	RC	5/16"-18 x 1-3/4"	100	ZN-19450-C	RC	5/8"-11 x 3"	25	
ZN-19348-C	RC	5/16"-18 x 2"	100	ZN-19452-C	RC	5/8"-11 x 3-1/2"	25	
ZN-19350-C	RC	5/16"-18 x 2-1/2"	100	ZN-19454-C	RC	5/8"-11 x 4"	20	
ZN-19352-C	RC	5/16"-18 x 3"	50	ZN-19456-C	RC	5/8"-11 x 4-1/2"	20	
ZN-19354-C	RC	5/16"-18 x 3-1/2"	50	ZN-19458-C	RP	5/8"-11 x 5"	20	
ZN-19356-C	RC	5/16"-18 x 4"	50	ZN-19460-C	RP	5/8"-11 x 5-1/2"	15	
ZN-19358-C	RP	5/16"-18 x 4-1/2"	50	ZN-19462-C	RP	5/8"-11 x 6"	15	
ZN-19360-C	RP	5/16"-18 x 5"	50	ZN-19462-01-C	RP	5/8"-11 x 7"	15	
ZN-19362-C	RP	5/16"-18 x 5-1/2"	50	ZN-19462-03-C	RP	5/8"-11 x 8"	25	
ZN-19364-C	RP	5/16"-18 x 6"	50	ZN-19462-05-C	RP	5/8"-11 x 9"	25	
ZN-19368-C	RC	3/8"-16 x 3/4"	100	ZN-19462-07-C	RP	5/8"-11 x 10"	25	
ZN-19370-C	RC	3/8"-16 x 1"	100	ZN-19464-C	RP	3/4"-10 x 1-1/2"	25	
ZN-19372-C	RC	3/8"-16 x 1-1/4"	100	ZN-19466-C	RC	3/4"-10 x 1-3/4"	25	
ZN-19374-C	RC	3/8"-16 x 1-1/2"	100	ZN-19468-C	RC	3/4"-10 x 2"	25	
ZN-19376-C	RC	3/8"-16 x 1-3/4"	100	ZN-19470-C	RC	3/4"-10 x 2-1/2"	20	
ZN-19378-C	RC	3/8"-16 x 2"	100	ZN-19472-C	RC	3/4"-10 x 3"	20	
ZN-19380-C	RC	3/8"-16 x 2-1/2"	50	ZN-19474-C	RC	3/4"-10 x 3-1/2"	20	
ZN-19382-C	RC	3/8"-16 x 3"	50	ZN-19476-C	RC	3/4"-10 x 4"	15	
ZN-19384-C	RC	3/8"-16 x 3-1/2"	50	ZN-19478-C	RC	3/4"-10 x 4-1/2"	15	
ZN-19386-C	RC	3/8"-16 x 4"	50	ZN-19480-C	RP	3/4"-10 x 5"	10	
ZN-19388-C	RP	3/8"-16 x 4-1/2"	50	ZN-19482-C	RP	3/4"-10 x 5-1/2"	10	
ZN-19390-C	RP	3/8"-16 x 5"	50	ZN-19484-C	RP	3/4"-10 x 6"	10	
ZN-19392-C	RP	3/8"-16 x 5-1/2"	50	ZN-19486-C	RP	3/4"-10 x 7"	10	
ZN-19394-C	RP	3/8"-16 x 6"	50	ZN-19488-C	RP	3/4"-10 x 8"	10	
ZN-19396-C	RP	3/8"-16 x 7"	50	ZN-19490-C	RP	3/4"-10 x 9"	25	
ZN-19398-C	RP	3/8"-16 x 8"	50	ZN-19492-C	RP	7/8"-9 x 2"	25	
ZN-19400-C	RP	3/8"-16 x 10"	50	ZN-19494-C	RP	7/8"-9 x 2-1/2"	15	
ZN-19401-C	RC	7/16"-14 x 1"	100	ZN-19496-C	RC	7/8"-9 x 3"	15	
ZN-19401-01-C	RC	7/16"-14 x 1-1/4"	50	ZN-19498-C	RC	7/8"-9 x 3-1/2"	15	
ZN-19401-03-C	RC	7/16"-14 x 1-1/2"	100	ZN-19500-C	RC	7/8"-9 x 4"	15	
ZN-19401-05-C	RC	7/16"-14 x 1-3/4"	100	ZN-19502-C	RC	7/8"-9 x 4-1/2"	15	
ZN-19401-07-C	RC	7/16"-14 x 2"	50	ZN-19504-C	RC	7/8"-9 x 5"	15	
ZN-19401-09-C	RC	7/16"-14 x 2-1/2"	100	ZN-19506-C	RP	7/8"-9 x 5-1/2"	10	
ZN-19401-11-C	RC	7/16"-14 x 3"	50	ZN-19508-C	RP	7/8"-9 x 6"	10	
ZN-19401-13-C	RC	7/16"-14 x 3-1/2"	50	ZN-19510-C	RP	1"-8 x 2"	10	
ZN-19401-15-C	RC	7/16"-14 x 4"	50	ZN-19520-C	RC	1"-8 x 2-1/2"	1	
ZN-19401-17-C	RP	7/16"-14 x 4-1/2"	25	ZN-19522-C	RC	1"-8 x 3"	1	
ZN-19401-19-C	RP	7/16"-14 x 5"	25	ZN-19524-C	RC	1"-8 x 3-1/2"	1	
ZN-19401-21-C	RP	7/16"-14 x 5-1/2"	50	ZN-19526-C	RC	1"-8 x 4"	1	
ZN-19401-23-C	RP	7/16"-14 x 6"	50	ZN-19528-C	RC	1"-8 x 4-1/2"	1	
ZN-19402-C	RC	1/2"-13 x 1/2"	100	ZN-19530-C	RC	1"-8 x 5"	1	
ZN-19404-C	RC	1/2"-13 x 3/4"	128	ZN-19532-C	RP	1"-8 x 5-1/2"	1	
ZN-19406-C	RC	1/2"-13 x 1"	50	ZN-19534-C	RP	1"-8 x 6"	1	
ZN-19408-C	RC	1/2"-13 x 1-1/4"	50	ZN-19536-C	RP			
ZN-19410-C	RC	1/2"-13 x 1-1/2"	50					

Fraccional

Código	Rosca	Medidas	MIN	Código	Rosca	Medidas	MIN	Presentación
ZN-19010-C	RC	1/4"-20 x 3/4"	100	ZN-19096-C	RC	1/2"-13 x 3-1/2"	20	
ZN-19012-C	RC	1/4"-20 x 1"	100	ZN-19098-C	RC	1/2"-13 x 4"	25	
ZN-19014-C	RC	1/4"-20 x 1-1/4"	100	ZN-19100-C	RP	1/2"-13 x 4-1/2"	25	
ZN-19016-C	RC	1/4"-20 x 1-1/2"	100	ZN-19102-C	RP	1/2"-13 x 5"	25	
ZN-19018-C	RC	1/4"-20 x 2"	100	ZN-19104-C	RP	1/2"-13 x 5-1/2"	25	
ZN-19020-C	RC	1/4"-20 x 2-1/2"	100	ZN-19106-C	RP	1/2"-13 x 6"	25	
ZN-19022-C	RC	1/4"-20 x 3"	50	ZN-19108-C	RP	1/2"-13 x 8"	10	
ZN-19024-C	RC	1/4"-20 x 3-1/2"	50	ZN-19110-C	RP	1/2"-13 x 10"	10	
ZN-19028-C	RP	1/4"-20 x 4-1/2"	50	ZN-19112-C	RC	5/8"-11 x 1-1/4"	50	
ZN-19030-C	RP	1/4"-20 x 5"	50	ZN-19114-C	RC	5/8"-11 x 1-1/2"	25	
ZN-19032-C	RP	1/4"-20 x 5-1/2"	50	ZN-19116-C	RC	5/8"-11 x 2"	25	
ZN-19034-C	RP	1/4"-20 x 6"	50	ZN-19120-C	RC	5/8"-11 x 3"	25	
ZN-19036-C	RC	5/16"-18 x 3/4"	100	ZN-19122-C	RC	5/8"-11 x 3-1/2"	20	
ZN-19038-C	RC	5/16"-18 x 1"	100	ZN-19124-C	RC	5/8"-11 x 4"	20	
ZN-19040-C	RC	5/16"-18 x 1-1/4"	100	ZN-19126-C	RP	5/8"-11 x 5"	15	
ZN-19042-C	RC	5/16"-18 x 1-1/2"	100	ZN-19128-C	RP	5/8"-11 x 6"	15	
ZN-19044-C	RC	5/16"-18 x 1-3/4"	100	ZN-19130-C	RP	5/8"-11 x 8"	10	
ZN-19046-C	RC	5/16"-18 x 2-1/2"	100	ZN-19132-C	RP	5/8"-11 x 10"	10	
ZN-19048-C	RC	5/16"-18 x 3"	50	ZN-19134-C	RC	3/4"-10 x 2"	20	
ZN-19050-C	RC	5/16"-18 x 3-1/2"	50	ZN-19136-C	RC	3/4"-10 x 2-1/2"	20	
ZN-19052-C	RC	5/16"-18 x 4"	50	ZN-19138-C	RC	3/4"-10 x 3"	20	
ZN-19054-C	RP	5/16"-18 x 4-1/2"	50	ZN-19140-C	RC	3/4"-10 x 3-1/2"	15	
ZN-19056-C	RP	5/16"-18 x 5"	50	ZN-19142-C	RC	3/4"-10 x 4"	15	
ZN-19058-C	RP	5/16"-18 x 5-1/2"	50	ZN-19144-C	RP	3/4"-10 x 5"	10	
ZN-19060-C	RP	5/16"-18 x 6"	50	ZN-19146-C	RP	3/4"-10 x 6"	10	
ZN-19062-C	RC	3/8"-16 x 1"	100	ZN-19148-C	RP	3/4"-10 x 8"	10	
ZN-19064-C	RC	3/8"-16 x 1-1/4"	100	ZN-19150-C	RP	3/4"-10 x 10"	10	
ZN-19066-C	RC	3/8"-16 x 1-1/2"	100	ZN-19152-C	RC	7/8"-9 x 2-1/2"	15	
ZN-19068-C	RC	3/8"-16 x 2"	100	ZN-19154-C	RC	7/8"-9 x 3"	15	
ZN-19070-C	RC	3/8"-16 x 2-1/2"	50	ZN-19156-C	RC	7/8"-9 x 3-1/2"	15	
ZN-19072-C	RC	3/8"-16 x 3"	50	ZN-19158-C	RC	7/8"-9 x 4"	15	
ZN-19074-C	RC	3/8"-16 x 3-1/2"	50	ZN-19160-C	RP	7/8"-9 x 5"	10	
ZN-19076-C	RC	3/8"-16 x 4"	50	ZN-19162-C	RP	7/8"-9 x 6"	10	
ZN-19078-C	RP	3/8"-16 x 4-1/2"	50	ZN-19166-C	RP	7/8"-9 x 10"	5	
ZN-19080-C	RP	3/8"-16 x 5"	50	ZN-19168-C	RC	1"-8 x 2-1/2"	1	
ZN-19082-C	RP	3/8"-16 x 5-1/2"	50	ZN-19170-C	RC	1"-8 x 3"	1	
ZN-19084-C	RC	1/2"-13 x 1"	50	ZN-19172-C	RC	1"-8 x 3-1/2"	1	
ZN-19086-C	RC	1/2"-13 x 1-1/4"	50	ZN-19174-C	RC	1"-8 x 4"	1	
ZN-19088-C	RC	1/2"-13 x 1-1/2"	50	ZN-19176-C	RP	1"-8 x 5"	1	
ZN-19090-C	RC	1/2"-13 x 2"	50	ZN-19180-C	RP	1"-8 x 8"	1	
ZN-19092-C	RC	1/2"-13 x 2-1/2"	50	ZN-19182-C	RP	1"-8 x 10"	1	
ZN-19094-C	RC	1/2"-13 x 3"	25	ZN-19184-C	RP	1"-8 x 12"	1	

Tornillo Hexagonal Grado 5 Negro



Fraccional

Código	Medidas	MIN	Código	Medidas	MIN
ZN-21011-C	1/4"-20 x 3/4"	100	ZN-21132-C	5/8"-11 x 3"	25
ZN-21012-C	1/4"-20 x 1"	100	ZN-21133-C	5/8"-11 x 3-1/2"	20
ZN-21013-C	1/4"-20 x 1-1/4"	100	ZN-21134-C	5/8"-11 x 4"	20
ZN-21014-C	1/4"-20 x 1-1/2"	100	ZN-21135-C	5/8"-11 x 4-1/2"	20
ZN-21015-C	1/4"-20 x 1-3/4"	100	ZN-21136-C	5/8"-11 x 5"	20
ZN-21016-C	1/4"-20 x 2"	100	ZN-21137-C	5/8"-11 x 5-1/2"	15
ZN-21017-C	1/4"-20 x 2-1/2"	100	ZN-21138-C	5/8"-11 x 6"	15
ZN-21018-C	1/4"-20 x 3"	100	ZN-21139-C	5/8"-11 x 7"	15
ZN-21019-C	1/4"-20 x 3-1/2"	100	ZN-21140-C	5/8"-11 x 8"	15
ZN-21020-C	1/4"-20 x 4"	100	ZN-21141-C	5/8"-11 x 9"	15
ZN-21021-C	1/4"-20 x 4-1/2"	100	ZN-21142-C	5/8"-11 x 10"	15
ZN-21022-C	1/4"-20 x 5"	100	ZN-21152-C	3/4"-10 x 1-1/2"	25
ZN-21023-C	1/4"-20 x 5-1/2"	650	ZN-21153-C	3/4"-10 x 1-3/4"	25
ZN-21024-C	1/4"-20 x 6"	600	ZN-21154-C	3/4"-10 x 2"	25
ZN-21036-C	5/16"-18 x 1/2"	100	ZN-21155-C	3/4"-10 x 2-1/2"	25
ZN-21037-C	5/16"-18 x 3/4"	100	ZN-21156-C	3/4"-10 x 3"	25
ZN-21038-C	5/16"-18 x 1"	100	ZN-21157-C	3/4"-10 x 3-1/2"	25
ZN-21039-C	5/16"-18 x 1-1/4"	100	ZN-21158-C	3/4"-10 x 4"	25
ZN-21040-C	5/16"-18 x 1-1/2"	100	ZN-21159-C	3/4"-10 x 4-1/2"	10
ZN-21041-C	5/16"-18 x 1-3/4"	100	ZN-21160-C	3/4"-10 x 5"	10
ZN-21042-C	5/16"-18 x 2"	100	ZN-21161-C	3/4"-10 x 5-1/2"	10
ZN-21043-C	5/16"-18 x 2-1/2"	100	ZN-21162-C	3/4"-10 x 6"	10
ZN-21044-C	5/16"-18 x 3"	50	ZN-21163-C	3/4"-10 x 7"	10
ZN-21045-C	5/16"-18 x 3-1/2"	50	ZN-21164-C	3/4"-10 x 8"	10
ZN-21046-C	5/16"-18 x 4"	50	ZN-21165-C	3/4"-10 x 9"	10
ZN-21047-C	5/16"-18 x 4-1/2"	50	ZN-21166-C	3/4"-10 x 10"	10
ZN-21048-C	5/16"-18 x 5"	50	ZN-21173-C	7/8"-9 x 2"	15
ZN-21049-C	5/16"-18 x 5-1/2"	50	ZN-21174-C	7/8"-9 x 2-1/2"	15
ZN-21050-C	5/16"-18 x 6"	50	ZN-21175-C	7/8"-9 x 3"	15
ZN-21066-C	3/8"-16 x 1/2"	100	ZN-21176-C	7/8"-9 x 3-1/2"	15
ZN-21067-C	3/8"-16 x 3/4"	100	ZN-21177-C	7/8"-9 x 4"	15
ZN-21068-C	3/8"-16 x 1"	100	ZN-21178-C	7/8"-9 x 4-1/2"	10
ZN-21069-C	3/8"-16 x 1-1/4"	100	ZN-21179-C	7/8"-9 x 5"	10
ZN-21070-C	3/8"-16 x 1-1/2"	100	ZN-21180-C	7/8"-9 x 5-1/2"	10
ZN-21071-C	3/8"-16 x 1-3/4"	100	ZN-21181-C	7/8"-9 x 6"	10
ZN-21072-C	3/8"-16 x 2"	100	ZN-21182-C	7/8"-9 x 7"	10
ZN-21073-C	3/8"-16 x 2-1/2"	50	ZN-21183-C	7/8"-9 x 8"	10
ZN-21074-C	3/8"-16 x 3"	50	ZN-21184-C	7/8"-9 x 9"	10
ZN-21075-C	3/8"-16 x 3-1/2"	50	ZN-21185-C	7/8"-9 x 10"	10
ZN-21076-C	3/8"-16 x 4"	50	ZN-21189-C	1"-8 x 2"	10
ZN-21077-C	3/8"-16 x 4-1/2"	50	ZN-21190-C	1"-8 x 2-1/2"	10
ZN-21078-C	3/8"-16 x 5"	50	ZN-21191-C	1"-8 x 3"	10
ZN-21079-C	3/8"-16 x 5-1/2"	50	ZN-21192-C	1"-8 x 3-1/2"	10
ZN-21080-C	3/8"-16 x 6"	50	ZN-21193-C	1"-8 x 4"	10
ZN-21081-C	3/8"-16 x 7"	10	ZN-21194-C	1"-8 x 4-1/2"	10
ZN-21082-C	7/16"-14 x 1"	100	ZN-21195-C	1"-8 x 5"	10
ZN-21083-C	7/16"-14 x 1-1/4"	100	ZN-21196-C	1"-8 x 5-1/2"	10
ZN-21084-C	7/16"-14 x 1-1/2"	100	ZN-21197-C	1"-8 x 6"	10
ZN-21085-C	7/16"-14 x 1-3/4"	100	ZN-21198-C	1"-8 x 7"	1
ZN-21086-C	7/16"-14 x 2"	100	ZN-21199-C	1"-8 x 8"	1
ZN-21087-C	7/16"-14 x 2-1/2"	100	ZN-21200-C	1"-8 x 9"	10
ZN-21088-C	7/16"-14 x 3"	50	ZN-21201-C	1"-8 x 10"	10
ZN-21089-C	7/16"-14 x 3-1/2"	50	ZN-21206-C	1-1/8" x 2-1/2"	10
ZN-21090-C	7/16"-14 x 4"	50	ZN-21208-C	1-1/8" x 3"	10
ZN-21091-C	7/16"-14 x 4-1/2"	50	ZN-21210-C	1-1/8" x 3-1/2"	10
ZN-21092-C	7/16"-14 x 5"	50	ZN-21212-C	1-1/8" x 4"	10
ZN-21093-C	7/16"-14 x 5-1/2"	50	ZN-21214-C	1-1/8" x 4-1/2"	10
ZN-21094-C	7/16"-14 x 6"	50	ZN-21216-C	1-1/8" x 5"	10
ZN-21096-C	1/2"-13 x 1/2"	50	ZN-21218-C	1-1/8" x 5-1/2"	10
ZN-21097-C	1/2"-13 x 3/4"	50	ZN-21220-C	1-1/8" x 6"	10
ZN-21098-C	1/2"-13 x 1"	50	ZN-21222-C	1-1/8" x 6-1/2"	5
ZN-21099-C	1/2"-13 x 1-1/4"	50	ZN-21224-C	1-1/8" x 7"	5
ZN-21100-C	1/2"-13 x 1-1/2"	50	ZN-21226-C	1-1/8" x 8"	5
ZN-21101-C	1/2"-13 x 1-3/4"	50	ZN-21228-C	1-1/8" x 9"	5
ZN-21102-C	1/2"-13 x 2"	50	ZN-21230-C	1-1/8" x 10"	5
ZN-21103-C	1/2"-13 x 2-1/2"	50	ZN-21232-C	1-1/8" x 11"	5
ZN-21104-C	1/2"-13 x 3"	25	ZN-21234-C	1-1/8" x 12"	5
ZN-21105-C	1/2"-13 x 3-1/2"	25	ZN-21236-C	1-1/4" x 2-1/2"	5
ZN-21106-C	1/2"-13 x 4"	25	ZN-21238-C	1-1/4" x 3"	5
ZN-21107-C	1/2"-13 x 4-1/2"	25	ZN-21240-C	1-1/4" x 3-1/2"	5
ZN-21108-C	1/2"-13 x 5"	25	ZN-21242-C	1-1/4" x 4"	5
ZN-21109-C	1/2"-13 x 5-1/2"	25	ZN-21244-C	1-1/4" x 4-1/2"	5
ZN-21110-C	1/2"-13 x 6"	25	ZN-21246-C	1-1/4" x 5"	5
ZN-21111-C	1/2"-13 x 7"	25	ZN-21248-C	1-1/4" x 5-1/2"	5
ZN-21112-C	1/2"-13 x 8"	25	ZN-21250-C	1-1/4" x 6"	5
ZN-21113-C	1/2"-13 x 9"	25	ZN-21252-C	1-1/4" x 6-1/2"	5
ZN-21114-C	1/2"-13 x 10"	25	ZN-21254-C	1-1/4" x 7"	5
ZN-21115-C	9/16"-12 x 1-1/4"	50	ZN-21256-C	1-1/4" x 8"	5
ZN-21116-C	9/16"-12 x 1-1/2"	50	ZN-21258-C	1-1/4" x 9"	5
ZN-21117-C	9/16"-12 x 1-3/4"	50	ZN-21260-C	1-1/4" x 10"	5
ZN-21118-C	9/16"-12 x 2"	50	ZN-21262-C	1-1/4" x 11"	5
ZN-21119-C	9/16"-12 x 2-1/2"	50	ZN-21264-C	1-1/4" x 12"	5
ZN-21120-C	9/16"-12 x 3"	50	ZN-21266-C	1-1/2" x 3"	1
ZN-21121-C	9/16"-12 x 3-1/2"	50	ZN-21268-C	1-1/2" x 3-1/2"	1
ZN-21122-C	9/16"-12 x 4"	25	ZN-21270-C	1-1/2" x 4"	1
ZN-21123-C	9/16"-12 x 4-1/2"	25	ZN-21272-C	1-1/2" x 4-1/2"	1
ZN-21124-C	9/16"-12 x 5"	25	ZN-21274-C	1-1/2" x 5"	1
ZN-21125-C	9/16"-12 x 5-1/2"	25	ZN-21276-C	1-1/2" x 5-1/2"	1
ZN-21125-01-C	9/16"-12 x 6"	25	ZN-21278-C	1-1/2" x 6"	1
ZN-21126-C	5/8"-11 x 1"	25	ZN-21280-C	1-1/2" x 7"	1
ZN-21127-C	5/8"-11 x 1-1/4"	25	ZN-21282-C	1-1/2" x 8"	1
ZN-21128-C	5/8"-11 x 1-1/2"	25	ZN-21284-C	1-1/2" x 9"	1
ZN-21129-C	5/8"-11 x 1-3/4"	25	ZN-21286-C	1-1/2" x 10"	1
ZN-21130-C	5/8"-11 x 2"	25	ZN-21288-C	1-1/2" x 11"	1
ZN-21131-C	5/8"-11 x 2-1/2"	25	ZN-21290-C	1-1/2" x 12"	1

Tornillo Hexagonal Grado 8 Negro



Fraccional

Código	Medidas	MIN	Código	Medidas	MIN
ZN-23010-C	1/4"-20 x 1/2"	100	ZN-23200-C	5/8"-11 x 11"	10
ZN-23012-C	1/4"-20 x 3/4"	100	ZN-23202-C	5/8" x 12"	10
ZN-23014-C	1/4"-20 x 1"	100	ZN-23204-C	3/4"-10 x 1-1/2"	25
ZN-23016-C	1/4"-20 x 1-1/4"	100	ZN-23206-C	3/4"-10 x 1-3/4"	25
ZN-23018-C	1/4"-20 x 1-1/2"	100	ZN-23208-C	3/4"-10 x 2"	25
ZN-23020-C	1/4"-20 x 1-3/4"	100	ZN-23210-C	3/4"-10 x 2-1/4"	25
ZN-23022-C	1/4"-20 x 2"	100	ZN-23212-C	3/4"-10 x 2-1/2"	25
ZN-23024-C	1/4"-20 x 2-1/4"	100	ZN-23214-C	3/4"-10 x 3"	25
ZN-23026-C	1/4"-20 x 2-1/2"	100	ZN-23216-C	3/4" x 3-1/2"	25
ZN-23028-C	1/4"-20 x 3"	100	ZN-23218-C	3/4"-10 x 4"	25
ZN-23030-C	1/4"-20 x 3-1/2"	100	ZN-23220-C	3/4"-10 x 4-1/2"	10
ZN-23032-C	1/4"-20 x 4"	100	ZN-23222-C	3/4"-10 x 5"	10
ZN-23034-C	5/16"-18 x 5/8"	100	ZN-23224-C	3/4"-10 x 5-1/2"	10
ZN-23036-C	5/16"-18 x 3/4"	100	ZN-23226-C	3/4"-10 x 6"	10
ZN-23038-C	5/16"-18 x 1"	100	ZN-23228-C	3/4" x 6-1/2"	10
ZN-23040-C	5/16"-18 x 1-1/4"	100	ZN-23230-C	3/4" x 7"	10
ZN-23042-C	5/16"-18 x 1-1/2"	100	ZN-23232-C	3/4"-10 x 8"	10
ZN-23044-C	5/16"-18 x 2"	100	ZN-23234-C	3/4"-10 x 9"	10
ZN-23046-C	5/16"-18 x 2-1/4"	100	ZN-23236-C	3/4"-10 x 10"	10
ZN-23048-C	5/16"-18 x 2-1/2"	100	ZN-23238-C	3/4"-10 x 11"	10
ZN-23050-C	5/16"-18 x 3"	50	ZN-23240-C	3/4"-10 x 12"	10
ZN-23052-C	5/16"-18 x 3-1/2"	50	ZN-23242-C	7/8"-9 x 2"	15
ZN-23054-C	5/16"-18 x 4"	50	ZN-23244-C	7/8"-9 x 2-1/2"	15
ZN-23056-C	5/16"-18 x 4-1/2"	50	ZN-23246-C	7/8"-9 x 3"	15
ZN-23058-C	5/16"-18 x 5"	50	ZN-23248-C	7/8"-9 x 3-1/2"	15
ZN-23060-C	5/16"-18 x 5-1/2"	50	ZN-23250-C	7/8" x 4"	15
ZN-23062-C	5/16"-18 x 6"	50	ZN-23252-C	7/8"-9 x 4-1/2"	10
ZN-23064-C	3/8"-16 x 3/4"	100	ZN-23254-C	7/8"-9 x 5"	10
ZN-23066-C	3/8"-16 x 1"	100	ZN-23256-C	7/8"-9 x 5-1/2"	10
ZN-23068-C	3/8"-16 x 1-1/4"	100	ZN-23258-C	7/8" x 6"	10
ZN-23070-C	3/8"-16 x 1-1/2"	100	ZN-23260-C	7/8"-9 x 6-1/2"	10
ZN-23072-C	3/8"-16 x 1-3/4"	100	ZN-23262-C	7/8"-9 x 7"	5
ZN-23074-C	3/8" x 2"	100	ZN-23264-C	7/8"-9 x 8"	5
ZN-23076-C	3/8"-16 x 2-1/4"	100	ZN-23266-C	7/8"-9 x 9"	5
ZN-23078-C	3/8"-16 x 2-1/2"	50	ZN-23268-C	7/8"-9 x 10"	5
ZN-23080-C	3/8"-16 x 3"	50	ZN-23270-C	7/8"-9 x 11"	5
ZN-23082-C	3/8"-16 x 3-1/2"	50	ZN-23272-C	7/8"-9 x 12"	5
ZN-23084-C	3/8"-16 x 4"	50	ZN-23274-C	1"-8 x 2"	10
ZN-23086-C	3/8"-16 x 4-1/2"	50	ZN-23276-C	1"-8 x 2-1/2"	10
ZN-23088-C	3/8"-16 x 5"	50	ZN-23278-C	1"-8 x 3"	10
ZN-23090-C	3/8"-16 x 5-1/2"	50	ZN-23280-C	1"-8 x 3-1/2"	10
ZN-23092-C	3/8"-16 x 6"	50	ZN-23282-C	1"-8 x 4"	10
ZN-23094-C	7/16"-14 x 1"	50	ZN-23284-C	1"-8 x 4-1/2"	5
ZN-23096-C	7/16"-14 x 1-1/4"	50	ZN-23286-C	1"-8 x 5"	5
ZN-23098-C	7/16"-14 x 1-1/2"	50	ZN-23288-C	1"-8 x 5-1/2"	5
ZN-23100-C	7/16"-14 x 1-3/4"	50	ZN-23290-C	1"-8 x 6"	5
ZN-23102-C	7/16"-14 x 2"	50	ZN-23292-C	1"-8 x 6-1/2"	5
ZN-23104-C	7/16"-14 x 2-1/4"	50	ZN-23294-C	1"-8 x 7"	5
ZN-23106-C	7/16"-14 x 2-1/2"	50	ZN-23296-C	1"-8 x 7-1/2"	5
ZN-23108-C	7/16"-14 x 3"	50	ZN-23298-C	1"-8 x 8"	10
ZN-23110-C	7/16"-14 x 3-1/2"	50	ZN-23300-C	1"-8 x 8-1/2"	10
ZN-23112-C	7/16"-14 x 4"	50	ZN-23302-C	1"-8 x 9"	10
ZN-23114-C	7/16"-14 x 4-1/2"	50	ZN-23304-C	1"-8 x 10"	10
ZN-23116-C	7/16"-14 x 5"	50	ZN-23306-C	1"-8 x 11"	10
ZN-23118-C	7/16"-14 x 5-1/2"	50	ZN-23308-C	1"-8 x 12"	10
ZN-23120-C	7/16"-14 x 6"	50	ZN-23310-C	1-1/8" x 2-1/2"	10
ZN-23122-C	1/2"-13 x 1"	50	ZN-23312-C	1-1/8" x 3"	10
ZN-23124-C	1/2"-13 x 1-1/4"	50	ZN-23314-C	1-1/8" x 3-1/2"	10
ZN-23126-C	1/2"-13 x 1-1/2"	50	ZN-23316-C	1-1/8" x 4"	10
ZN-23128-C	1/2" x 1-3/4"	50	ZN-23318-C	1-1/8" x 4-1/2"	10
ZN-231					

WESTON

Tornillo Hexagonal Grado 8.8 Negro



Presentación

Métrico

Código	Rosca	Medidas	MIN
ZN-25010-C	RC	M6-1.0 x 12 mm	100
ZN-25012-C	RC	M6-1.0 x 16 mm	100
ZN-25014-C	RC	M6-1.0 x 20 mm	100
ZN-25016-C	RC	M6-1.0 x 25 mm	100
ZN-25018-C	RC	M6-1.0 x 30 mm	100
ZN-25020-C	RC	M6-1.0 x 35 mm	100
ZN-25022-C	RC	M6-1.0 x 40 mm	100
ZN-25024-C	RC	M6-1.0 x 45 mm	100
ZN-25026-C	RC	M6-1.0 x 50 mm	100
ZN-25028-C	RP	M6-1.00 x 55 mm	100
ZN-25030-C	RP	M6-1.00 x 60 mm	100
ZN-25032-C	RP	M6-1.00 x 70 mm	100
ZN-25034-C	RP	M6-1.00 x 80 mm	100
ZN-25036-C	RP	M6-1.00x 90 mm	100
ZN-25038-C	RP	M6-1.00 x 100 mm	100
ZN-25040-C	RC	M8-1.25 x 16 mm	100
ZN-25042-C	RC	M8-1.25 x 20 mm	100
ZN-25044-C	RC	M8-1.25 x 25 mm	100
ZN-25046-C	RC	M8-1.25 x 30 mm	100
ZN-25048-C	RC	M8-1.25 x 35 mm	100
ZN-25050-C	RC	M8-1.25 x 40 mm	100
ZN-25052-C	RC	M8-1.25 x 45 mm	100
ZN-25054-C	RC	M8-1.25 x 50 mm	100
ZN-25056-C	RP	M8-1.25 x 55 mm	100
ZN-25058-C	RP	M8-1.25 x 60 mm	100
ZN-25060-C	RP	M8-1.25 x 65 mm	100
ZN-25062-C	RP	M8-1.25 x 70 mm	50
ZN-25064-C	RP	M8-1.25 x 80 mm	50
ZN-25066-C	RP	M8-1.25 x 90 mm	50
ZN-25068-C	RP	M8-1.25 x 100 mm	50
ZN-25070-C	RP	M8-1.25 x 110 mm	50
ZN-25072-C	RP	M8-1.25 x 120 mm	50
ZN-25073-C	RP	M8-1.25 x 140 mm	25
ZN-25074-C	RC	M10-1.50 x 16 mm	100
ZN-25076-C	RC	M10-1.50 x 20 mm	100
ZN-25078-C	RC	M10-1.50 x 25 mm	100
ZN-25080-C	RC	M10-1.50 x 30 mm	100
ZN-25082-C	RC	M10-1.50 x 35 mm	100
ZN-25084-C	RC	M10-1.50 x 40 mm	100
ZN-25086-C	RC	M10-1.50 x 45 mm	100
ZN-25088-C	RC	M10-1.50 x 50 mm	50
ZN-25090-C	RC	M10-1.50 x 55 mm	50
ZN-25092-C	RC	M10-1.50 x 60 mm	50
ZN-25094-C	RP	M10-1.50 x 65 mm	50
ZN-25096-C	RP	M10-1.50 x 70 mm	50
ZN-25098-C	RP	M10-1.50 x 80 mm	50
ZN-25100-C	RP	M10-1.50 x 90 mm	50
ZN-25102-C	RP	M10-1.50 x 100 mm	50
ZN-25104-C	RP	M10-1.50 x 110 mm	25
ZN-25106-C	RP	M10-1.50 x 120 mm	25
ZN-25108-C	RP	M10-1.50 x 140 mm	25
ZN-25110-C	RP	M10-1.50 x 150 mm	25
ZN-25112-C	RP	M10-1.50 x 120 mm	25
ZN-25114-C	RC	M12-1.75 x 25 mm	50
ZN-25116-C	RC	M12-1.75 x 30 mm	50
ZN-25118-C	RC	M12-1.75 x 35 mm	50
ZN-25120-C	RC	M12-1.75 x 40 mm	50
ZN-25122-C	RC	M12-1.75 x 40 mm	50
ZN-25124-C	RC	M12-1.75 x 50 mm	50
ZN-25126-C	RC	M12-1.75 x 55 mm	50
ZN-25128-C	RC	M12-1.75 x 60 mm	50
ZN-25130-C	RP	M12-1.75 x 65 mm	25
ZN-25132-C	RP	M12-1.75 x 70 mm	25
ZN-25134-C	RP	M12-1.75 x 80 mm	25
ZN-25136-C	RP	M12-1.75 x 90 mm	25
ZN-25138-C	RP	M12-1.75 x 100 mm	25
ZN-25140-C	RP	M12-1.75 x 100 mm	25
ZN-25142-C	RP	M12-1.75 x 120 mm	25
ZN-25144-C	RP	M12-1.75 x 130 mm	25
ZN-25146-C	RP	M12-1.75 x 140 mm	25
ZN-25148-C	RP	M12-1.75 x 150 mm	25
ZN-25150-C	RC	M16-2.0 x 40 mm	25
ZN-25152-C	RC	M16-2.0 x 45 mm	25
ZN-25154-C	RC	M16-2.0 x 50 mm	25
ZN-25156-C	RC	M16-2.0 x 55 mm	25
ZN-25158-C	RC	M16-2.0 x 60 mm	25
ZN-25160-C	RP	M16-2.00 x 70 mm	25
ZN-25162-C	RP	M16-2.00 x 80 mm	20
ZN-25164-C	RP	M16-2.00 x 90 mm	20
ZN-25166-C	RP	M16-2.00 x 90 mm	20
ZN-25168-C	RP	M16-2.00 x 110 mm	20
ZN-25170-C	RP	M16-2.00 x 120 mm	20
ZN-25172-C	RP	M16-2.00x 130 mm	15
ZN-25174-C	RP	M16-2.00x 140 mm	15
ZN-25176-C	RP	M16-2.00 x 150 mm	15
ZN-25178-C	RP	M20-2.50x 70 mm	15
ZN-25180-C	RP	M20-2.50 x 80 mm	15
ZN-25182-C	RP	M20-2.50 x 90 mm	15
ZN-25184-C	RP	M20-2.50 x 100 mm	10
ZN-25186-C	RP	M20-2.50 x 120 mm	10
ZN-25188-C	RP	M20-2.50 x 130 mm	10
ZN-25190-C	RP	M20-2.50 x 140 mm	10
ZN-25192-C	RP	M20-2.50 x 150 mm	5
ZN-25194-C	RP	M20-2.50 x 160 mm	5

Tornillo Hexagonal Estructural A325 Negro

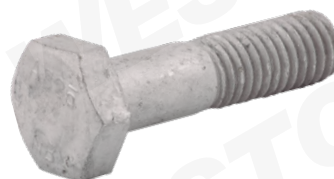


Presentación

Fraccional

Código	Medidas	MIN	Código	Medidas	MIN
ZN-09010-C	1/2"-13 x 1-1/2"	50	ZN-09038-C	5/8"-11 x 3-1/2"	20
ZN-09012-C	1/2"-13 x 1-3/4"	50	ZN-09040-C	3/4"-10 x 1-3/4"	20
ZN-09014-C	1/2"-13 x 2"	50	ZN-09042-C	3/4"-10 x 2"	20
ZN-09016-C	1/2"-13 x 2-1/4"	50	ZN-09044-C	3/4"-10 x 2-1/4"	20
ZN-09018-C	1/2"-13 x 2-1/2"	50	ZN-09046-C	3/4"-10 x 2-1/2"	20
ZN-09020-C	1/2"-13 x 2-3/4"	25	ZN-09048-C	3/4"-10 x 2-3/4"	20
ZN-09022-C	1/2"-13 x 3"	25	ZN-09050-C	3/4"-10 x 3"	20
ZN-09024-C	5/8"-11 x 1-1/2"	25	ZN-09052-C	3/4"-10 x 3-1/4"	20
ZN-09026-C	5/8"-11 x 1-3/4"	25	ZN-09054-C	3/4"-10 x 3-1/2"	20
ZN-09028-C	5/8"-11 x 2"	25	ZN-09056-C	3/4"-10 x 4"	20
ZN-09030-C	5/8"-11 x 2-1/4"	25	ZN-09058-C	1"-8 x 3"	5
ZN-09032-C	5/8"-11 x 2-1/2"	25	ZN-09060-C	1"-8 x 3-1/2"	5
ZN-09034-C	5/8"-11 x 2-3/4"	25	ZN-09062-C	1-1/4"-7 x 4"	1
ZN-09036-C	5/8"-11 x 3"	25	ZN-09064-C	1-1/4"-7 x 4-1/4"	1

Tornillo Hexagonal Estructural A325 GIC



Presentación

Fraccional

Código	Medidas	MIN	Código	Medidas	MIN
ZN-09210-C	1/2"-13 x 1-1/2"	50	ZN-09234-C	5/8"-11 x 2-3/4"	25
ZN-09212-C	1/2"-13 x 1-3/4"	50	ZN-09236-C	5/8"-11 x 3"	25
ZN-09214-C	1/2"-13 x 2"	50	ZN-09238-C	5/8"-11 x 3-1/2"	20
ZN-09216-C	1/2"-13 x 2-1/4"	50	ZN-09240-C	3/4"-10 x 1-3/4"	20
ZN-09218-C	1/2"-13 x 2-1/2"	50	ZN-09242-C	3/4"-10 x 2"	20
ZN-09220-C	1/2"-13 x 2-3/4"	25	ZN-09244-C	3/4"-10 x 2-1/4"	20
ZN-09222-C	1/2"-13 x 3"	25	ZN-09246-C	3/4"-10 x 2-1/2"	20
ZN-09224-C	5/8"-11 x 1-1/2"	25	ZN-09248-C	3/4"-10 x 2-3/4"	20
ZN-09226-C	5/8"-11 x 1-3/4"	25	ZN-09250-C	3/4"-10 x 3"	20
ZN-09228-C	5/8"-11 x 2"	25	ZN-09252-C	3/4"-10 x 3-1/4"	20
ZN-09230-C	5/8"-11 x 2-1/4"	25	ZN-09254-C	3/4"-10 x 3-1/2"	20
ZN-09232-C	5/8"-11 x 2-1/2"	25	ZN-09256-C	3/4"-10 x 4"	20

Tornillo Tipo Coche Galvanizado

Cabeza tipo coche
Acabado galvanizado



Presentación

Fraccional

Código	Medidas	MIN	Código	Medidas	MIN
ZN-05010-C	1/4"-20 x 1/2"	100	ZN-05044-C	3/8"-16 x 1-1/4"	100
ZN-05012-C	1/4"-20 x 3/4"	100	ZN-05046-C	3/8"-16 x 1-1/2"	100
ZN-05014-C	1/4"-20 x 1"	100	ZN-05048-C	3/8"-16 x 2"	50
ZN-05016-C	1/4"-20 x 1-1/4"	100	ZN-05050-C	3/8"-16 x 2-1/2"	50
ZN-05018-C	1/4"-20 x 1-1/2"	100	ZN-05052-C	3/8"-16 x 3"	50
ZN-05020-C	1/4"-20 x 2"	100	ZN-05054-C	3/8"-16 x 3-1/2"	50
ZN-05022-C	1/4"-20 x 2-1/2"	100	ZN-05056-C	3/8"-16 x 4"	50
ZN-05024-C	1/4"-20 x 3"	100	ZN-05058-C	1/2"-13 x 1"	50
ZN-05025-C	5/16"-18 x 1/2"	100	ZN-05060-C	1/2"-13 x 1-1/4"	50
ZN-05026-C	5/16"-18 x 3/4"	100	ZN-05062-C	1/2"-13 x 1-1/2"	50
ZN-05028-C	5/16"-18 x 1"	100	ZN-05064-C	1/2"-13 x 2"	50
ZN-05030-C	5/16"-18 x 1-1/4"	100	ZN-05066-C	1/2"-13 x 2-1/2"	25
ZN-05032-C	5/16"-18 x 1-1/2"	100	ZN-05068-C	1/2"-13 x 3"	25
ZN-05034-C	5/16"-18 x 2"	100	ZN-05070-C	1/2"-13 x 3-1/2"	25
ZN-05036-C	5/16"-18 x 2-1/2"	50	ZN-05072-C	1/2"-13 x 4"	25
ZN-05038-C	5/16"-18 x 3"	50	ZN-05074-C	1/2"-13 x 4-1/2"	20
ZN-05040-C	3/8"-16 x 3/4"	100	ZN-05076-C	1/2"-13 x 5"	20
ZN-05042-C	3/8"-16 x 1"	100	ZN-05078-C	1/2"-13 x 6"	20

Tornillo Allen Cilíndrico

DISPONIBLE
En acero
inoxidable
Ver pág. 389



Fraccional

Código	Medidas	MIN	Código	Medidas	MIN	Código	Medidas	MIN
ZN-11200-C	4-40 x 1/4"	100	ZN-11030-C	1/4"-20 x 3-1/2"	50	ZN-11100-C	1/2"-13 x 3"	25
ZN-11202-C	4-40 x 3/8"	100	ZN-11032-C	1/4"-20 x 4"	50	ZN-11102-C	1/2"-13 x 3-1/2"	25
ZN-11204-C	4-40 x 1/2"	100	ZN-11033-C	1/4"-20 x 4-1/2"	50	ZN-11104-C	1/2"-13 x 4"	25
ZN-11206-C	4-40 x 5/8"	100	ZN-11033-02-C	1/4"-20 x 5"	50	ZN-11106-C	1/2"-13 x 4-1/2"	25
ZN-11208-C	4-40 x 3/4"	100	ZN-11033-04-C	1/4"-20 x 5-1/2"	50	ZN-11108-C	1/2"-13 x 5"	25
ZN-11210-C	4-40 x 1"	100	ZN-11033-06-C	1/4"-20 x 6"	50	ZN-11110-C	1/2"-13 x 5-1/2"	25
ZN-11212-C	5-40 x 1/4"	100	ZN-11034-C	5/16"-18 x 1/2"	100	ZN-11112-C	1/2"-13 x 6"	25
ZN-11214-C	5-40 x 3/8"	100	ZN-11036-C	5/16"-18 x 5/8"	100	ZN-11113-C	1/2"-13 x 7"	25
ZN-11216-C	5-40 x 1/2"	100	ZN-11038-C	5/16"-18 x 3/4"	100	ZN-11114-C	5/8"-11 x 1"	50
ZN-11218-C	5-40 x 5/8"	100	ZN-11039-C	5/16"-18 x 7/8"	100	ZN-11116-C	5/8"-11 x 1-1/4"	50
ZN-11220-C	5-40 x 3/4"	100	ZN-11040-C	5/16"-18 x 1"	100	ZN-11118-C	5/8"-11 x 1-1/2"	25
ZN-11222-C	5-40 x 1"	100	ZN-11042-C	5/16"-18 x 1-1/4"	100	ZN-11119-C	5/8"-11 x 1-3/4"	50
ZN-11224-C	5-40 x 1-1/4"	100	ZN-11044-C	5/16"-18 x 1-1/2"	100	ZN-1120-C	5/8"-11 x 2"	25
ZN-11226-C	5-40 x 1-1/2"	100	ZN-11045-C	5/16"-18 x 1-3/4"	100	ZN-1122-C	5/8"-11 x 2-1/4"	25
ZN-11228-C	5-40 x 2"	100	ZN-11046-C	5/16"-18 x 2"	100	ZN-1124-C	5/8"-11 x 2-1/2"	25
ZN-11230-C	6-32 x 1/4"	100	ZN-11047-C	5/16"-18 x 2-1/4"	100	ZN-1126-C	5/8"-11 x 2-3/4"	25
ZN-11232-C	6-32 x 3/8"	100	ZN-11048-C	5/16"-18 x 2-1/2"	100	ZN-1128-C	5/8"-11 x 3"	25
ZN-11234-C	6-32 x 1/2"	100	ZN-11049-C	5/16"-18 x 2-3/4"	100	ZN-1130-C	5/8"-11 x 3-1/2"	20
ZN-11236-C	6-32 x 5/8"	100	ZN-11050-C	5/16"-18 x 3"	50	ZN-1132-C	5/8"-11 x 4"	20
ZN-11238-C	6-32 x 3/4"	100	ZN-11052-C	5/16"-18 x 3-1/2"	50	ZN-1134-C	5/8"-11 x 4-1/2"	20
ZN-11240-C	6-32 x 1"	100	ZN-11054-C	5/16"-18 x 4"	50	ZN-1136-C	5/8"-11 x 5"	15
ZN-11242-C	6-32 x 1-1/4"	100	ZN-11055-C	5/16"-18 x 4-1/2"	50	ZN-1138-C	5/8"-11 x 5-1/2"	15
ZN-11244-C	6-32 x 1-1/2"	100	ZN-11055-02-C	5/16"-18 x 5"	50	ZN-1140-C	5/8"-11 x 6"	15
ZN-11246-C	6-32 x 2"	100	ZN-11055-04-C	5/16"-18 x 5-1/2"	50	ZN-1142-C	3/4"-10 x 1-1/4"	25
ZN-11248-C	8-32 x 1/4"	100	ZN-11055-06-C	5/16"-18 x 6"	50	ZN-1143-C	3/4"-10 x 1-3/4"	50
ZN-11250-C	8-32 x 3/8"	100	ZN-11056-C	3/8"-16 x 1/2"	100	ZN-1144-C	3/4"-10 x 1-1/2"	25
ZN-11252-C	8-32 x 1/2"	100	ZN-11058-C	3/8"-16 x 5/8"	100	ZN-1146-C	3/4"-10 x 2"	20
ZN-11253-C	8-32 x 5/8"	100	ZN-11060-C	3/8"-16 x 3/4"	100	ZN-1148-C	3/4"-10 x 2-1/4"	20
ZN-11254-C	8-32 x 3/4"	100	ZN-11061-C	3/8"-16 x 7/8"	100	ZN-1150-C	3/4"-10 x 2-1/2"	15
ZN-11256-C	8-32 x 1"	100	ZN-11062-C	3/8"-16 x 1"	100	ZN-1152-C	3/4"-10 x 2-3/4"	15
ZN-11258-C	8-32 x 1-1/4"	100	ZN-11064-C	3/8"-16 x 1-1/4"	100	ZN-1154-C	3/4"-10 x 3"	15
ZN-11260-C	8-32 x 1-1/2"	100	ZN-11066-C	3/8"-16 x 1-1/2"	100	ZN-1156-C	3/4"-10 x 3-1/2"	10
ZN-11262-C	8-32 x 2"	100	ZN-11067-C	3/8"-16 x 1-3/4"	100	ZN-1158-C	3/4"-10 x 4"	10
ZN-11264-C	8-32 x 2-1/2"	100	ZN-11068-C	3/8"-16 x 2"	100	ZN-1160-C	3/4"-10 x 4-1/2"	10
ZN-11266-C	8-32 x 3"	100	ZN-11069-C	3/8"-16 x 2-1/4"	100	ZN-1162-C	3/4"-10 x 5"	10
ZN-11268-C	10-24 x 3/8"	100	ZN-11070-C	3/8"-16 x 2-1/2"	50	ZN-1164-C	3/4"-10 x 5-1/2"	10
ZN-11270-C	10-24 x 1/2"	100	ZN-11071-C	3/8"-16 x 2-3/4"	100	ZN-1166-C	3/4"-10 x 6"	10
ZN-11272-C	10-24 x 5/8"	100	ZN-11072-C	3/8"-16 x 3"	50	ZN-1168-C	7/8"-9 x 2-1/2"	5
ZN-11274-C	10-24 x 3/4"	100	ZN-11074-C	3/8"-16 x 3-1/2"	50	ZN-1170-C	7/8"-9 x 3"	5
ZN-11275-C	10-24 x 7/8"	100	ZN-11076-C	3/8"-16 x 4"	50	ZN-1172-C	7/8"-9 x 3-1/2"	5
ZN-11276-C	10-24 x 1"	100	ZN-11077-C	3/8"-16 x 4-1/2"	50	ZN-1174-C	7/8"-9 x 4"	5
ZN-11278-C	10-24 x 1-1/4"	100	ZN-11078-C	3/8"-16 x 5"	50	ZN-1176-C	7/8"-9 x 4-1/2"	5
ZN-11280-C	10-24 x 1-1/2"	100	ZN-11079-C	3/8"-16 x 5-1/2"	50	ZN-1178-C	7/8"-9 x 5"	5
ZN-11281-C	10-24 x 1-3/4"	100	ZN-11080-C	3/8"-16 x 6"	200	ZN-1180-C	7/8"-9 x 5-1/2"	5
ZN-11282-C	10-24 x 2"	100	ZN-11081-C	7/16"-14 x 3/4"	100	ZN-1182-C	7/8"-9 x 6"	5
ZN-11283-C	10-24 x 2-1/4"	50	ZN-11081-02-C	7/16"-14 x 1"	100	ZN-1183-C	1"-8 x 2"	10
ZN-11284-C	10-24 x 2-1/2"	50	ZN-11081-04-C	7/16"-14 x 1-1/4"	100	ZN-1184-C	1"-8 x 2-1/2"	1
ZN-11286-C	10-24 x 3"	50	ZN-11081-06-C	7/16"-14 x 1-1/2"	100	ZN-1186-C	1"-8 x 3"	1
ZN-11288-C	10-24 x 3-1/2"	100	ZN-11081-08-C	7/16"-14 x 1-3/4"	100	ZN-1188-C	1"-8 x 3-1/2"	1
ZN-11290-C	10-24 x 4"	100	ZN-11081-10-C	7/16"-14 x 2"	100	ZN-1190-C	1"-8 x 4"	1
ZN-11008-C	1/4"-20 x 3/8"	100	ZN-11081-12-C	7/16"-14 x 2-1/2"	100	ZN-1192-C	1"-8 x 4-1/2"	1
ZN-11010-C	1/4"-20 x 1/2"	100	ZN-11081-14-C	7/16"-14 x 3"	50	ZN-1194-C	1"-8 x 5"	1
ZN-11012-C	1/4"-20 x 5/8"	100	ZN-11081-16-C	7/16"-14 x 3-1/2"	50	ZN-1196-C	1"-8 x 5-1/2"	1
ZN-11014-C	1/4"-20 x 3/4"	100	ZN-11081-18-C	7/16"-14 x 4"	50	ZN-1198-C	1"-8 x 6"	1
ZN-11015-C	1/4"-20 x 7/8"	100	ZN-11082-C	1/2"-13 x 1/2"	50	ZN-1198-05-C	1-1/4"-7 x 3-1/2"	1
ZN-11016-C	1/4"-20 x 1"	100	ZN-11084-C	1/2"-13 x 3/4"	50	ZN-1198-10-C	1-1/4"-7 x 4"	1
ZN-11018-C	1/4"-20 x 1-1/4"	100	ZN-11086-C	1/2"-13 x 1"	50	ZN-1198-15-C	1-1/4"-7 x 4-1/2"	1
ZN-11020-C	1/4"-20 x 1-1/2"	100	ZN-11088-C	1/2"-13 x 1-1/4"	50	ZN-1198-20-C	1-1/4"-7 x 5"	1
ZN-11022-C	1/4"-20 x 1-3/4"	100	ZN-11090-C	1/2"-13 x 1-1/2"	50	ZN-1198-25-C	1-1/4"-7 x 5-1/2"	1
ZN-11024-C	1/4"-20 x 2"	100	ZN-11091-C	1/2"-13 x 1-3/4"	50	ZN-1198-30-C	1-1/4"-7 x 6"	1
ZN-11025-C	1/4"-20 x 2-1/4"	100	ZN-11092-C	1/2"-13 x 2"	50	ZN-1198-35-C	1-1/4"-7 x 7"	1
ZN-11026-C	1/4"-20 x 2-1/2"	50	ZN-11094-C	1/2"-13 x 2-1/4"	50	ZN-1198-40-C	1-1/4"-7 x 8"	1
ZN-11027-C	1/4"-20 x 2-3/4"	100	ZN-11096-C	1/2"-13 x 2-1/2"	25	ZN-1198-45-C	1-1/4"-7 x 10"	1
ZN-11028-C	1/4"-20 x 3"	50	ZN-11098-C	1/2"-13 x 2-3/4"	25	ZN-1198-50-C	1-1/4"-7 x 12"	1

**TAMBIÉN
CONTAMOS CON...**

Fijadores de roscas



- Para fijación de tuercas y tornillos
- Sustituyen arandelas
- Disponibles en resistencia baja, media y alta

Ver Marcas Globales y Ferreteria



**Tornillo Socket
Grado 12.9
Cilíndrico**



Fracional

Código	Medidas	MIN	Código	Medidas	MIN	Código	Medidas	MIN	Código	Medidas	MIN	Código	Medidas	MIN
ZN-12734-C	10-24 x 4"	50	ZN-11442-C	M4-0.70 x 35 mm	100	ZN-11508-C	M8-1.25 x 55 mm	100	ZN-12546-C	M14-2.0 x 35 mm	25	ZN-11640-C	M20-2.50 x 90 mm	5
ZN-12736-C	1/4"-20 x 3-1/4"	50	ZN-11444-C	M4-0.70 x 40 mm	100	ZN-11510-C	M8-1.25 x 60 mm	100	ZN-12548-C	M14-2.0 x 40 mm	25	ZN-11645-C	M20-2.50 x 100 mm	5
ZN-12738-C	5/16"-18 x 7"	50	ZN-11446-C	M4-0.70 x 45 mm	100	ZN-12478-C	M8-1.25 x 75 mm	100	ZN-12550-C	M14-2.0 x 45 mm	25	ZN-12642-C	M20-2.5 x 130 mm	10
ZN-12740-C	5/16"-18 x 8"	50	ZN-11448-C	M4-0.70 x 50 mm	100	ZN-11512-C	M8-1.25 x 80 mm	100	ZN-12552-C	M14-2.0 x 50 mm	25	ZN-11650-C	M20-2.50 x 120 mm	5
ZN-12742-C	3/8"-16 x 3-1/4"	50	ZN-12410-C	M4-0.70 x 60 mm	100	ZN-11514-C	M8-1.25 x 90 mm	100	ZN-12554-C	M14-2.0 x 55 mm	25	ZN-11655-C	M20-2.50 x 140 mm	5
ZN-12744-C	3/8"-16 x 6-1/2"	50	ZN-12412-C	M4-0.70 x 70 mm	100	ZN-11516-C	M8-1.25 x 100 mm	100	ZN-12556-C	M14-2.0 x 60 mm	25	ZN-12644-C	M20-2.5 x 150 mm	10
ZN-12746-C	3/8"-16 x 7"	50	ZN-12414-C	M4-0.70 x 80 mm	100	ZN-11518-C	M8-1.25 x 110 mm	100	ZN-12558-C	M14-2.0 x 65 mm	25	ZN-11660-C	M20-2.50 x 160 mm	5
ZN-12748-C	3/8"-16 x 8"	50	ZN-12416-C	M5-0.80 x 6 mm	100	ZN-12480-C	M8-1.25 x 120 mm	100	ZN-12560-C	M14-2.0 x 70 mm	25	ZN-12646-C	M20-2.5 x 180 mm	10
ZN-12750-C	7/16"-14 x 4-1/2"	50	ZN-12418-C	M5-0.80 x 12 mm	100	ZN-12482-C	M8-1.25 x 130 mm	100	ZN-12562-C	M14-2.0 x 80 mm	25	ZN-11665-C	M20-2.50 x 200 mm	5
ZN-12752-C	7/16"-14 x 5"	50	ZN-12420-C	M5-0.80 x 16 mm	100	ZN-12484-C	M8-1.25 x 140 mm	100	ZN-12564-C	M14-2.0 x 90 mm	25	ZN-12648-C	M20-2.5 x 220 mm	5
ZN-12754-C	7/16"-14 x 6"	50	ZN-12422-C	M5-0.80 x 20 mm	100	ZN-12486-C	M8-1.25 x 150 mm	100	ZN-12566-C	M14-2.0 x 100 mm	25	ZN-12650-C	M20-2.5 x 230 mm	5
ZN-12756-C	1/2"-13 x 6-1/2"	25	ZN-12424-C	M5-0.80 x 25 mm	100	ZN-12488-C	M8-1.25 x 160 mm	100	ZN-12568-C	M14-2.0 x 110 mm	25	ZN-12652-C	M20-2.5 x 250 mm	5
ZN-12758-C	1/2"-13 x 8"	25	ZN-11456-C	M5-0.80 x 30 mm	100	ZN-12490-C	M8-1.25 x 170 mm	100	ZN-12570-C	M14-2.0 x 120 mm	25	ZN-12654-C	M20-2.5 x 260 mm	5
ZN-12760-C	1/2"-13 x 9"	25	ZN-11460-C	M5-0.80 x 35 mm	100	ZN-12492-C	M10-1.5 x 12 mm	100	ZN-12572-C	M14-2.0 x 130 mm	25	ZN-12656-C	M20-2.5 x 300 mm	5
ZN-12762-C	1/2"-13 x 10"	25	ZN-11462-C	M5-0.80 x 40 mm	100	ZN-12494-C	M10-1.5 x 16 mm	100	ZN-12574-C	M14-2.0 x 140 mm	25	ZN-12658-C	M22-2.5 x 50 mm	5
ZN-12764-C	5/8"-11 x 6-1/2"	15	ZN-11464-C	M5-0.80 x 45 mm	100	ZN-12496-C	M10-1.5 x 20 mm	100	ZN-12576-C	M14-2.0 x 150 mm	25	ZN-12660-C	M22-2.5 x 60 mm	5
ZN-12766-C	5/8"-11 x 7"	15	ZN-12430-C	M5-0.80 x 80 mm	100	ZN-11532-C	M10-1.5 x 25 mm	100	ZN-12578-C	M14-2.0 x 160 mm	10	ZN-12662-C	M22-2.5 x 65 mm	5
ZN-12768-C	5/8"-11 x 9"	15	ZN-12432-C	M5-0.80 x 90 mm	100	ZN-11534-C	M10-1.5 x 30 mm	100	ZN-12580-C	M14-2.0 x 180 mm	10	ZN-12664-C	M22-2.5 x 70 mm	5
ZN-12770-C	5/8"-11 x 10"	15	ZN-12434-C	M5-0.80 x 100 mm	100	ZN-11536-C	M10-1.5 x 35 mm	100	ZN-12582-C	M14-2.0 x 200 mm	10	ZN-12666-C	M22-2.5 x 80 mm	5
ZN-12772-C	3/4"-10 x 6-1/2"	10	ZN-12436-C	M5-0.80 x 110 mm	100	ZN-11538-C	M10-1.5 x 40 mm	100	ZN-12584-C	M16-2.0 x 30 mm	25	ZN-12668-C	M22-2.5 x 90 mm	5
ZN-12774-C	3/4"-10 x 7"	10	ZN-12438-C	M5-0.80 x 120 mm	100	ZN-11540-C	M10-1.5 x 45 mm	100	ZN-11570-C	M16-2.0 x 35 mm	25	ZN-12670-C	M22-2.5 x 100 mm	5
ZN-12776-C	3/4"-10 x 8"	10	ZN-12440-C	M5-0.80 x 130 mm	100	ZN-11542-C	M10-1.5 x 50 mm	50	ZN-11572-C	M16-2.0 x 40 mm	25	ZN-12672-C	M22-2.5 x 110 mm	5
ZN-12778-C	3/4"-10 x 9"	10	ZN-12442-C	M5-0.80 x 140 mm	100	ZN-11544-C	M10-1.5 x 55 mm	50	ZN-11574-C	M16-2.0 x 45 mm	25	ZN-12674-C	M22-2.5 x 130 mm	5
ZN-12780-C	3/4"-10 x 10"	10	ZN-12444-C	M5-0.80 x 150 mm	100	ZN-11546-C	M10-1.5 x 60 mm	50	ZN-11576-C	M16-2.0 x 50 mm	25	ZN-12676-C	M22-2.5 x 200 mm	5
ZN-12782-C	3/4"-10 x 11"	10	ZN-12446-C	M6-1.0 x 8 mm	100	ZN-11548-C	M10-1.5 x 65 mm	50	ZN-11578-C	M16-2.0 x 55 mm	25	ZN-12678-C	M24-3.0 x 40 mm	5
ZN-12784-C	3/4"-10 x 12"	10	ZN-11468-C	M6-1.0 x 10 mm	100	ZN-11550-C	M10-1.5 x 70 mm	50	ZN-11580-C	M16-2.0 x 60 mm	25	ZN-11670-C	M24-3.0 x 45 mm	5
ZN-12786-C	7/8"-9 x 2"	5	ZN-11470-C	M6-1.0 x 12 mm	100	ZN-11552-C	M10-1.5 x 75 mm	50	ZN-11582-C	M16-2.0 x 65 mm	25	ZN-11675-C	M24-3.0 x 50 mm	5
ZN-12788-C	7/8"-9 x 8"	5	ZN-11472-C	M6-1.0 x 16 mm	100	ZN-11554-C	M10-1.5 x 80 mm	50	ZN-11584-C	M16-2.0 x 70 mm	25	ZN-11680-C	M24-3.0 x 60 mm	5
ZN-12790-C	1"-8 x 6-1/2"	1	ZN-11474-C	M6-1.0 x 20 mm	100	ZN-11556-C	M10-1.5 x 85 mm	50	ZN-11586-C	M16-2.0 x 75 mm	25	ZN-11685-C	M24-3.0 x 65 mm	1
ZN-12792-C	1"-8 x 7"	1	ZN-11476-C	M6-1.0 x 25 mm	100	ZN-11558-C	M10-1.5 x 90 mm	50	ZN-11588-C	M16-2.0 x 80 mm	20	ZN-12678-C	M24-3.0 x 65 mm	1
ZN-12794-C	1"-8 x 8"	1	ZN-11478-C	M6-1.0 x 30 mm	100	ZN-11560-C	M10-1.5 x 95 mm	50	ZN-11590-C	M16-2.0 x 85 mm	20	ZN-11690-C	M24-3.0 x 70 mm	5
ZN-12796-C	1"-8 x 9"	1	ZN-11480-C	M6-1.0 x 35 mm	100	ZN-11562-C	M10-1.5 x 100 mm	50	ZN-11592-C	M16-2.0 x 90 mm	20	ZN-11695-C	M24-3.0 x 80 mm	5
ZN-12798-C	1"-8 x 10"	1	ZN-11482-C	M6-1.0 x 40 mm	100	ZN-11564-C	M10-1.5 x 110 mm	50	ZN-11594-C	M16-2.0 x 100 mm	20	ZN-11700-C	M24-3.0 x 90 mm	5
ZN-12800-C	1"-8 x 12"	1	ZN-11484-C	M6-1.0 x 45 mm	100	ZN-11566-C	M10-1.5 x 120 mm	50	ZN-11596-C	M16-2.0 x 110 mm	20	ZN-11705-C	M24-3.0 x 100 mm	5
ZN-12802-C	1"-8 x 13"	1	ZN-11486-C	M6-1.0 x 50 mm	100	ZN-11568-C	M10-1.5 x 130 mm	50	ZN-11598-C	M16-2.0 x 120 mm	15	ZN-11710-C	M24-3.0 x 110 mm	5
ZN-12804-C	1-1/4"-7 x 2-1/2"	1	ZN-11488-C	M6-1.0 x 55 mm	100	ZN-11570-C	M10-1.5 x 140 mm	50	ZN-11600-C	M16-2.0 x 130 mm	15	ZN-11715-C	M24-3.0 x 120 mm	5
ZN-12806-C	1-1/4"-7 x 3"	1	ZN-11490-C	M6-1.0 x 60 mm	100	ZN-11572-C	M10-1.5 x 150 mm	50	ZN-11602-C	M16-2.0 x 140 mm	15	ZN-12682-C	M24-3.0 x 150 mm	1
ZN-12808-C	1-1/4"-7 x 3-1/2"	1	ZN-11492-C	M6-1.0 x 65 mm	100	ZN-11574-C	M10-1.5 x 160 mm	50	ZN-11604-C	M16-2.0 x 150 mm	15	ZN-11720-C	M24-3.0 x 160 mm	1
ZN-12810-C	1-1/4"-7 x 4"	1	ZN-11494-C	M6-1.0 x 70 mm	100	ZN-11576-C	M10-1.5 x 170 mm	50	ZN-11606-C	M16-2.0 x 160 mm	15	ZN-11725-C	M24-3.0 x 180 mm	1
ZN-12812-C	1-1/2"-6 x 4"	1	ZN-11496-C	M6-1.0 x 75 mm	100	ZN-11578-C	M10-1.5 x 180 mm	50	ZN-11608-C	M16-2.0 x 170 mm	15	ZN-11730-C	M24-3.0 x 200 mm	5
ZN-12814-C	1-1/2"-6 x 4-1/2"	1	ZN-11498-C	M6-1.0 x 80 mm	100	ZN-11580-C	M10-1.5 x 190 mm	50	ZN-11610-C	M16-2.0 x 180 mm	15	ZN-12684-C	M24-3.0 x 160 mm	1
ZN-12816-C	1-1/2"-6 x 5"	1	ZN-11499-C	M6-1.0 x 85 mm	100	ZN-11582-C	M10-1.5 x 200 mm	50	ZN-11612-C	M16-2.0 x 190 mm	15	ZN-12686-C	M24-3.0 x 180 mm	1
ZN-12818-C	1-1/2"-6 x 6"	1	ZN-11500-C	M6-1.0 x 90 mm	100	ZN-11584-C	M10-1.5 x 210 mm	50	ZN-11614-C	M16-2.0 x 200 mm	15	ZN-12688-C	M24-3.0 x 200 mm	1
ZN-12820-C	1-1/2"-6 x 7"	1	ZN-11502-C	M6-1.0 x 95 mm	100	ZN-11586-C	M10-1.5 x 220 mm	50	ZN-11616-C	M16-2.0 x 210 mm	15	ZN-12690-C	M24-3.0 x 270 mm	1
			ZN-11504-C	M6-1.0 x 100 mm	100	ZN-11588-C	M10-1.5 x 230 mm	50	ZN-11618-C	M16-2.0 x 220 mm	15	ZN-12692-C	M30-3.5 x 70 mm	1
			ZN-11506-C	M6-1.0 x 110 mm	100	ZN-11590-C	M10-1.5 x 240 mm	50	ZN-11620-C	M16-2.0 x 230 mm	15	ZN-12694-C	M30-3.5 x 80 mm	1
			ZN-11508-C	M6-1.0 x 120 mm	100	ZN-11592-C	M10-1.5 x 250 mm	50	ZN-11622-C	M16-2.0 x 240 mm	15	ZN-12696-C	M30-3.5 x 90 mm	1
			ZN-11510-C	M6-1.0 x 130 mm	100	ZN-11594-C	M10-1.5 x 260 mm	50	ZN-11624-C	M16-2.0 x 250 mm	15	ZN-12698-C	M30-3.5 x 100 mm	1
			ZN-11512-C	M6-1.0 x 140 mm	100	ZN-11596-C	M10-1.5 x 270 mm	50	ZN-11626-C	M16-2.0 x 260 mm	15	ZN-12700-C	M30-3.5 x 110 mm	1
			ZN-11514-C	M6-1.0 x 150 mm	100	ZN-11598-C	M10-1.5 x 280 mm	50	ZN-11628-C	M16-2.0 x 270 mm	15	ZN-12702-C	M30-3.5 x 120 mm	1
			ZN-11516-C	M6-1.0 x 160 mm	100	ZN-11600-C	M10-1.5 x 290 mm	50	ZN-11630-C	M16-2.0 x 280 mm	15	ZN-12704-C	M30-3.5 x 130 mm	1
			ZN-11518-C	M6-1.0 x 170 mm	100	ZN-11602-C	M10-1.5 x 300 mm	50	ZN-11632-C	M16-2.0 x 290 mm	15	ZN-12706-C	M30-3.5 x 140 mm	1
			ZN-11520-C	M6-1.0 x 180 mm	100	ZN-11604-C	M10-1.5 x 310 mm	50	ZN-11634-C	M16-2.0 x 300 mm	15	ZN-12708-C	M30-3.5 x 150 mm	1
			ZN-11522-C	M6-1.0 x 190 mm	100	ZN-11606-C	M10-1.5 x 320 mm	50	ZN-11636-C	M16-2.0 x 310 mm	15	ZN-12710-C	M30-3.5 x 160 mm	1
			ZN-11524-C	M6-1.0 x 200 mm	100	ZN-11608-C	M10-1.5 x 330 mm	50	ZN-11638-C	M16-2.0 x 320 mm	15	ZN-12712-C	M30-3.5 x 180 mm	1
			ZN-11526-C	M6-1.0 x 210 mm	100	ZN-11610-C	M10-1.5 x 340 mm	50	ZN-11640-C	M16-2.0 x 330 mm	15	ZN-12714-C	M30-3.5 x 200 mm	1
			ZN-11528-C	M6-1.0 x 220 mm	100	ZN-11612-C	M10-1.5 x 350 mm	50	ZN-11642-C	M16-2.0 x 340 mm	15	ZN-12716-C	M30-3.5 x 220 mm	1
			ZN-11530-C	M6-1.0 x 230 mm	100	ZN-11614-C	M10-1.5 x 360 mm	50	ZN-11644-C	M16-2.0 x 350 mm	15	ZN-12718-C	M30-3.5 x 250 mm	1
			ZN-11532-C	M6-1.0 x 240 mm	100	ZN-11616-C	M10-1.5 x 370 mm	50	ZN-11646-C	M16-2.0 x 360 mm	15	ZN-12720-C	M30-3.5 x 300 mm	1
			ZN-11534-C	M6-1.0 x 250 mm	100	ZN-11618-C	M10-1.5 x 380 mm	50	ZN-11648-C	M16-2.0 x 370 mm	15	ZN-12722-C	M36-4.0 x 80 mm	1
			ZN-11536-C	M6-1.0 x 260 mm	100	ZN-11620-C	M10-1.5 x 390 mm	50	ZN-11650-C	M16-2.0 x 380 mm	15	ZN-12724-C	M36-4.0 x 90 mm	1
			ZN-11538-C	M6-1.0 x 270 mm	100	ZN-11622-C	M10-1.5 x 400 mm	50	ZN-11652-C	M16-2.0 x 390 mm	15	ZN-12726-C	M36-4.0 x 110 mm	1
			ZN-11540-C	M6-1.0 x 280 mm	100	ZN-11624-C	M10-1.5 x 410 mm	50	ZN-11654-C	M16-2.0 x 400 mm	15	ZN-12728-C	M36-4.0 x 120 mm	1
			ZN-11542-C	M6-1.0 x 290 mm	100	ZN-11626-C	M10-1.5 x 420 mm	50	ZN-11656-C	M16-2.0 x 410 mm	15	ZN-12730-C	M36-4.0 x 160 mm	1
			ZN-11544-C	M6-1.0 x 300 mm	100	ZN-11628-C	M10-1.5 x 430 mm	50	ZN-11658-C	M16-2.0 x 420 mm	15	ZN-12732-C	M36-4.0 x 200 mm	1
			ZN-11546-C	M6-1.0 x 310 mm	100	ZN-11630-C	M10-1.5 x 440 mm	50	ZN-11660-C	M16-2.0 x 430 mm	15			
			ZN-11548-C	M6-1.0 x 320 mm	100	ZN-11632-C	M10-1.5 x 450 mm	50						
			ZN-11550-C	M6-1.0 x 330 mm	100	ZN-11634-C	M10-1.5 x 460 mm	50</						

**Tornillo Allen
Cabeza Plana**

DISPONIBLE
En acero
inoxidable
Ver pág. 390



Presentación

Fraccional

Código	Medidas	MIN
ZN-12888-C	4-40 x 1/4"	100
ZN-13010-C	4-40 x 3/8"	100
ZN-13012-C	4-40 x 1/2"	100
ZN-13014-C	4-40 x 5/8"	100
ZN-13016-C	4-40 x 3/4"	100
ZN-13018-C	4-40 x 1"	100
ZN-13020-C	5-40 x 3/8"	100
ZN-13022-C	5-40 x 1/2"	100
ZN-13024-C	5-40 x 5/8"	100
ZN-13026-C	5-40 x 3/4"	100
ZN-13028-C	5-40 x 1"	100
ZN-12890-C	6-32 x 1/4"	100
ZN-13030-C	6-32 x 3/8"	100
ZN-13032-C	6-32 x 1/2"	100
ZN-13034-C	6-32 x 5/8"	100
ZN-13036-C	6-32 x 3/4"	100
ZN-13038-C	6-32 x 1"	100
ZN-13040-C	6-32 x 1-1/4"	100
ZN-13042-C	8-32 x 3/8"	100
ZN-12892-C	8-32 x 1/4"	100
ZN-13044-C	8-32 x 1/2"	100
ZN-13046-C	8-32 x 5/8"	100
ZN-13048-C	8-32 x 3/4"	100
ZN-13050-C	8-32 x 1"	100
ZN-13052-C	8-32 x 1-1/4"	100
ZN-13054-C	8-32 x 1-1/2"	100
ZN-12894-C	10-24 x 1/4"	100
ZN-13056-C	10-24 x 3/8"	100
ZN-13058-C	10-24 x 1/2"	100
ZN-13060-C	10-24 x 5/8"	100
ZN-13062-C	10-24 x 3/4"	100
ZN-13064-C	10-24 x 1-1/4"	100
ZN-13066-C	10-24 x 1-1/2"	100
ZN-13068-C	10-24 x 2"	100
ZN-13070-C	10-24 x 2-1/2"	100
ZN-13072-C	10-32 x 1/2"	100
ZN-13074-C	1/4"-20 x 1/2"	100
ZN-13076-C	1/4"-20 x 5/8"	100
ZN-13078-C	1/4"-20 x 3/4"	100
ZN-13080-C	1/4"-20 x 1"	100
ZN-13082-C	1/4"-20 x 1-1/4"	100
ZN-13084-C	1/4"-20 x 1-1/2"	100
ZN-13086-C	1/4"-20 x 1-3/4"	100
ZN-12896-C	1/4"-20 X 2"	100
ZN-12898-C	1/4"-20 X 3"	100
ZN-13088-C	5/16"-18 x 1/2"	100
ZN-12900-C	5/16"-18 X 5/8"	100
ZN-13090-C	5/16"-18 x 3/4"	100
ZN-13092-C	5/16"-18 x 1"	100
ZN-13094-C	5/16"-18 x 1-1/4"	100
ZN-13096-C	5/16"-18 x 1-1/2"	100
ZN-13098-C	5/16"-18 x 2"	100
ZN-13100-C	5/16"-18 x 2-1/2"	100
ZN-13102-C	5/16"-18 x 3"	100
ZN-12902-C	3/8"-16 x 3/4"	100
ZN-13104-C	3/8"-16 x 1"	100
ZN-13106-C	3/8"-16 x 1-1/4"	100
ZN-13108-C	3/8"-16 x 1-1/2"	100
ZN-13110-C	3/8"-16 x 1-3/4"	100
ZN-13112-C	3/8"-16 x 2"	100
ZN-13114-C	3/8"-16 x 2-1/4"	50
ZN-13116-C	3/8"-16 x 2-1/2"	50
ZN-13118-C	3/8"-16 x 3"	50
ZN-13120-C	3/8"-16 x 3-1/2"	50
ZN-13122-C	3/8"-16 x 4"	50

Código	Medidas	MIN
ZN-12904-C	3/8"-16 x 5"	50
ZN-12906-C	3/8"-16 x 6"	50
ZN-12908-C	7/16"-14 x 1"	100
ZN-12910-C	7/16"-14 x 1-1/4"	100
ZN-12912-C	7/16"-14 x 1-3/4"	100
ZN-12914-C	7/16"-14 x 2"	100
ZN-12916-C	7/16"-14 x 2-1/2"	100
ZN-12918-C	1/2"-13 x 3/4"	50
ZN-13124-C	1/2"-13 x 1"	50
ZN-13126-C	1/2"-13 x 1-1/4"	50
ZN-13128-C	1/2"-13 x 1-1/2"	50
ZN-13130-C	1/2"-13 x 1-3/4"	50
ZN-12920-C	1/2"-13 x 2"	50
ZN-13132-C	1/2"-13 x 2-1/4"	50
ZN-12922-C	1/2"-13 x 2-1/2"	50
ZN-13134-C	1/2"-13 x 3"	50
ZN-13136-C	1/2"-13 x 3-1/2"	25
ZN-12924-C	1/2"-13 x 4"	25
ZN-13138-C	5/8"-11 x 1-1/4"	25
ZN-13140-C	5/8"-11 x 1-1/2"	25
ZN-13142-C	5/8"-11 x 1-3/4"	25
ZN-12926-C	5/8"-11 x 2"	25
ZN-13144-C	5/8"-11 x 2-1/4"	25
ZN-12928-C	5/8"-11 x 2-1/2"	25
ZN-13146-C	5/8"-11 x 3"	25
ZN-13148-C	5/8"-11 x 3-1/2"	25
ZN-13150-C	5/8"-11 x 4"	20
ZN-12930-C	5/8"-11 x 5"	10
ZN-12932-C	3/4"-10 x 1-1/2"	20
ZN-13152-C	3/4"-10 x 2-1/2"	20
ZN-13154-C	3/4"-10 x 3"	20
ZN-13156-C	3/4"-10 x 3-1/2"	10
ZN-13158-C	3/4"-10 x 4"	10

Código	Medidas	MIN
ZN-12836-C	M6-1.0 x 8 mm	100
ZN-13452-C	M6-1 x 10 mm	100
ZN-13454-C	M6-1 x 12 mm	100
ZN-13456-C	M6-1 x 16 mm	100
ZN-13458-C	M6-1 x 20 mm	100
ZN-13460-C	M6-1 x 25 mm	100
ZN-13462-C	M6-1 x 30 mm	100
ZN-13464-C	M6-1 x 35 mm	100
ZN-13466-C	M6-1 x 40 mm	100
ZN-12838-C	M6-1.0 x 45 mm	100
ZN-13468-C	M6-1 x 50 mm	100
ZN-13470-C	M6-1 x 55 mm	100
ZN-13472-C	M6-1 x 60 mm	100
ZN-12840-C	M6-1.0 x 70 mm	100
ZN-12842-C	M8-1.25 x 10 mm	100
ZN-12844-C	M8-1.25 x 12 mm	100
ZN-13474-C	M8-1.25 x 16 mm	100
ZN-13476-C	M8-1.25 x 20 mm	100
ZN-13478-C	M8-1.25 x 25 mm	100
ZN-13480-C	M8-1.25 x 30 mm	100
ZN-13482-C	M8-1.25 x 35 mm	100
ZN-13484-C	M8-1.25 x 40 mm	100
ZN-13486-C	M8-1.25 x 45 mm	100
ZN-13488-C	M8-1.25 x 50 mm	100
ZN-13490-C	M8-1.25 x 55 mm	100
ZN-13492-C	M8-1.25 x 60 mm	100
ZN-12846-C	M8-1.25 x 65 mm	100
ZN-12848-C	M8-1.25 x 70 mm	100
ZN-12850-C	M8-1.25 x 80 mm	100
ZN-12852-C	M10-1.5 x 12 mm	100
ZN-12854-C	M10-1.5 x 16 mm	100
ZN-13494-C	M10-1.5 x 20 mm	100
ZN-12856-C	M10-1.5 x 25 mm	100
ZN-13496-C	M10-1.5 x 30 mm	100
ZN-13498-C	M10-1.5 x 35 mm	100
ZN-13500-C	M10-1.5 x 40 mm	100
ZN-13502-C	M10-1.5 x 45 mm	50
ZN-13504-C	M10-1.5 x 50 mm	50
ZN-13506-C	M10-1.5 x 55 mm	50
ZN-13508-C	M10-1.5 x 60 mm	50
ZN-12858-C	M10-1.5 x 65 mm	50
ZN-12860-C	M10-1.5 x 70 mm	50
ZN-12862-C	M10-1.5 x 80 mm	50
ZN-12864-C	M10-1.5 x 100 mm	50
ZN-12866-C	M12-1.75 x 20 mm	50
ZN-13510-C	M12-1.75 x 25 mm	50
ZN-13512-C	M12-1.75 x 30 mm	50
ZN-13514-C	M12-1.75 x 35 mm	50
ZN-13516-C	M12-1.75 x 40 mm	50
ZN-13518-C	M12-1.75 x 45 mm	50
ZN-13520-C	M12-1.75 x 50 mm	50
ZN-13522-C	M12-1.75 x 55 mm	25
ZN-13524-C	M12-1.75 x 60 mm	25
ZN-13526-C	M12-1.75 x 70 mm	25
ZN-12868-C	M12-1.75 x 80 mm	50
ZN-12870-C	M12-1.75 x 90 mm	25
ZN-12872-C	M12-1.75 x 100 mm	25
ZN-12874-C	M16-2.0 x 30 mm	50
ZN-12876-C	M16-2.0 x 35 mm	50
ZN-12878-C	M16-2.0 x 40 mm	50
ZN-12880-C	M16-2.0 x 45 mm	50
ZN-12882-C	M16-2.0 x 50 mm	50
ZN-12884-C	M16-2.0 x 60 mm	25
ZN-12886-C	M16-2.0 x 80 mm	25
ZN-12888-C	M16-2.0 x 100 mm	25

Métrico

Código	Medidas	MIN
ZN-12822-C	M3-0.50 x 6 mm	100
ZN-12824-C	M3-0.50 x 8 mm	100
ZN-13410-C	M3-0.50 x 10 mm	100
ZN-13412-C	M3-0.50 x 12 mm	100
ZN-13414-C	M3-0.50 x 16 mm	100
ZN-13416-C	M3-0.50 x 20 mm	100
ZN-12826-C	M3-0.50 x 25 mm	100
ZN-12828-C	M3-0.50 x 30 mm	100
ZN-13418-C	M4-0.70 x 8 mm	100
ZN-13420-C	M4-0.70 x 10 mm	100
ZN-13422-C	M4-0.70 x 12 mm	100
ZN-13424-C	M4-0.70 x 16 mm	100
ZN-13426-C	M4-0.70 x 20 mm	100
ZN-13428-C	M4-0.70 x 25 mm	100
ZN-12830-C	M4-0.70 x 30 mm	100
ZN-13430-C	M4-0.70 x 35 mm	100
ZN-12832-C	M4-0.70 x 40 mm	100
ZN-13432-C	M5-0.80 x 8 mm	100
ZN-13434-C	M5-0.80 x 10 mm	100
ZN-13436-C	M5-0.80 x 12 mm	100
ZN-13438-C	M5-0.80 x 16 mm	100
ZN-13440-C	M5-0.80 x 20 mm	100
ZN-13442-C	M5-0.80 x 25 mm	100
ZN-13444-C	M5-0.80 x 30 mm	100
ZN-13446-C	M5-0.80 x 35 mm	100
ZN-13448-C	M5-0.80 x 40 mm	100
ZN-12834-C	M5-0.80 x 45 mm	100
ZN-13450-C	M5-0.80 x 50 mm	100

**Tornillo Allen
Cabeza de Botón**

DISPONIBLE
En acero
inoxidable
Ver pág. 390



Presentación

Fraccional

Código	Medidas	MIN
ZN-12948-C	4-40 x 1/4"	100
ZN-12950-C	4-40 x 3/8"	100
ZN-12946-C	4-40 x 1/2"	100
ZN-15010-C	6-32 x 1/4"	100
ZN-15012-C	6-32 x 3/8"	100
ZN-15014-C	6-32 x 1/2"	100
ZN-15016-C	6-32 x 5/8"	100
ZN-15018-C	6-32 x 3/4"	100
ZN-15020-C	6-32 x 1"	100
ZN-15022-C	8-32 x 3/8"	100
ZN-15024-C	8-32 x 1/2"	100
ZN-15026-C	8-32 x 3/4"	100
ZN-15028-C	8-32 x 1"	100
ZN-12952-C	8-32 x 1-1/4"	100
ZN-12954-C	8-32 x 1-1/2"	100
ZN-12956-C	10-24 x 1/4"	100
ZN-15030-C	10-24 x 3/8"	100
ZN-15032-C	10-24 x 1/2"	100
ZN-15034-C	10-24 x 5/8"	100
ZN-15036-C	10-24 x 3/4"	100
ZN-15038-C	10-24 x 1"	100
ZN-15040-C	10-24 x 1-1/4"	100
ZN-15042-C	10-24 x 1-1/2"	100
ZN-15044-C	10-24 x 2"	100
ZN-15046-C	10-32 x 3/4"	100
ZN-15048-C	1/4"-20 x 3/8"	100
ZN-15050-C	1/4"-20 x 1/2"	100
ZN-15052-C	1/4"-20 x 5/8"	100
ZN-15054-C	1/4"-20 x 3/4"	100
ZN-15056-C	1/4"-20 x 7/8"	100
ZN-15058-C	1/4"-20 x 1"	100
ZN-15060-C	1/4"-20 x 1-1/2"	100
ZN-15062-C	1/4"-20 x 2"	100
ZN-15064-C	5/16"-18 x 1/2"	100
ZN-15066-C	5/16"-18 x 5/8"	100
ZN-15068-C	5/16"-18 x 3/4"	100
ZN-15070-C	5/16"-18 x 1"	100
ZN-15072-C	5/16"-18 x 1-1/4"	100
ZN-15074-C	5/16"-18 x 1-1/2"	100
ZN-15076-C	5/16"-18 x 1-3/4"	100
ZN-15078-C	5/16"-18 x 2"	100
ZN-15080-C	5/16"-18 x 2-1/2"	50
ZN-15082-C	5/16"-18 x 3"	50
ZN-15084-C	3/8"-16 x 1/2"	100
ZN-15086-C	3/8"-16 x 3/4"	100
ZN-15088-C	3/8"-16 x 1"	100
ZN-15090-C	3/8"-16 x 1-1/4"	100
ZN-15092-C	3/8"-16 x 1-1/2"	50
ZN-15094-C	3/8"-16 x 2"	50
ZN-15096-C	3/8"-16 x 2-1/2"	50
ZN-15098-C	3/8"-16 x 3"	50
ZN-15100-C	3/8"-16 x 3-1/2"	25
ZN-15102-C	3/8"-16 x 4"	25
ZN-15104-C	1/2"-13 x 1"	25
ZN-12958-C	1/2"-13 x 1-1/4"	25
ZN-15106-C	1/2"-13 x 1-1/2"	25
ZN-15108-C	1/2"-13 x 2"	25
ZN-12960-C	1/2"-13 x 2-1/2"	25
ZN-15110-C	1/2"-13 x 3"	25
ZN-12962-C	1/2"-13 x 3-1/4"	25
ZN-15112-C	1/2"-13 x 3-1/2"	25
ZN-15114-C	1/2"-13 x 4"	25

Métrico

Código	Medidas	MIN
ZN-15410-C	M4-0.70 x 6 mm	100
ZN-15412-C	M4-0.70 x 8 mm	100
ZN-15420-C	M4-0.70 x 10 mm	100
ZN-15416-C	M4-0.70 x 12 mm	100
ZN-15418-C	M4-0.70 x 16 mm	100
ZN-15422-C	M4-0.70 x 20 mm	100
ZN-12934-C	M4-0.70 x 30 mm	100
ZN-15424-C	M5-0.80 x 8 mm	100
ZN-15426-C	M5-0.80 x 12 mm	100
ZN-15428-C	M5-0.80 x 16 mm	100
ZN-15430-C	M5-0.80 x 20 mm	100
ZN-15432-C	M5-0.80 x 25 mm	100
ZN-15434-C	M5-0.80 x 30 mm	100
ZN-15436-C	M6-1.0 x	



Tornillo Torx Cabeza Plana Punta T-23 Negro



Presentación MIN: 200

Fraccional

Código	Medidas	Código	Medidas
ZN-27210-C	1/4" x 1-1/2"	ZN-27218-C	5/16" x 1-1/2"
ZN-27212-C	1/4" x 2"	ZN-27220-C	5/16" x 2"
ZN-27214-C	1/4" x 2-1/2"	ZN-27222-C	5/16" x 2-1/2"
ZN-27216-C	1/4" x 3"	ZN-27224-C	5/16" x 3"



Tornillo Torx Cabeza Plana Punta T-23 Galvanizado



Presentación MIN: 200

Fraccional

Código	Medidas
ZN-27310-C	1/4" x 1-1/2"
ZN-27312-C	1/4" x 2"
ZN-27314-C	1/4" x 2-1/2"



Tornillo Torx Cabeza Plana F Negro



Presentación MIN: 200

Fraccional

Código	Medidas	Código	Medidas
ZN-27010-C	1/4" x 1"	ZN-27022-C	1/4" x 4"
ZN-27012-C	1/4" x 1-1/4"	ZN-27024-C	1/4" x 5"
ZN-27014-C	1/4" x 1-1/2"	ZN-27026-C	5/16" x 1-1/2"
ZN-27016-C	1/4" x 2"	ZN-27028-C	5/16" x 2"
ZN-27018-C	1/4" x 2-1/2"	ZN-27030-C	5/16" x 2-1/2"
ZN-27020-C	1/4" x 3"	ZN-27032-C	5/16" x 3"



Tornillo Torx Cabeza Plana F Galvanizado



Presentación MIN: 200

Fraccional

Código	Medidas
ZN-27110-C	1/4" x 1-1/2"
ZN-27112-C	1/4" x 2"
ZN-27114-C	1/4" x 2-1/2"
ZN-27116-C	1/4" x 3"



Tornillo Estufa Cabeza Combinada



Presentación MIN: 200

Fraccional

Código	Medidas	Código	Medidas	Código	Medidas
ZN-07010-C	5/32" x 1/2"	ZN-07030-C	3/16" x 1-1/2"	ZN-07050-C	1/4" x 3-1/2"
ZN-07012-C	5/32" x 3/4"	ZN-07032-C	3/16" x 2"	ZN-07052-C	1/4" x 4"
ZN-07014-C	5/32" x 1"	ZN-07034-C	3/16" x 2-1/2"	ZN-07054-C	5/16" x 1"
ZN-07016-C	5/32" x 1-1/4"	ZN-07036-C	3/16" x 3"	ZN-07056-C	5/16" x 1-1/2"
ZN-07018-C	5/32" x 1-1/2"	ZN-07038-C	1/4" x 3/4"	ZN-07058-C	5/16" x 2"
ZN-07020-C	5/32" x 2"	ZN-07040-C	1/4" x 1"	ZN-07060-C	5/16" x 2-1/2"
ZN-07022-C	3/16" x 1/2"	ZN-07042-C	1/4" x 1-1/2"	ZN-07062-C	5/16" x 3"
ZN-07024-C	3/16" x 3/4"	ZN-07044-C	1/4" x 2"	ZN-07064-C	5/16" x 3-1/2"
ZN-07026-C	3/16" x 1"	ZN-07046-C	1/4" x 2-1/2"	ZN-07066-C	5/16" x 4"
ZN-07028-C	3/16" x 1-1/4"	ZN-07048-C	1/4" x 3"		



Tornillo de Guía



Presentación

Fraccional

Código	Medidas	MIN	Código	Medidas	MIN	Código	Medidas	MIN
ZN-17010-C	1/4" (10-24) x 1/4"	50	ZN-17082-C	3/8" (5/16"-18) x 2-3/4"	25	ZN-17310-C	M6 x 8 mm (M5-0.8 TRD)	50
ZN-17012-C	1/4" (10-24) x 5/16"	50	ZN-17084-C	3/8" (5/16"-18) x 3"	25	ZN-17312-C	M6 x 10 mm (M5-0.8 TRD)	50
ZN-17014-C	1/4" (10-24) x 3/8"	50	ZN-17086-C	1/2" (3/8"-16) x 3/8"	20	ZN-17314-C	M6 x 12 mm (M5-0.8 TRD)	50
ZN-17016-C	1/4" (10-24) x 1/2"	50	ZN-17088-C	1/2" (3/8"-16) x 1/2"	20	ZN-17316-C	M6 x 16 mm (M5-0.8 TRD)	50
ZN-17018-C	1/4" (10-24) x 5/8"	50	ZN-17090-C	1/2" (3/8"-16) x 5/8"	20	ZN-17318-C	M6 x 20 mm (M5-0.8 TRD)	50
ZN-17020-C	1/4" (10-24) x 3/4"	50	ZN-17092-C	1/2" (3/8"-16) x 3/4"	20	ZN-17320-C	M6 x 25 mm (M5-0.8 TRD)	50
ZN-17022-C	1/4" (10-24) x 7/8"	50	ZN-17094-C	1/2" (3/8"-16) x 7/8"	20	ZN-17322-C	M6 x 30 mm (M5-0.8 TRD)	50
ZN-17024-C	1/4" (10-24) x 1"	50	ZN-17096-C	1/2" (3/8"-16) x 1"	20	ZN-17324-C	M6 x 35 mm (M5-0.8 TRD)	50
ZN-17026-C	1/4" (10-24) x 1-1/4"	50	ZN-17098-C	1/2" (3/8"-16) x 1-1/4"	20	ZN-17326-C	M6 x 40 mm (M5-0.8 TRD)	50
ZN-17028-C	1/4" (10-24) x 1-1/2"	50	ZN-17100-C	1/2" (3/8"-16) x 1-1/2"	20	ZN-17328-C	M6 x 45 mm (M5-0.8 TRD)	50
ZN-17030-C	1/4" (10-24) x 1-3/4"	50	ZN-17102-C	1/2" (3/8"-16) x 1-3/4"	20	ZN-17330-C	M6 x 50 mm (M5-0.8 TRD)	50
ZN-17032-C	1/4" (10-24) x 2"	50	ZN-17104-C	1/2" (3/8"-16) x 2"	20	ZN-17332-C	M6 x 55 mm (M5-0.8 TRD)	50
ZN-17034-C	5/16" (1/4"-20) x 1/4"	50	ZN-17106-C	1/2" (3/8"-16) x 2-1/4"	20	ZN-17334-C	M6 x 60 mm (M5-0.8 TRD)	50
ZN-17036-C	5/16" (1/4"-20) x 5/16"	50	ZN-17108-C	1/2" (3/8"-16) x 2-1/2"	20	ZN-17336-C	M8 x 10 mm (M6-1.0 TRD)	50
ZN-17038-C	5/16" (1/4"-20) x 3/8"	50	ZN-17110-C	1/2" (3/8"-16) x 2-3/4"	20	ZN-17338-C	M8 x 12 mm (M6-1.0 TRD)	50
ZN-17040-C	5/16" (1/4"-20) x 1/2"	50	ZN-17112-C	1/2" (3/8"-16) x 3"	20	ZN-17340-C	M8 x 16 mm (M6-1.0 TRD)	50
ZN-17042-C	5/16" (1/4"-20) x 5/8"	50	ZN-17114-C	1/2" (3/8"-16) x 3-1/4"	20	ZN-17342-C	M8 x 20 mm (M6-1.0 TRD)	50
ZN-17044-C	5/16" (1/4"-20) x 3/4"	50	ZN-17116-C	1/2" (3/8"-16) x 3-1/2"	20	ZN-17344-C	M8 x 25 mm (M6-1.0 TRD)	50
ZN-17046-C	5/16" (1/4"-20) x 1"	50	ZN-17118-C	1/2" (3/8"-16) x 3-3/4"	20	ZN-17346-C	M8 x 30 mm (M6-1.0 TRD)	50
ZN-17048-C	5/16" (1/4"-20) x 1-1/4"	50	ZN-17120-C	1/2" (3/8"-16) x 4"	20	ZN-17348-C	M8 x 35 mm (M6-1.0 TRD)	50
ZN-17050-C	5/16" (1/4"-20) x 1-1/2"	50	ZN-17122-C	5/8" (1/2"-13) x 1/2"	15	ZN-17350-C	M8 x 40 mm (M6-1.0 TRD)	50
ZN-17052-C	5/16" (1/4"-20) x 1-3/4"	50	ZN-17124-C	5/8" (1/2"-13) x 5/8"	15	ZN-17352-C	M8 x 45 mm (M6-1.0 TRD)	50
ZN-17054-C	5/16" (1/4"-20) x 2"	50	ZN-17126-C	5/8" (1/2"-13) x 7/8"	15	ZN-17354-C	M8 x 50 mm (M6-1.0 TRD)	50
ZN-17056-C	5/16" (1/4"-20) x 2-1/2"	50	ZN-17128-C	5/8" (1/2"-13) x 1"	15	ZN-17356-C	M8 x 55 mm (M6-1.0 TRD)	50
ZN-17058-C	3/8" (5/16"-18) x 3/8"	25	ZN-17130-C	5/8" (1/2"-13) x 1-1/4"	15	ZN-17358-C	M8 x 60 mm (M6-1.0 TRD)	50
ZN-17060-C	3/8" (5/16"-18) x 1/2"	25	ZN-17132-C	5/8" (1/2"-13) x 1-1/2"	15	ZN-17360-C	M10 x 10 mm (M8-1.25 TRD)	25
ZN-17062-C	3/8" (5/16"-18) x 5/8"	25	ZN-17134-C	5/8" (1/2"-13) x 1-3/4"	15	ZN-17362-C	M10 x 12 mm (M8-1.25 TRD)	25
ZN-17064-C	3/8" (5/16"-18) x 3/4"	25	ZN-17136-C	5/8" (1/2"-13) x 2"	15	ZN-17364-C	M10 x 16 mm (M8-1.25 TRD)	25
ZN-17066-C	3/8" (5/16"-18) x 7/8"	25	ZN-17138-C	5/8" (1/2"-13) x 2-1/4"	15	ZN-17366-C	M10 x 25 mm (M8-1.25 TRD)	25
ZN-17068-C	3/8" (5/16"-18) x 1"	25	ZN-17140-C	5/8" (1/2"-13) x 2-1/2"	15	ZN-17368-C	M10 x 30 mm (M8-1.25 TRD)	25
ZN-17070-C	3/8" (5/16"-18) x 1-1/4"	25	ZN-17142-C	5/8" (1/2"-13) x 2-3/4"	15	ZN-17370-C	M10 x 35 mm (M8-1.25 TRD)	25
ZN-17072-C	3/8" (5/16"-18) x 1-1/2"	25	ZN-17144-C	5/8" (1/2"-13) x 3"	15	ZN-17372-C	M10 x 40 mm (M8-1.25 TRD)	25
ZN-17074-C	3/8" (5/16"-18) x 1-3/4"	25	ZN-17146-C	5/8" (1/2"-13) x 3-1/4"	15	ZN-17374-C	M10 x 45 mm (M8-1.25 TRD)	25
ZN-17076-C	3/8" (5/16"-18) x 2"	25	ZN-17148-C	5/8" (1/2"-13) x 3-1/2"	15	ZN-17376-C	M10 x 50 mm (M8-1.25 TRD)	25
ZN-17078-C	3/8" (5/16"-18) x 2-1/2"	25	ZN-17150-C	5/8" (1/2"-13) x 3-3/4"	15	ZN-17378-C	M10 x 55 mm (M8-1.25 TRD)	25
ZN-17080-C	3/8" (5/16"-18) x 2-1/2"	25	ZN-17152-C	5/8" (1/2"-13) x 4"	15	ZN-17380-C	M10 x 60 mm (M8-1.25 TRD)	25
			ZN-17154-C	5/8" (1/2"-13) x 3-3/4"	15	ZN-17382-C	M10 x 70 mm (M8-1.25 TRD)	25
			ZN-17156-C	5/8" (1/2"-13) x 4"	15	ZN-17384-C	M10 x 75 mm (M8-1.25 TRD)	25
						ZN-17422-C	M20 x 20 mm (M16-2.0 TRD)	10
						ZN-17424-C	M20 x 30 mm (M16-2.0 TRD)	10
						ZN-17426-C	M20 x 35 mm (M16-2.0 TRD)	10
						ZN-17428-C	M20 x 40 mm (M16-2.0 TRD)	10
						ZN-17430-C	M20 x 45 mm (M16-2.0 TRD)	10
						ZN-17432-C	M20 x 50 mm (M16-2.0 TRD)	10
						ZN-17434-C	M20 x 55 mm (M16-2.0 TRD)	10
						ZN-17436-C	M20 x 60 mm (M16-2.0 TRD)	10
						ZN-17438-C	M20 x 65 mm (M16-2.0 TRD)	10
						ZN-17440-C	M20 x 70 mm (M16-2.0 TRD)	10
						ZN-17442-C	M20 x 75 mm (M16-2.0 TRD)	10
						ZN-17444-C	M20 x 80 mm (M16-2.0 TRD)	10
						ZN-17446-C	M20 x 85 mm (M16-2.0 TRD)	10
						ZN-17448-C	M20 x 90 mm (M16-2.0 TRD)	10
						ZN-17450-C	M20 x 95 mm (M16-2.0 TRD)	10
						ZN-17452-C	M20 x 100 mm (M16-2.0 TRD)	10

Opresor Allen

DISPONIBLE
En acero
inoxidable
Ver pág. 390



Fraccional

Código	Medidas	MIN	Código	Medidas	MIN
ZE-00996-C	4-40 x 1/2"	250	ZE-01078-C	5/16"-18 x 1/4"	100
ZE-01010-C	5-40 x 1/8"	250	ZE-01080-C	5/16"-18 x 5/16"	100
ZE-01012-C	5-40 x 3/16"	250	ZE-01082-C	5/16"-18 x 3/8"	100
ZE-01014-C	5-40 x 1/4"	250	ZE-01084-C	5/16"-18 x 1/2"	100
ZE-01016-C	5-40 x 5/16"	250	ZE-01086-C	5/16"-18 x 5/8"	100
ZE-01018-C	5-40 x 3/8"	250	ZE-01088-C	5/16"-18 x 3/4"	100
ZE-01020-C	5-40 x 1/2"	250	ZE-01090-C	5/16"-18 x 1"	100
ZE-01022-C	6-32 x 1/8"	250	ZE-01092-C	5/16"-18 x 1-1/4"	100
ZE-01024-C	6-32 x 3/16"	250	ZE-01094-C	3/8"-16 x 5/16"	100
ZE-01026-C	6-32 x 1/4"	250	ZE-01096-C	3/8"-16 x 3/8"	100
ZE-01028-C	6-32 x 5/16"	250	ZE-01098-C	3/8"-16 x 1/2"	100
ZE-01030-C	6-32 x 3/8"	250	ZE-01100-C	3/8"-16 x 5/8"	100
ZE-01032-C	6-32 x 1/2"	250	ZE-01102-C	3/8"-16 x 3/4"	100
ZE-01034-C	8-32 x 1/8"	250	ZE-01104-C	3/8"-16 x 1"	50
ZE-01036-C	8-32 x 3/16"	250	ZE-01106-C	3/8"-16 x 1-1/4"	50
ZE-01038-C	8-32 x 1/4"	250	ZE-01108-C	3/8"-16 x 1-1/2"	50
ZE-01040-C	8-32 x 5/16"	250	ZE-01110-C	3/8"-16 x 2"	50
ZE-01042-C	8-32 x 3/8"	250	ZE-01112-C	1/2"-13 x 1/2"	50
ZE-01044-C	8-32 x 1/2"	250	ZE-01114-C	1/2"-13 x 5/8"	50
ZE-01046-C	10-24 x 3/16"	100	ZE-01116-C	1/2"-13 x 3/4"	50
ZE-01048-C	10-24 x 1/4"	100	ZE-01118-C	1/2"-13 x 1"	50
ZE-01050-C	10-24 x 5/16"	100	ZE-01120-C	1/2"-13 x 1-1/4"	50
ZE-01052-C	10-24 x 3/8"	100	ZE-01122-C	1/2"-13 x 1 1/2"	50
ZE-01054-C	10-24 x 1/2"	100	ZE-01124-C	1/2"-13 x 2"	50
ZE-01056-C	10-24 x 5/8"	100	ZE-01126-C	5/8"-11 x 5/8"	25
ZE-01058-C	10-24 x 3/4"	100	ZE-01128-C	5/8"-11 x 3/4"	25
ZE-01060-C	10-24 x 1"	100	ZE-01130-C	5/8"-11 x 1"	25
ZE-01062-C	1/4"-20 x 3/16"	100	ZE-01132-C	5/8"-11 x 1-1/4"	25
ZE-01064-C	1/4"-20 x 1/4"	100	ZE-01134-C	5/8"-11 x 1 1/2"	25
ZE-01066-C	1/4"-20 x 5/16"	100	ZE-01136-C	5/8"-11 x 2"	25
ZE-01068-C	1/4"-20 x 3/8"	100	ZE-01138-C	3/4"-10 x 3/4"	25
ZE-01070-C	1/4"-20 x 1/2"	100	ZE-01140-C	3/4"-10 x 1"	25
ZE-01072-C	1/4"-20 x 5/8"	100	ZE-01142-C	3/4"-10 x 1-1/4"	25
ZE-01074-C	1/4"-20 x 3/4"	100	ZE-01144-C	3/4"-10 x 1-1/2"	25
ZE-01076-C	1/4"-20 x 1"	100	ZE-01146-C	3/4"-10 x 2"	25



Métrico

Código	Medidas	MIN
ZE-03010-C	M4-0.7 x 10 mm	250
ZE-03012-C	M5-0.8 x 6 mm	250
ZE-03014-C	M5-0.8 x 8 mm	250
ZE-03016-C	M5-0.8 x 10 mm	100
ZE-03018-C	M6-1.0 x 10 mm	100
ZE-03020-C	M6-1.0 x 12 mm	100
ZE-03022-C	M6-1.0 x 16 mm	100
ZE-03024-C	M6-1.0 x 20 mm	100
ZE-03026-C	M8-1.25 x 12 mm	100
ZE-03028-C	M8-1.25 x 16 mm	100
ZE-03030-C	M10-1.50 x 10 mm	100
ZE-03032-C	M10-1.50 x 12 mm	100
ZE-03034-C	M10-1.50 x 16 mm	100
ZE-03036-C	M10-1.50 x 20 mm	100
ZE-03038-C	M10-1.50 x 25 mm	100
ZE-03040-C	M12-1.75 x 12 mm	100
ZE-03042-C	M12-1.75 x 16 mm	100
ZE-03044-C	M12-1.75 x 20 mm	100
ZE-03046-C	M12-1.75 x 25 mm	100

Tapón NPT Allen

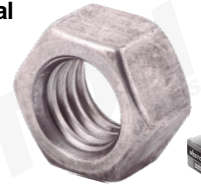


Fraccional

Código	Medidas	MIN	Código	Medidas	MIN
ZE-05010	1/16"-27 x 8"	100	ZE-05016	3/8"-18 x 12"	50
ZE-05012	1/8"-27 x 8"	100	ZE-05018	1/2"-14 x 16"	25
ZE-05014	1/4"-18 x 12"	50			

Presentación

Tuerca Hexagonal Liviana

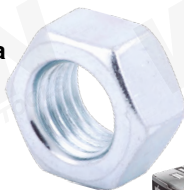


Fraccional

Código	Medida	MIN	Código	Medida	MIN
ZK-09010-C	10-24	2000	ZK-09028-C	7/8"-9	25
ZK-09012-C	1/4"-20	1000	ZK-09030-C	1"-8	25
ZK-09014-C	5/16"-18	500	ZK-09032-C	1-1/8"-7	20
ZK-09016-C	3/8"-16	500	ZK-09034-C	1-1/4"-7	20
ZK-09018-C	7/16"-14	300	ZK-09036-C	1-3/8"-6	15
ZK-09020-C	1/2"-13	200	ZK-09038-C	1-1/2"-6	10
ZK-09022-C	9/16"-12	150	ZK-09040-C	1-3/4"-5	5
ZK-09024-C	5/8"-11	100	ZK-09042-C	2"-4.5	10
ZK-09026-C	3/4"-10	50			

Presentación

Tuerca Hexagonal Liviana Galvanizada



Fraccional

Código	Medida	MIN	Código	Medida	MIN
ZK-07010-C	10-24	2000	ZK-07026-C	3/4"-10	50
ZK-07012-C	1/4"-20	1000	ZK-07028-C	7/8"-9	25
ZK-07014-C	5/16"-18	500	ZK-07030-C	1"-8	25
ZK-07016-C	3/8"-16	500	ZK-07032-C	1-1/8"-7	20
ZK-07018-C	7/16"-14	300	ZK-07034-C	1-1/4"-7	20
ZK-07020-C	1/2"-13	200	ZK-07036-C	1-3/8"-6	15
ZK-07022-C	9/16"-12	150	ZK-07038-C	1-1/2"-6	10
ZK-07024-C	5/8"-11	100			

Presentación

Tuerca Hexagonal Liviana Fina

Rosca fina



Fraccional

Código	Medida	MIN	Código	Medida	MIN
ZK-09110-C	1/4"-28	1000	ZK-09122-C	5/8"-18	100
ZK-09112-C	5/16"-24	500	ZK-09124-C	3/4"-16	50
ZK-09114-C	3/8"-24	500	ZK-09126-C	7/8"-14	25
ZK-09116-C	7/16"-20	300	ZK-09128-C	1"-14	25
ZK-09118-C	1/2"-20	200	ZK-09130-C	1-1/4"-12	20
ZK-09120-C	9/16"-18	150			

Presentación

Tuerca Hexagonal Liviana Fina Galvanizada

Rosca fina



Fraccional

Código	Medida	MIN
ZK-07110-C	5/8"-18	100
ZK-07112-C	3/4"-16	50
ZK-07114-C	1"-14	25

Presentación

Tuerca Hexagonal Grado 5 Negra



Fraccional

Código	Medida	MIN	Código	Medida	MIN
ZK-13010-C	1/4"-20	1000	ZK-13022-C	5/8"-11	100
ZK-13012-C	5/16"-18	500	ZK-13024-C	3/4"-10	50
ZK-13014-C	3/8"-16	500	ZK-13026-C	7/8"-9	25
ZK-13016-C	7/16"-14	300	ZK-13028-C	1"-8	25
ZK-13018-C	1/2"-13	200	ZK-13030-C	1-1/8"-7	20
ZK-13020-C	9/16"-12	150	ZK-13032-C	1-1/4"-7	20

Presentación

Tuerca Hexagonal Grado 8 Negra



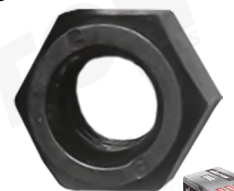
Fraccional

Código	Medida	MIN	Código	Medida	MIN
ZK-15010-C	1/4"-20	1000	ZK-15022-C	3/4"-10	100
ZK-15012-C	5/16"-18	500	ZK-15024-C	7/8"-9	50
ZK-15014-C	3/8"-16	500	ZK-15026-C	1"-8	25
ZK-15016-C	7/16"-14	300	ZK-15028-C	1-1/8"-7	25
ZK-15018-C	1/2"-13	200	ZK-15030-C	1-1/4"	20
ZK-15020-C	5/8"-11	150	ZK-15032-C	1-1/2"	20

Presentación

Tuerca Hexagonal Grado 8 Fina Negra

Fabricada en acero al carbón
Acabado pavonado
Rosca fina
DIN934



Métrica

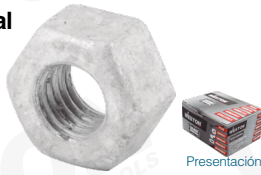
Código	Medida	MIN	Código	Medida	MIN
ZK-18014-C	M6-0.75	12000	ZK-18024-C	M16-1.5	800
ZK-18016-C	M8-1	5000	ZK-18026-C	M18-1.5	600
ZK-18018-C	M10-1	2500	ZK-18028-C	M20-1.5	450
ZK-18020-C	M12-1.25	1600	ZK-18032-C	M24-2	250
ZK-18022-C	M14-1.5	1100			

Presentación





Tuerca Hexagonal Grado 2H GIC



Fraccional

Código	Medida	MIN	Código	Medida	MIN
ZK-11010-C	1/2"-13	200	ZK-11030-C	1-3/4"-8	10
ZK-11012-C	5/8"-11	100	ZK-11032-C	1-7/8"-8	5
ZK-11014-C	3/4"-10	50	ZK-11034-C	2"-8	5
ZK-11016-C	7/8"-9	30	ZK-11036-C	2"-1/4-4.5	5
ZK-11018-C	1"-8	25	ZK-11038-C	2-1/4"-8	5
ZK-11020-C	1-1/8"-8	25	ZK-11040-C	2-1/2"-8	5
ZK-11022-C	1-1/4"-8	20	ZK-11042-C	2-3/4"-8	5
ZK-11024-C	1-3/8"-8	20	ZK-11044-C	3"-8	5
ZK-11026-C	1-1/2"-8	10	ZK-11046-C	3-1/2"-8	1
ZK-11028-C	1-5/8"-8	10	ZK-11048-C	4"-8	1



Tuerca Hexagonal Grado 2H Negra

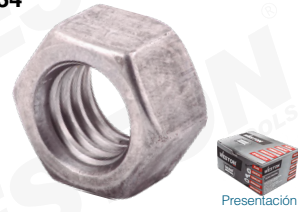


Fraccional

Código	Medida	MIN	Código	Medida	MIN
ZK-11210-C	1/2"-13	200	ZK-11228-C	1-5/8"-8	10
ZK-11212-C	5/8"-11	100	ZK-11230-C	1-3/4"-8	10
ZK-11214-C	3/4"-10	50	ZK-11232-C	1-7/8"-8	5
ZK-11216-C	7/8"-9	30	ZK-11234-C	2"-8	5
ZK-11218-C	1"-8	25	ZK-11236-C	2-1/4"-8	5
ZK-11220-C	1-1/8"-8	25	ZK-11238-C	2-1/2"-8	5
ZK-11221-C	1-1/4"-7	20	ZK-11240-C	2-3/4"-8	5
ZK-11222-C	1-1/4"-8	20	ZK-11242-C	3"-8	5
ZK-11224-C	1-3/8"-8	20	ZK-11244-C	3-1/2"-8	1
ZK-11225-C	1-1/2"-6	10	ZK-11246-C	4"-8	1
ZK-11226-C	1-1/2"-8	10			



Tuerca Hexagonal Clase 8 DIN 934



Métrica

Código	Medida	MIN	Código	Medida	MIN
ZK-17010-C	M4-0.7	1000	ZK-17022-C	M14-2.0	50
ZK-17012-C	M5-0.8	500	ZK-17024-C	M16-2.0	50
ZK-17014-C	M6-1.0	500	ZK-17026-C	M18-2.5	25
ZK-17016-C	M8-1.25	300	ZK-17028-C	M20-2.5	25
ZK-17018-C	M10-1.5	200	ZK-17030-C	M22-2.5	20
ZK-17020-C	M12-1.75	150	ZK-17032-C	M24-3.0	20



Tuerca Hexagonal Clase 8 DIN 934 Galvanizada



Fraccional

Código	Medida	MIN	Código	Medida	MIN
ZK-19010-C	M4-0.7	1000	ZK-19022-C	M14-2.0	50
ZK-19012-C	M5-0.8	500	ZK-19024-C	M16-2.0	50
ZK-19014-C	M6-1.0	500	ZK-19026-C	M18-2.5	25
ZK-19016-C	M8-1.25	300	ZK-19028-C	M20-2.5	25
ZK-19018-C	M10-1.5	200	ZK-19030-C	M22-2.5	20
ZK-19020-C	M12-1.75	150	ZK-19032-C	M24-3.0	20



Tuerca de Seguridad Galvanizada

Con inserto de nailon

DISPONIBLE
En acero inoxidable
Ver pág. 391

Fraccional

Código	Medida	MIN	Código	Medida	MIN
ZK-03010-C	10-24	500	ZK-03110-C	M6-1	500
ZK-03012-C	1/4"-20	500	ZK-03112-C	M8-1.25	300
ZK-03014-C	5/16"-18	300	ZK-03114-C	M10-1.5	250
ZK-03016-C	3/8"-16	250	ZK-03116-C	M12-1.75	100
ZK-03018-C	7/16"-14	250	ZK-03118-C	M14-2	100
ZK-03022-C	1/2"-13	100	ZK-03120-C	M16-2	100
ZK-03024-C	9/16"-12	10	ZK-03122-C	M18-2.5	50
ZK-03026-C	5/8"-11	100	ZK-03124-C	M20-2.5	50
ZK-03028-C	3/4"-10	50	ZK-03126-C	M22-2.5	25
ZK-03030-C	7/8"-9	50	ZK-03128-C	M24-3	25
ZK-03032-C	1"-8	25			



Tuerca Hexagonal con Arandela Dentada Galvanizada

DISPONIBLE
En acero inoxidable
Ver pág. 391

Fraccional

Código	Medida	MIN
ZK-05010-C	1/4"-20	500
ZK-05012-C	5/16"-18	500
ZK-05014-C	3/8"-16	250
ZK-05016-C	7/16"-14	200
ZK-05018-C	1/2"-13	200
ZK-05020-C	5/8"-11	100
ZK-05022-C	3/4"-10	100



Tuerca Bellota UNC Galvanizada



Fraccional

Código	Medida	MIN
ZK-23010-C	10-24 UNC	200
ZK-23012-C	1/4"-20 UNC	200
ZK-23014-C	5/16"-18 UNC	100
ZK-23016-C	3/8"-16 UNC	50
ZK-23018-C	1/2"-13 UNC	50



Tuerca Mariposa Galvanizada

DISPONIBLE
En acero inoxidable
Ver pág. 391

Código	Medida	MIN	Código	Medida	MIN
ZK-21010-C	10-24	100	ZK-21016-C	3/8"-16	100
ZK-21012-C	1/4"-20	100	ZK-21018-C	1/2"-13	50
ZK-21014-C	5/16"-18	100			



Tuerca de Cople Galvanizada



Código	Medida	Altura	MIN	Código	Medida	Altura	MIN
ZK-01010-C	10-24	3/4"	100	ZK-01018-C	1/2"-13	1-3/4"	50
ZK-01012-C	1/4"-20	1-3/4"	100	ZK-01020-C	5/8"-11	2-1/8"	50
ZK-01014-C	5/16"-18	1-3/4"	100	ZK-01022-C	3/4"-10	2-1/8"	25
ZK-01016-C	3/8"-16	1-3/4"	100				



Tuerca Strut Galvanizada



Código	Medidas
ZK-25010-C	1/4" x 34.5 x 19 x 6
ZK-25012-C	3/8" x 34.5 x 19 x 7
ZK-25014-C	1/2" x 34.5 x 19 x 9.2

Presentación MIN: 200



Tuerca Tipo "T" con Brida Soldable



Código	Medidas
ZK-27110-C	1/4"-20 x 5/16"

Presentación MIN: 100



Tuerca Tipo "T" con 4 Puntas Galvanizada



Código	Medidas
ZK-27010-C	1/4"-20 x 5/16"

Presentación MIN: 100



Rondana Plana Pulida

Presentación: costal de 25 kg

DISPONIBLE
En acero inoxidable
Ver pág. 391



Fraccional

Código	Medida	Código	Medida
ZP-01014	5/16"	ZP-01028	7/8"
ZP-01018	7/16"	ZP-01032	1-1/8"

Rondana Plana Galvanizada

Cumple con la norma DIN125
Ideal para prevenir el aflojamiento de tornillos

DISPONIBLE
En acero inoxidable
Ver pág. 391



Métrico

Código	Medida	MIN	Código	Medida	MIN
ZP-01004-C	M4	1000	ZP-010012-C	M12	300
ZP-01005-C	M5	1000	ZP-010014-C	M14	300
ZP-01006-C	M6	1000	ZP-010016-C	M16	300
ZP-01008-C	M8	500	ZP-010020-C	M20	100
ZP-010010-C	M10	500	ZP-010024-C	M24	100



Rondana Plana Galvanizada USS

Presentación: caja de 2.5 kg



Fraccional

Código	Medida	Código	Medida
ZP-05010-C	3/16"	ZP-05024-C	3/4"
ZP-05012-C	1/4"	ZP-05026-C	7/8"
ZP-05014-C	5/16"	ZP-05028-C	1"
ZP-05016-C	3/8"	ZP-05030-C	1-1/8"
ZP-05018-C	7/16"	ZP-05032-C	1-1/4"
ZP-05020-C	1/2"	ZP-05034-C	1-3/8"
ZP-05022-C	5/8"	ZP-05036-C	1-1/2"



Rondana Plana Negra



Métrica

Código	Medida	MIN	Código	Medida	MIN
ZP-08004-C	M4	1000	ZP-080012-C	M12	300
ZP-08005-C	M5	1000	ZP-080014-C	M14	300
ZP-08006-C	M6	1000	ZP-080016-C	M16	300
ZP-08008-C	M8	500	ZP-080020-C	M20	100
ZP-080010-C	M10	500	ZP-080024-C	M24	100



Rondana Plana F436 Negra

Cumple con la norma DIN125
Ideal para prevenir el aflojamiento de tornillos



Fraccional

Código	Medida	MIN	Código	Medida	MIN
ZP-07010-C	1/2"	100	ZP-07028-C	1-3/4"	25
ZP-07012-C	5/8"	100	ZP-07030-C	2"	25
ZP-07014-C	3/4"	100	ZP-07032-C	2-1/4"	20
ZP-07016-C	7/8"	100	ZP-07034-C	2-1/2"	20
ZP-07018-C	1"	50	ZP-07036-C	2-3/4"	10
ZP-07020-C	1-1/8"	50	ZP-07038-C	3"	10
ZP-07022-C	1-1/4"	50	ZP-07040-C	3-1/2"	5
ZP-07024-C	1-3/8"	25	ZP-07042-C	4"	5
ZP-07026-C	1-1/2"	25			



Rondana Plana F436 GIC



Fraccional

Código	Medida	MIN	Código	Medida	MIN
ZP-09010-C	1/2"	100	ZP-09028-C	1-3/4"	25
ZP-09012-C	5/8"	100	ZP-09030-C	2"	25
ZP-09014-C	3/4"	100	ZP-09032-C	2-1/4"	20
ZP-09016-C	7/8"	100	ZP-09034-C	2-1/2"	20
ZP-09018-C	1"	50	ZP-09036-C	2-3/4"	10
ZP-09020-C	1-1/8"	50	ZP-09038-C	3"	10
ZP-09022-C	1-1/4"	50	ZP-09040-C	3-1/2"	5
ZP-09024-C	1-3/8"	25	ZP-09042-C	4"	5
ZP-09026-C	1-1/2"	25			



Rondana de Presión Galvanizada

DISPONIBLE
En acero inoxidable
Ver pág. 391



Fraccional

Código	Medida	MIN	Código	Medida	MIN
ZP-11010-C	#10	500	ZP-11104-C	M4	500
ZP-11012-C	1/4"	500	ZP-11105-C	M5	500
ZP-11014-C	5/16"	500	ZP-11106-C	M6	500
ZP-11016-C	3/8"	300	ZP-11108-C	M8	500
ZP-11018-C	7/16"	300	ZP-11110-C	M10	300
ZP-11020-C	1/2"	200	ZP-11112-C	M12	300
ZP-11022-C	5/8"	100	ZP-11114-C	M14	200
ZP-11024-C	3/4"	100	ZP-11116-C	M16	100
ZP-11026-C	7/8"	100	ZP-11120-C	M20	100
ZP-11028-C	1"	50	ZP-11124-C	M24	100
ZP-11030-C	1-1/8"	25			
ZP-11032-C	1-1/4"	25			
ZP-11034-C	1-3/8"	20			
ZP-11036-C	1-1/2"	20			



Rondana de Presión Negra



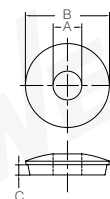
Fraccional

Código	Medida	MIN	Código	Medida	MIN
ZP-13010-C	#10	500	ZP-13104-C	M4	500
ZP-13012-C	1/4"	500	ZP-13105-C	M5	500
ZP-13014-C	5/16"	500	ZP-13106-C	M6	500
ZP-13016-C	3/8"	300	ZP-13108-C	M8	500
ZP-13018-C	7/16"	300	ZP-13110-C	M10	300
ZP-13020-C	1/2"	200	ZP-13112-C	M12	300
ZP-13022-C	5/8"	100	ZP-13114-C	M14	200
ZP-13024-C	3/4"	100	ZP-13116-C	M16	100
ZP-13026-C	7/8"	100	ZP-13120-C	M20	100
ZP-13028-C	1"	50	ZP-13124-C	M24	100
ZP-13030-C	1-1/8"	25			
ZP-13032-C	1-1/4"	25			
ZP-13034-C	1-3/8"	20			
ZP-13036-C	1-1/2"	20			



Rondana Selladora EPDM con Neopreno

Para pija punta de broca



Código	ØInt. (A)	ØExt. (B)	Grosor de rondana (C)	Grosor de neopreno (D)
ZP-15010-C	6.3 mm	16 mm	2±0.2 mm	0.5±1 mm



Pija Hexagonal Punta de Broca Galvanizada

Sin rondana

*Venta de caja MAS (completa) a granel

DISPONIBLE
En acero inoxidable
Ver pág. 391



Código	Medidas	MIN	MAS
PI-01001	#8 x 1/2"	100	12000
*PI-01001-G	#8 x 1/2"	-	15000
PI-01005	#8 x 3/4"	700	8400
*PI-01005-G	#8 x 3/4"	-	12000
PI-01010	#10 x 3/4"	600	7200
*PI-01010-G	#10 x 3/4"	-	8500
PI-01015	#10 x 1"	400	4800
PI-01020	#12 x 3/4"	400	6000
PI-01025	#14 x 3/4"	400	4000
*PI-01025-G	#14 x 3/4"	-	5000
PI-01030	#14 x 1"	400	3200
*PI-01030-G	#14 x 1"	-	4200
PI-01035	#14 x 1-1/4"	300	2400
*PI-01035-G	#14 x 1-1/4"	-	3500
PI-01040	#14 x 1-1/2"	400	3200
PI-01045	#14 x 2"	300	2400
PI-01050	#14 x 3"	200	1600



Pija Cabeza Combinada Galvanizada para Lámina



Código	Medidas	MIN	MAS
PI-14001	#8x3/8"	1000	16000
PI-14005	#8 x 1/2"	1000	16000
PI-14010	#8 x 3/4"	1000	12000
PI-15001	#8 x 3/4" LATÓN	1000	1200
PI-14015	#8 x 1"	1000	1200
PI-15005	#8 x 1" LATÓN	1000	12000
PI-14020	#8 x 1-1/4"	1000	12000
PI-14025	#8 x 1-1/2"	800	9600
PI-14030	#8 x 2"	500	6000
PI-14035	#8 x 2-1/2"	500	6000
PI-14040	#8 x 3"	400	4800
PI-14045	#10 x 1/2"	1000	12000
PI-14050	#10 x 3/4"	1000	12000
PI-14055	#10 x 1"	800	9600
PI-14060	#10 x 1-1/4"	600	7200
PI-14065	#10 x 1-1/2"	600	7200
PI-14070	#10 x 2"	400	4800
PI-14075	#10 x 2-1/2"	400	4800
PI-14080	#10 x 3"	350	4200
PI-14085	#12 x 1/2"	800	9600
PI-14090	#12 x 3/4"	800	9600
PI-14095	#12 x 1"	500	6000
PI-14100	#12 x 1-1/2"	500	6000
PI-14105	#12 x 2"	300	3600
PI-14110	#12 x 2-1/2"	300	3600
PI-14115	#12 x 3"	200	2400
PI-14120	#14 x 1"	400	4800
PI-14125	#14 x 1-1/2"	300	3600
PI-14130	#14 x 2"	200	2400
PI-14135	#14 x 2-1/2"	200	2400
PI-14140	#14 x 3"	200	2400

Presentación



Presentaciones *

Código	Medidas	MIN	MAS
PI-16001	#8 x 2-3/8"	500	4000
PI-06005	#8 x 3"	300	2400

Presentación



Presentaciones *

Presentación

Presentaciones *

Presentación

Presentaciones *

Presentación

Presentaciones *

Presentación

Presentaciones *

Presentación

Presentaciones *

Presentación

Presentaciones *

Presentación

Presentaciones *

Presentación

Presentaciones *

Presentación

Presentaciones *

Presentación

Presentaciones *

Presentación

Presentaciones *

Presentación

Presentaciones *

Presentación

Presentaciones *

Presentación

Presentaciones *

Presentación

Presentaciones *

Presentación

Presentaciones *

Presentación

Presentaciones *

Presentación

Presentaciones *

Presentación

Presentaciones *

Presentación

Presentaciones *

Presentación

Presentaciones *

Presentación

Presentaciones *

Presentación

Presentaciones *

Presentación

Presentaciones *

Presentación

Presentaciones *

Presentación

Presentaciones *

Presentación

Presentaciones *

Presentación

Presentaciones *

Presentación

Presentaciones *

Presentación

Presentaciones *

Presentación

Presentaciones *

Presentación

Presentaciones *

Presentación

Presentaciones *

Presentación

Presentaciones *

Presentación

Presentaciones *

Presentación

Presentaciones *

Presentación

Presentaciones *

Presentación

Presentaciones *

Presentación

Presentaciones *

Presentación

Presentaciones *

Presentación

Presentaciones *

Presentación

Presentaciones *

Presentación

Presentaciones *

Presentación

Presentaciones *

Presentación

Presentaciones *

Presentación

Presentaciones *

Presentación

Presentaciones *

Presentación

Presentaciones *

Presentación

Presentaciones *

Presentación

Presentaciones *

Presentación

Presentaciones *

Presentación

Presentaciones *

Presentación

Presentaciones *

Presentación

Presentaciones *

Presentación

Presentaciones *

Presentación

Presentaciones *

Presentación

Presentaciones *

Presentación

Presentaciones *

Presentación

Presentaciones *

Presentación

Presentaciones *

Presentación

Presentaciones *

Presentación

Presentaciones *

Presentación

Presentaciones *

Presentación

Presentaciones *

Presentación

Presentaciones *

Presentación

Presentaciones *

Presentación

Presentaciones *

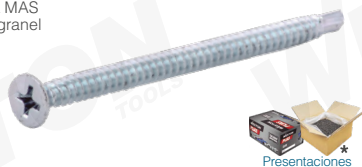
Presentación

Presentaciones *

Presentación

Pija Punta de Broca Galvanizada para Tablaroca

*Venta de caja MAS (completa) a granel

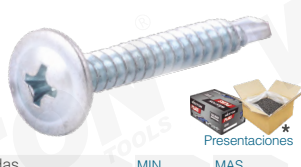


Código	Medidas	MIN	MAS
PI-18001	#6 x 1"	1000	12000
PI-18005	#6 x 1-1/8"	1200	9600
PI-18010	#6 x 1-1/4"	1000	8000
PI-18015	#6 x 1-5/8"	1000	8000
PI-18020	#6 x 2"	1200	5600
*PI-18020-G	#6 x 2"	-	9000
PI-18025	#8 x 3/4"	1200	14400
PI-18030	#8 x 2-3/8"	500	4000
*PI-18030-G	#8 x 2-3/8"	-	6000
PI-18035	#8 x 2-5/8"	400	3200
PI-18040	#8 x 3"	300	2400



Pija K-Lath Phillips Cabeza Extendida Punta de Broca Galvanizada

*Venta de caja MAS (completa) a granel



Código	Medidas	MIN	MAS
PI-10001	#7 x 7/16"	1400	1400
PI-10005	#8 x 1/2"	1000	12000
*PI-10005-G	#8 x 1/2"	-	16000
PI-10010	#8 x 3/4"	800	9600
*PI-10010-G	#8 x 3/4"	-	12000
PI-10015	#8 x 1"	900	7200
*PI-10015-G	#8 x 1"	-	10000
PI-10020	#8 x 1-1/4"	600	4800
PI-10025	#8 x 1-1/2"	700	5600
*PI-10025-G	#8 x 1-1/2"	-	8000
PI-10030	#8 x 2"	500	4000
*PI-10030-G	#8 x 2"	-	6000



Pija K-Lath Phillips Cabeza Extendida Punta de Broca Negra



Código	Medidas	MIN	MAS
PI-11001	#8 x 1/2"	1000	12000
PI-11005	#8 x 3/4"	800	9600
PI-11010	#8 x 1"	900	7200



Pija K-Lath Phillips Cabeza Extendida Punta Tipo AB Negra



Código	Medidas	MIN	MAS
PI-13001	#8 x 1/2"	1000	12000
PI-13005	#8 x 3/4"	1200	9600
PI-13010	#8 x 1"	900	7200



Pija K-Lath Phillips Cabeza Extendida Punta Tipo AB Galvanizada



Código	Medidas	MIN	MAS
PI-12001	#8 x 1/2"	1000	1200
PI-12005	#8 x 3/4"	1200	9600
PI-12010	#8 x 1"	900	7200



Pija Phillips Cabeza Plana Punta Tipo AB Galvanizada



Código	Medidas	MIN	MAS
PI-05001	#8 x 1/2"	1000	16000
PI-05005	#8 x 3/4"	1000	16000
PI-05010	#8 x 1"	1000	12000
PI-05015	#8 x 1-1/4"	800	9600
PI-05020	#8 x 1-1/2"	600	7200
PI-05025	#8 x 2"	500	6000
PI-05030	#8 x 2-1/2"	300	3600
PI-05033	#8 x 3"	300	3600
PI-05035	#10 x 3/4"	800	9600
PI-05040	#10 x 1"	600	7200
PI-05045	#10 x 1-1/4"	600	7200
PI-05050	#10 x 1-1/2"	500	6000
PI-05055	#10 x 2"	300	3600
PI-05060	#10 x 2-1/2"	300	3600
PI-05065	#10 x 3"	200	2400



Pija Phillips con Nibs para Aglomerado



Código	Medidas	MIN	MAS
PI-20001	#6 x 3/4"	2500	30000
PI-20005	#6 x 1"	2000	24000
PI-20010	#6 x 1-1/2"	1000	12000
PI-20015	#6 x 2"	500	6000
PI-20020	#8 x 1"	1000	12000
PI-20025	#8 x 1-1/4"	1000	12000
PI-20030	#8 x 1-1/2"	800	9600
PI-20035	#8 x 2"	500	6000
PI-20040	#8 x 2-1/2"	450	5400
PI-20045	#8 x 3"	400	4800
PI-20050	#10 x 2"	400	4800
PI-20055	#10 x 2-1/2"	300	3600
PI-20060	#10 x 3"	250	3000



Pija Phillips Negra para Madera



Código	Medidas	MIN	MAS
PI-21001	#14 x 2"		
PI-21005	#14 x 2-1/2"		
PI-21010	#14 x 3"		

Presentación MIN: 100 / MAS: 1200



Pija Phillips Galvanizada para Madera



Código	Medidas	MIN	MAS
PI-22001	#8 x 2"	200	2400
PI-22005	#8 x 2-1/2"	200	2400
PI-22010	#10 x 1-1/2"	200	3200
PI-22015	#10 x 2"	200	2400
PI-22020	#10 x 2-1/2"	200	2400
PI-22025	#10 x 3"	200	2400



Pija Cabeza Plana Niquelada para Madera



Código	Medidas	MIN	MAS
PI-23001	#6 x 1/2"	3000	36000
PI-23005	#6 x 5/8"	3000	36000
PI-23010	#6 x 3/4"	2000	24000
PI-23015	#6 x 1-1/2"	1000	12000
PI-23020	#6 x 1-3/4"	700	5600
PI-23025	#8 x 1"	1500	18000



Pija Hexagonal Galvanizada para Madera



Código	Medidas	MIN	Código	Medidas	MIN
ZN-01010-C	1/4" x 1"	100	ZN-01070-C	5/16" x 5"	50
ZN-01012-C	1/4" x 1-1/4"	100	ZN-01072-C	5/16" x 6"	50
ZN-01014-C	1/4" x 1-1/2"	100	ZN-01033-01-C	3/8" x 1-1/4"	100
ZN-01016-C	1/4" x 2"	100	ZN-01034-C	3/8" x 1-1/2"	100
ZN-01018-C	1/4" x 2-1/2"	50	ZN-01036-C	3/8" x 2"	100
ZN-01020-C	1/4" x 3"	50	ZN-01038-C	3/8" x 2-1/2"	50
ZN-01054-C	1/4" x 3-1/2"	100	ZN-01040-C	3/8" x 3"	50
ZN-01056-C	1/4" x 4"	100	ZN-01042-C	3/8" x 3-1/2"	50
ZN-01058-C	1/4" x 4-1/2"	50	ZN-01044-C	3/8" x 4"	50
ZN-01060-C	1/4" x 5"	50	ZN-01074-C	3/8" x 4-1/2"	50
ZN-01062-C	1/4" x 6"	50	ZN-01076-C	3/8" x 5"	50
ZN-01022-C	5/16" x 1"	100	ZN-01078-C	3/8" x 6"	25
ZN-01024-C	5/16" x 1-1/4"	100	ZN-01080-C	1/2" x 2"	100
ZN-01026-C	5/16" x 1-1/2"	100	ZN-01082-C	1/2" x 2-1/2"	50
ZN-01028-C	5/16" x 2"	100	ZN-01046-C	1/2" x 3"	50
ZN-01030-C	5/16" x 2-1/2"	50	ZN-01084-C	1/2" x 3-1/2"	50
ZN-01032-C	5/16" x 3"	50	ZN-01064-C	5/16" x 3-1/2"	50
ZN-01064-C	5/16" x 3-1/2"	50	ZN-01086-C	1/2" x 4-1/2"	50
ZN-01066-C	5/16" x 4"	100	ZN-01050-C	1/2" x 5"	50
ZN-01068-C	5/16" x 4-1/2"	50	ZN-01052-C	1/2" x 6"	50
ZN-01033-C	3/8" x 1"	100			



Pija Framer Phillips Punta de Broca Galvanizada



Código	Medidas	Presentación
PI-07001	#7 x 7/16"	MIN: 1200 / MAS: 14400



Pija Framer Phillips Punta Tipo AB



Código	Medidas	Acabado	Presentación
PI-08001	#7 x 7/16"	Galvanizado	MIN: 1200 / MAS: 14400
PI-09001	#7 x 7/16"	Negro	MIN: 1200 / MAS: 14400





Pija para Fibracemento (Durock)

Para unir tablas de fibracemento



Código	Medidas	MIN	MAS
PI-27001	#8 x 1"	800	6400
PI-27005	#8 x 1-1/4"	700	5600
PI-27010	#8 x 1-1/2"	600	4800



Pija Cabeza Plana para Concreto

Autorroscante, no requiere otro anclaje

Facilita su instalación en superficies como paredes, ofrece resistencia y durabilidad

Con punta para facilitar la instalación y el ahorro de tiempo



Código	Medidas	MIN	MAS
PI-26001	3/16" x 1-1/4"	700	5600
PI-26005	3/16" x 1-3/4"	400	3200
PI-26010	3/16" x 2-1/4"	400	3200
PI-26015	1/4" x 1-1/4"	500	4000
PI-26020	1/4" x 1-3/4"	300	2400
PI-26025	1/4" x 2-1/4"	200	1600
PI-26030	1/4" x 2-3/4"	200	1600



Ancla Arpón



Código	Medidas	MIN	Código	Medidas	MIN
Z-39515	1/4" x 1-3/4"	400	Z-39600	1/2" x 7"	30
Z-39520	1/4" x 2-1/4"	300	Z-39605	5/8" x 3-1/2"	30
Z-39525	1/4" x 3"	250	Z-39607	5/8" x 3-3/4"	30
Z-39527	1/4" x 3-1/4"	200	Z-39610	5/8" x 4-1/2"	25
Z-39529	1/4" x 3-1/2"	200	Z-39612	5/8" x 4-3/4"	20
Z-39530	5/16" x 2"	200	Z-39615	5/8" x 5"	25
Z-39535	5/16" x 2-3/4"	150	Z-39620	5/8" x 6"	20
Z-39540	5/16" x 3-1/2"	120	Z-39625	5/8" x 7"	15
Z-39545	5/16" x 5"	100	Z-39630	5/8" x 8-1/2"	15
Z-39550	3/8" x 2-1/4"	120	Z-39635	3/4" x 4-1/4"	15
Z-39552	3/8" x 2-1/2"	120	Z-39640	3/4" x 4-3/4"	15
Z-39555	3/8" x 2-3/4"	100	Z-39645	3/4" x 5-1/2"	10
Z-39560	3/8" x 3"	100	Z-39650	3/4" x 6-1/4"	10
Z-39565	3/8" x 3-1/2"	100	Z-39655	3/4" x 7"	10
Z-39570	3/8" x 3-3/4"	80	Z-39657	3/4" x 8"	10
Z-39575	3/8" x 5"	70	Z-39660	3/4" x 8-1/2"	10
Z-39580	1/2" x 2-3/4"	60	Z-39665	3/4" x 10"	8
Z-39585	1/2" x 3-3/4"	50	Z-39670	3/4" x 12"	10
Z-39587	1/2" x 4-1/4"	40	Z-39675	1" x 6"	8
Z-39590	1/2" x 4-1/2"	40	Z-39680	1" x 9"	5
Z-39595	1/2" x 5-1/2"	30	Z-39685	1" x 12"	5



Remache de Golpe para Concreto



Código	Medidas	MIN	MAS
Z-39735	1/4" x 1"	800	6400
Z-39740	1/4" x 1-1/2"	700	5600
Z-39745	1/4" x 2"	600	4800

MIN: 200



Pija Hexagonal para Concreto

Autorroscante, no requiere otro anclaje

Facilita su instalación en superficies como paredes, ofrece resistencia y durabilidad

Con punta para facilitar la instalación y el ahorro de tiempo



Código	Medidas	MIN	MAS
PI-24001	3/16" x 1-3/4"	350	2800
PI-24005	1/4" x 1-1/4"	400	3200
PI-24010	1/4" x 2-1/4"	250	2000
PI-24015	1/4" x 2-3/4"	200	1600



Ancla Camisa Reforzada Tropicalizada

Fabricada con camisa corta de grueso calibrado

Cuerdas expuestas Para fijación pesada



Código	Medida	Largo	Rotura (MPa)	Capacidad	MIN
Z-39695	1/4"-20	2-1/4"	390	1,000 kg	100
Z-39701	5/16"-18	2-1/2"	387	1,500 kg	-
Z-39705	3/8"-16	3"	397	2,200 kg	50
Z-39710	1/2"-13	3-1/2"	382	2,800 kg	25
● Z-39802	#10-24	2-7/16"	-	-	350
● Z-39806	5/16"-18	3-5/16"	-	-	100
● Z-39810	3/8"-16	3-13/16"	-	-	50

NUEVO

Remache Sólido de Aluminio Suave

TIPO ESTUFA

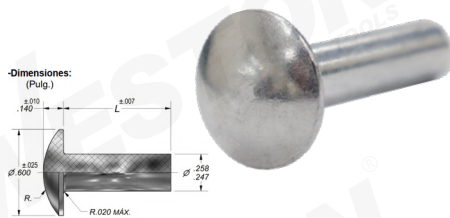
Aleación de Aluminio 1100

Acabado: Natural

Ideal en todo tipo de estructuras metálicas

Resistente a la corrosión

Ideal para ambientes exteriores



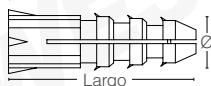
Código	Medidas	Código	Medidas
Z-43000	0.38"	Z-43025	0.50"
Z-43005	0.50"	Z-43030	0.63"
Z-43010	0.63"	Z-43035	0.75"
Z-43015	0.75"	Z-43040	0.89"
Z-43020	1.00"	Z-43045	1.00"



Taquete Plástico

Resiste la corrosión y la humedad

Fabricado en polietileno



Código	Ø	Largo	Color	MIN	INN
Z-39815	3/16"	22 mm	Azul	1000	60000
Z-39820	1/4"	25 mm	Rojo	1000	40000
Z-39825	5/16"	30 mm	Amarillo	1000	20000
Z-39830	3/8"	35 mm	Verde	1000	14000



Pija Hexagonal Ranurada para Concreto

Autorroscante, no requiere otro anclaje

Facilita su instalación en superficies como paredes, ofrece resistencia y durabilidad

Con punta para facilitar la instalación y el ahorro de tiempo



Código	Medidas	MIN	MAS
PI-25001	3/16" x 1-1/4"	500	4000
PI-25005	3/16" x 2-1/4"	300	2400
PI-25010	1/4" x 1-3/4"	250	2000



Ancla para Alambre



Código	Medidas	MIN: 200
Z-39690	1/4" x 2-1/4"	



Taquete Expansor Tropicalizado

Fabricado en zinc Acabado tropicalizado



Código	Medidas	MIN	Código	Medidas	MIN
Z-39715	1/4" x 1-7/8"	100	Z-39725	3/8" x 2-5/8"	50
Z-39720	5/16" x 2"	50	Z-39730	1/2" x 3-1/8"	25



Remache Tipo Pop de Aluminio

Cuerpo de aluminio con cabeza de acero

COMPATIBLE Remachadoras manuales Ver pág. 332



Código	Modelo	Medidas	MIN
Z-42000	AS41	1/8" x 1/16"	1000
Z-42010	AS42	1/8" x 1/8"	1000
Z-42020	AS43	1/8" x 3/16"	1000
Z-42030	AS44	1/8" x 1/4"	1000
Z-42035	AS45	1/8" x 5/16"	1000
Z-42040	AS46	1/8" x 3/8"	1000
Z-42045	AS48	1/8" x 1/2"	1000
Z-42050	AS52	5/32" x 1/8"	1000
Z-42060	AS53	5/32" x 3/16"	1000
Z-42070	AS54	5/32" x 1/4"	1000
Z-42080	AS56	5/32" x 3/8"	1000
Z-42082	AS58	5/32" x 1/2"	500
Z-42084	AS62	3/16" x 1/8"	500
Z-42090	AS64	3/16" x 1/4"	500
Z-42095	AS64LF	3/16" x 1/4"	250
Z-42100	AS66	3/16" x 3/8"	500
Z-42105	AS66LF	3/16" x 3/8"	250
Z-42110	AS68	3/16" x 1/2"	500
Z-42115	AS68LF	3/16" x 1/2"	250
Z-42120	AS610	3/16" x 5/8"	500
Z-42125	AS610LF	3/16" x 5/8"	250
Z-42130	AS612	3/16" x 3/4"	250
Z-42135	AS612LF	3/16" x 3/4"	250
Z-42140	AS84	1/4" x 1/4"	400
Z-42145	AS86	1/4" x 3/8"	350
Z-42150	AS88	1/4" x 1/2"	300

Abrazadera Tipo Uña

Código	Medida
ZC-09016	1-1/4"
ZC-09018	1-1/2"
ZC-09020	2"



Abrazadera Colgante Tipo Pera

Acabado galvanizado

Código	Medida	MIN
ZC-03010	1/2"	-
ZC-03020	2"	90
ZC-03022	3"	40
ZC-03024	4"	25



Abrazadera Tipo "U" con Tuerca Galvanizada

Código	Medidas	MIN
ZC-01010	1/2" x 1/4"	100
ZC-01012	3/4" x 1/4"	100
ZC-01014	1" x 1/4"	15
ZC-01016	1-1/4" x 5/16"	15
ZC-01018	1-1/2" x 5/16"	10
ZC-01020	2" x 3/8"	10
ZC-01022	3" x 1/2"	10
ZC-01024	4" x 1/2"	10



Mordaza Dentada para Varilla 3/8"-16

Puede suspender varillas roscadas de 1/4" y 3/8" simultáneamente

Puede sostener cables de acero para la suspensión de lámparas

Ideal para la suspensión de tuberías de acero y hierro fundido

Acero galvanizado

Código	Medida
ZC-05010	3/8"-16



Armella Galvanizada

Acabado galvanizado



Abierta

Código	Modelo	Dimensiones (mm)					
		A	B	C	D	MIN	
ZC-11010	15x30	2.00	7	23	8	100	
ZC-11012	17x40	2.50	10	30	10	100	
ZC-11014	18x50	3.00	12.5	38.1	10.5	100	
ZC-11016	19x60	3.30	12.5	43.8	15.6	100	
ZC-11018	20x70	4.00	15	48	15	100	
ZC-11020	21x80	4.00	18	55	19	100	
ZC-11022	22x90	4.30	20	59	19	100	
ZC-11024	22x100	4.85	22	70	22	50	
ZC-11026	23x110	5.20	25	80	32	50	
ZC-11028	25x130	6.30	32	105	38	100	
ZC-11030	25x150	6.30	32.3	112	37	100	

Cerrada

Código	Modelo	Dimensiones (mm)					
		A	B	C	D	MIN	
ZC-13010	15x30	2.00	7	23	8	100	
ZC-13012	17x40	2.50	5	26	10	100	
ZC-13014	18x50	3.00	7	34	17	100	
ZC-13016	19x60	3.30	10	37	12	100	
ZC-13018	20x70	4.00	12	45	16	100	
ZC-13020	21x80	4.00	12	51	16	100	
ZC-13022	22x90	4.30	16	55	16	100	
ZC-13024	22x100	4.30	16	60	16	100	
ZC-13026	23x110	4.85	15	65	25	50	
ZC-13028	24x120	6.00	16	73	32	50	
ZC-13030	25x130	6.00	21.1	82.8	38.6	50	
ZC-13032	25x150	6.00	20	92	38	50	
ZC-13035	24x110	5.3	20.3	104	35	100	
ZC-13036	25x160	5.8	25.5	105	45	100	
ZC-13038	26x180	6.5	36.5	125	50	50	
ZC-13039	26x190	6.5	36.5	148	50	50	

Armella con Tuerca Galvanizada

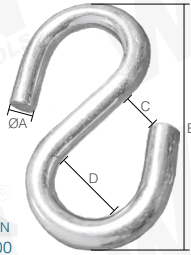
Fraccional

Código	Medidas	MIN
ZC-15010	3/16"-24 x 3"	100
ZC-15012	3/16"-24 x 4"	100
ZC-15014	1/4"-20 x 3"	100
ZC-15016	1/4"-20 x 4"	100
ZC-15022	3/8"-16 x 4"	50

Código	Medidas	MIN
ZC-15024	3/8"-16 x 6"	50
ZC-15026	3/8"-16 x 8"	50
ZC-15028	1/2"-13 x 4"	50
ZC-15032	1/2"-13 x 8"	25



Gancho Tipo "S" Galvanizado



Código	Dimensiones (mm)				
	ØA	B	C	D	MIN
ZC-17010	3	25	3	6	100
ZC-17012	5	40	5	12	100
ZC-17014	6	55	13	15	100
ZC-17016	8	70	15	19	50

Chaveta Galvanizada



Sujetador Mariposa



Código	Medidas	MIN
Z-39500	1/8" x 3"	200
Z-39505	3/16" x 3"	100
Z-39510	1/4" x 3"	100

Identificador de Tuercas y Tornillos

Medidas fraccional y métrico
Revestimiento de zinc y acero
Para medir tuercas, pernos y tornillos



Código	Tipo	Rango	
		Estándar	Métrico
Z-STW-7360	Estándar	1-64 a 5-40	M1.2-0.25 a M3.5-0.35

Extractor de Tornillos AAV

Acero Alta Velocidad



Código	Medida	Código	Medida
ST-5-153-10010	# 1	ST-5-153-10040	# 7
ST-5-153-10015	# 2	ST-5-153-10045	# 8
ST-5-153-10020	# 3	ST-5-153-10070	Juego de 5 piezas #1 - #5
ST-5-153-10025	# 4	ST-5-153-10030	# 5
ST-5-153-10030	# 5	ST-5-153-10080	Juego de 6 piezas #1 - #6
ST-5-153-10035	# 6		

Código	Medidas	MIN
ZC-19010	1/16" x 1/2"	250
ZC-19012	1/16" x 3/4"	250
ZC-19014	1/16" x 1"	250
ZC-19016	1/16" x 1-1/4"	250
ZC-19018	1/16" x 1-1/2"	250
ZC-19020	1/16" x 2"	250
ZC-19022	3/32" x 1/2"	250
ZC-19024	3/32" x 3/4"	250
ZC-19026	3/32" x 1"	250
ZC-19028	3/32" x 1-1/2"	100
ZC-19030	3/32" x 2"	100
ZC-19032	1/8" x 1/2"	100
ZC-19034	1/8" x 3/4"	100
ZC-19036	1/8" x 1"	100
ZC-19038	1/8" x 1-1/4"	100
ZC-19040	1/8" x 1-1/2"	100
ZC-19042	1/8" x 2"	100
ZC-19044	1/8" x 2-1/2"	100
ZC-19046	1/8" x 3"	100
ZC-19048	5/32" x 3/4"	100
ZC-19050	5/32" x 1"	100
ZC-19052	5/32" x 1-1/2"	100
ZC-19054	5/32" x 2"	100
ZC-19056	5/32" x 2-1/2"	100
ZC-19058	5/32" x 3"	100
ZC-19060	3/16" x 3/4"	100
ZC-19062	3/16" x 1"	100
ZC-19064	3/16" x 1-1/4"	100
ZC-19066	3/16" x 1-1/2"	100
ZC-19068	3/16" x 2"	100
ZC-19070	3/16" x 2-1/2"	100
ZC-19072	3/16" x 3"	100
ZC-19074	3/16" x 3-1/2"	100
ZC-19076	1/4" x 1-1/4"	100
ZC-19078	1/4" x 1-1/2"	100
ZC-19080	1/4" x 2"	100
ZC-19082	1/4" x 2-1/2"	100
ZC-19084	1/4" x 3"	100
ZC-19086	1/4" x 3-1/2"	100
ZC-19088	1/4" x 4"	100





Anillo de Retención Interno Tipo HO

DISPONIBLE
En acero inoxidable
Ver pág. 391



Fraccional

Código	Medida	MIN	Código	Medida	MIN
ZB-4940	1/4"	100	ZB-5115	2"	50
ZB-4945	5/16"	100	ZB-5120	2-1/16"	25
ZB-4950	3/8"	100	ZB-5125	2-1/8"	25
ZB-4955	7/16"	100	ZB-5130	2-3/16"	25
ZB-4960	29/64"	100	ZB-5135	2-1/4"	25
ZB-4965	1/2"	100	ZB-5140	2-5/16"	25
ZB-4970	0.512	100	ZB-5145	2-3/8"	25
ZB-4975	9/16"	100	ZB-5150	2-7/16"	25
ZB-4980	5/8"	100	ZB-5155	2-1/2"	25
ZB-4985	11/16"	100	ZB-5160	2-9/16"	25
ZB-4990	3/4"	100	ZB-5165	2-5/8"	25
ZB-4995	0.777	100	ZB-5170	2-11/16"	25
ZB-5000	13/16"	100	ZB-5175	2-3/4"	25
ZB-5005	0.866	100	ZB-5180	2-13/16"	25
ZB-5010	0.901	100	ZB-5185	2-7/8"	25
ZB-5015	15/16"	100	ZB-5190	3"	25
ZB-5020	1"	100	ZB-5195	3-1/16"	10
ZB-5025	1-1/16"	50	ZB-5200	3-1/8"	10
ZB-5030	1-1/8"	50	ZB-5205	3-5/32"	10
ZB-5035	1-3/16"	50	ZB-5210	3-1/4"	10
ZB-5040	1-1/4"	50	ZB-5215	3-11/32"	10
ZB-5045	1-5/16"	50	ZB-5220	3-15/32"	10
ZB-5050	1-3/8"	50	ZB-5225	3-1/2"	10
ZB-5055	1-7/16"	50	ZB-5230	3-9/16"	10
ZB-5060	1.456	50	ZB-5235	3-5/8"	10
ZB-5065	1-1/2"	50	ZB-5240	3-3/4"	10
ZB-5070	1-9/16"	50	ZB-5245	3-7/8"	10
ZB-5075	1-5/8"	50	ZB-5250	3-15/16"	10
ZB-5080	1.653	50	ZB-5255	4"	10
ZB-5085	1-11/16"	50	ZB-5255-05	4-1/4"	10
ZB-5090	1-3/4"	50	ZB-5255-10	4-1/2"	10
ZB-5095	1-13/16"	50	ZB-5255-15	5"	10
ZB-5100	1.85	50	ZB-5255-20	5-1/2"	10
ZB-5105	1-7/8"	50	ZB-5255-25	6"	10
ZB-5110	1-15/16"	50			



Anillo de Retención Externo Tipo E

Fraccional

Código	Medida	Código	Medida	Código	Medida
ZB-4880	1/16"	ZB-4905	3/16"	ZB-4925	1/2"
ZB-4885	3/32"	ZB-4910	1/4"	ZB-4930	5/8"
ZB-4890	1/8"	ZB-4915	3/8"	ZB-4935	3/4"
ZB-4895	9/64"	ZB-4920	7/16"	ZB-4937	7/8"
ZB-4900	5/32"				



Anillo de Retención Externo Tipo C

DISPONIBLE
En acero inoxidable
Ver pág. 391



Fraccional

Código	Medida	MIN	Código	Medida	MIN
ZB-4000	1/4"	100	ZB-4050	11/16"	50
ZB-4005	9/32"	100	ZB-4055	3/4"	50
ZB-4015	5/16"	100	ZB-4060	7/8"	50
ZB-4020	3/8"	100	ZB-4065	1"	50
ZB-4025	13/32"	100	ZB-4070	1-1/8"	25
ZB-4030	7/16"	100	ZB-4075	1-1/4"	25
ZB-4035	1/2"	100	ZB-4080	1-3/8"	25
ZB-4040	9/16"	50	ZB-4085	1-3/4"	25
ZB-4045	5/8"	50	ZB-4090	2"	25



Anillo de Retención Externo Tipo SH

DISPONIBLE
En acero inoxidable
Ver pág. 391



*Material: cobre de berilio



Fraccional

Código	Medida	MIN	Código	Medida	MIN
ZB-5370	1/4"	100	ZB-5550	1-5/8"	50
*ZB-5355	0.197	100	ZB-5555	1-11/16"	50
ZB-5375	0.276	100	ZB-5560	1-3/4"	50
ZB-5380	9/32"	100	ZB-5565	1.772	50
ZB-5385	5/16"	100	ZB-5570	1-13/16"	50
ZB-5390	11/32"	100	ZB-5575	1-7/8"	50
ZB-5395	0.354	100	ZB-5580	1-31/32"	50
*ZB-5340	1/8"	100	ZB-5585	2"	50
ZB-5400	3/8"	100	ZB-5590	2-1/16"	25
ZB-5405	0.394	100	ZB-5595	2-1/8"	25
*ZB-5345	5/32"	100	ZB-5600	2-5/32"	25
*ZB-5360	7/32"	100	ZB-5605	2-1/4"	25
ZB-5410	13/32"	100	ZB-5610	2-5/16"	25
*ZB-5350	3/16"	100	ZB-5615	2-3/8"	25
ZB-5415	7/16"	100	ZB-5620	2-7/16"	25
ZB-5420	15/32"	100	ZB-5625	2-1/2"	25
ZB-5425	1/2"	100	ZB-5630	2.559	25
ZB-5430	0.551	100	ZB-5635	2-5/8"	25
ZB-5435	9/16"	100	ZB-5640	2-11/16"	25
ZB-5440	19/32"	100	ZB-5645	2-3/4"	25
ZB-5445	5/8"	100	ZB-5650	2-7/8"	25
*ZB-5365	15/64"	100	ZB-5655	2-15/16"	25
ZB-5450	43/64"	100	ZB-5660	3"	25
*ZB-5455	11/16"	100	ZB-5665	3-1/16"	10
ZB-5460	3/4"	100	ZB-5670	3-1/8"	10
ZB-5465	25/32"	50	ZB-5675	3-5/32"	10
ZB-5470	13/16"	50	ZB-5680	3-1/4"	10
ZB-5475	0.844	50	ZB-5685	3-11/32"	10
ZB-5480	7/8"	50	ZB-5690	3-7/16"	10
ZB-5485	15/16"	50	ZB-5700	3-1/2"	10
ZB-5490	63/64"	50	ZB-5705	3.543	10
ZB-5495	1"	50	ZB-5710	3-5/8"	10
ZB-5500	1.023	50	ZB-5715	3-11/16"	10
ZB-5505	1-1/16"	50	ZB-5720	3-3/4"	10
ZB-5510	1-1/8"	50	ZB-5725	3-7/8"	10
ZB-5515	1-3/16"	50	ZB-5730	3-15/16"	10
ZB-5520	1-1/4"	50	ZB-5735	4"	10
ZB-5525	1-5/16"	50	ZB-5740	4-1/4"	10
ZB-5530	1-3/8"	50	ZB-5745	4-1/2"	10
ZB-5535	1-7/16"	50	ZB-5750	5"	10
ZB-5540	1-1/2"	50	ZB-5755	5-1/2"	10
ZB-5545	1-9/16"	50	ZB-5760	6"	10



Anillo de Retención Externo Tipo DE

DISPONIBLE
En acero inoxidable
Ver pág. 391



Métrico

Código	Medida	Código	Medidas
ZB-4095	1.2 mm	ZB-4140	8 mm
ZB-4100	1.5 mm	ZB-4145	9 mm
ZB-4105	1.9 mm	ZB-4150	10 mm
ZB-4110	2.3 mm	ZB-4155	12 mm
ZB-4115	3.2 mm	ZB-4160	15 mm
ZB-4120	4 mm	ZB-4165	19 mm
ZB-4125	5 mm	ZB-4170	24 mm
ZB-4130	6 mm	ZB-4175	30 mm
ZB-4135	7 mm		



Anillo de Retención Externo Tipo SE



Fraccional

Código	Medida	MIN	Código	Medida	MIN
ZB-5260	1/16"	100	ZB-5300	7/32"	100
ZB-5265	3/32"	100	ZB-5305	5/16"	100
ZB-5270	0.11	100	ZB-5310	3/8"	100
ZB-5275	1/8"	100	ZB-5315	7/16"	100
ZB-5280	9/64"	100	ZB-5320	3/4"	100
ZB-5285	5/32"	100	ZB-5325	1"	100
ZB-5290	11/64"	100	ZB-5330	1.188	50
ZB-5295	3/16"	100	ZB-5335	1.375	50



Anillo de Retención Interno Tipo DHO



Métrico

Código	Medida	MIN	Código	Medida	MIN
ZB-4180	8 mm	100	ZB-4365	45 mm	50
ZB-4185	9 mm	100	ZB-4370	46 mm	50
ZB-4190	10 mm	100	ZB-4375	47 mm	50
ZB-4195	11 mm	100	ZB-4380	48 mm	50
ZB-4200	12 mm	100	ZB-4385	50 mm	50
ZB-4205	13 mm	100	ZB-4390	51 mm	25
ZB-4210	14 mm	100	ZB-4395	52 mm	25
ZB-4215	15 mm	100	ZB-4400	53 mm	25
ZB-4220	16 mm	100	ZB-4405	54 mm	25
ZB-4225	17 mm	100	ZB-4410	55 mm	25
ZB-4230	18 mm	100	ZB-4415	56 mm	25
ZB-4235	19 mm	100	ZB-4420	57 mm	25
ZB-4240	20 mm	100	ZB-4425	58 mm	25
ZB-4245	21 mm	100	ZB-4430	60 mm	25
ZB-4250	22 mm	100	ZB-4435	62 mm	25
ZB-4255	23 mm	100	ZB-4440	63 mm	25
ZB-4260	24 mm	100	ZB-4445	64 mm	25
ZB-4265	25 mm	100	ZB-4450	65 mm	25
ZB-4270	26 mm	100	ZB-4455	67 mm	25
ZB-4275	27 mm	100	ZB-4460	68 mm	25
ZB-4280	28 mm	100	ZB-4465	70 mm	25
ZB-4285	29 mm	100	ZB-4470	72 mm	25
ZB-4290	30 mm	100	ZB-4475	75 mm	25
ZB-4295	31 mm	50	ZB-4480	76 mm	10
ZB-4300	32 mm	50	ZB-4485	78 mm	10
ZB-4305	33 mm	50	ZB-4490	80 mm	10
ZB-4310	34 mm	50	ZB-4495	81 mm	10
ZB-4315	35 mm	50	ZB-4500	82 mm	10
ZB-4320	36 mm	50	ZB-4505	85 mm	10
ZB-4325	37 mm	50	ZB-4510	88 mm	10
ZB-4330	38 mm	50	ZB-4515	90 mm	10
ZB-4335	39 mm	50	ZB-4520	92 mm	10
ZB-4340	40 mm	50	ZB-4525	95 mm	10
ZB-4345	41 mm	50	ZB-4530	98 mm	10
ZB-4350	42 mm	50	ZB-4535	100 mm	10
ZB-4355	43 mm	50	ZB-4540	102 mm	10
ZB-4360	44 mm	50			



Anillo de Retención Externo Tipo DSH



Métrico

Código	Medida	MIN	Código	Medida	MIN
ZB-4545	3 mm	100	ZB-4715	38 mm	50
ZB-4550	4 mm	100	ZB-4720	39 mm	50
ZB-4555	5 mm	100	ZB-4725	40 mm	50
ZB-4560	6 mm	100	ZB-4730	41 mm	50
ZB-4565	7 mm	100	ZB-4735	42 mm	50
ZB-4570	8 mm	100	ZB-4740	44 mm	50
ZB-4575	9 mm	100	ZB-4745	45 mm	50
ZB-4580	10 mm	100	ZB-4750	46 mm	50
ZB-4585	11 mm	100	ZB-4755	47 mm	50
ZB-4590	12 mm	100	ZB-4760	48 mm	50
ZB-4595	13 mm	100	ZB-4765	50 mm	50
ZB-4600	14 mm	100	ZB-4770	52 mm	25
ZB-4605	15 mm	100	ZB-4775	54 mm	25
ZB-4610	16 mm	100	ZB-4780	55 mm	25
ZB-4615	17 mm	100	ZB-4785	56 mm	25
ZB-4620	18 mm	100	ZB-4790	57 mm	25
ZB-4625	19 mm	100	ZB-4795	58 mm	25
ZB-4630	20 mm	100	ZB-4800	60 mm	25
ZB-4635	21 mm	100	ZB-4805	62 mm	25
ZB-4640	23 mm	100	ZB-4810	63 mm	25
ZB-4645	24 mm	100	ZB-4815	65 mm	25
ZB-4650	25 mm	100	ZB-4820	67 mm	25
ZB-4655	26 mm	100	ZB-4825	68 mm	25
ZB-4660	27 mm	100	ZB-4830	70 mm	25
ZB-4665	28 mm	100	ZB-4835	72 mm	10
ZB-4670	29 mm	100	ZB-4840	75 mm	10
ZB-4675	30 mm	100	ZB-4845	78 mm	10
ZB-4680	31 mm	50	ZB-4850	80 mm	10
ZB-4685	32 mm	50	ZB-4855	82 mm	10
ZB-4690	33 mm	50	ZB-4860	85 mm	10
ZB-4695	34 mm	50	ZB-4865	90 mm	10
ZB-4700	35 mm	50	ZB-4870	95 mm	10
ZB-4705	36 mm	50	ZB-4875	100 mm	10
ZB-4710	37 mm	50			

Juego de Tornillos Phillips Cabeza Plana

Acero al carbón negro

Variación de pequeños tornillos que se utilizan en laptops, tablets y otros equipos electrónicos

- Medidas:
- | | |
|-----------|----------|
| M1.4 - 4 | M1.4 - 8 |
| M1.7 - 4 | M1.7 - 6 |
| M2 - 4 | M2 - 8 |
| M2.5 - 4 | M2.5 - 6 |
| M2.5 - 10 | M3 - 4 |
| M3 - 8 | M3 - 12 |
| M1.4 - 6 | M3 - 16 |
| M1.7 - 5 | M1.7 - 8 |
| M2 - 6 | M2 - 10 |
| M2.5 - 5 | M2.5 - 8 |
| M2.5 - 12 | M3 - 6 |
| M3 - 10 | M3 - 14 |



Estuche práctico con divisiones para mantenerlos organizados



Estuche plástico colgante MIN: 1 / INN: 50

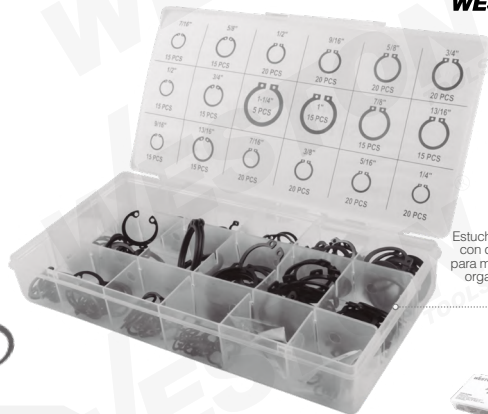
Métrico

Código	Contenido
ZN-33000	30 piezas por medida (720 piezas)

Juego de Anillos de Retención

Incluye:

- | | |
|---------------------|---------------------|
| Externo: | Interno: |
| 20 piezas de 1/4" | 15 piezas de 1/2" |
| 20 piezas de 5/16" | 15 piezas de 9/16" |
| 20 piezas de 3/8" | 15 piezas de 5/8" |
| 20 piezas de 7/16" | 15 piezas de 3/4" |
| 20 piezas de 1/2" | 15 piezas de 13/16" |
| 20 piezas de 9/16" | 15 piezas de 7/8" |
| 20 piezas de 5/8" | 15 piezas de 1" |
| 20 piezas de 3/4" | 5 piezas de 1-1/4" |
| 15 piezas de 13/16" | |
| 15 piezas de 7/8" | |
| 15 piezas de 1" | |
| 5 piezas de 1-1/4" | |



Estuche práctico con divisiones para mantenerlos organizados

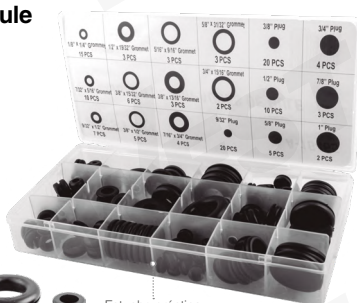


Código	Contenido
A-16430	30 piezas

Juego de Empaques de Hule

Incluye:

- | | |
|---------------------------|--------------------|
| Arandela: | Tapón: |
| 15 piezas de 1/8" x 1/4" | 20 piezas de 9/32" |
| 10 piezas de 7/32" x 1/2" | 20 piezas de 3/8" |
| 7 piezas de 9/32" x 1/2" | 10 piezas de 1/2" |
| 3 piezas de 5/16" x 9/16" | 5 piezas de 5/8" |
| 6 piezas de 3/8" x 15/32" | 4 piezas de 3/4" |
| 5 piezas de 3/8" x 1/2" | 3 piezas de 7/8" |
| 3 piezas de 3/8" x 13/16" | 2 piezas de 1" |
| 4 piezas de 7/16" x 3/4" | |
| 3 piezas de 1/2" x 19/32" | |
| 3 piezas de 5/8" x 11/32" | |
| 2 piezas de 3/4" x 15/16" | |



Estuche práctico con divisiones para mantenerlos organizados



Código	Contenido
A-16465	125 piezas

Juego de Cuñas

Incluye:

- | |
|------------------------------------|
| 4 piezas de 1/8" x 1/8" x 3/4" |
| 4 piezas de 1/8" x 1/8" x 1" |
| 5 piezas de 3/16" x 3/16" x 3/4" |
| 5 piezas de 3/16" x 3/16" x 1" |
| 5 piezas de 3/16" x 3/16" x 1-1/4" |
| 5 piezas de 1/4" x 1/4" x 3/4" |
| 5 piezas de 1/4" x 1/4" x 1-1/2" |
| 5 piezas de 1/4" x 1/4" x 1-1/2" |
| 5 piezas de 5/16" x 5/16" x 1-1/2" |
| 5 piezas de 5/16" x 5/16" x 1-1/4" |
| 5 piezas de 3/8" x 3/8" x 1-1/4" |
| 5 piezas de 3/8" x 3/8" x 1-1/2" |
| 2 piezas de 1/2" x 1/2" x 1-1/2" |



Estuche práctico con divisiones para mantenerlos organizados



Código	Contenido
A-16450	60 piezas

Juego de Cuñas Media Luna

Incluye:

- | |
|--------------------------------------|
| 10 piezas de 1/8" x 13/64" x 33/64" |
| 10 piezas de 1/8" x 1/4" x 5/8" |
| 10 piezas de 5/32" x 19/64" x 3/4" |
| 10 piezas de 5/32" x 1/4" x 5/8" |
| 10 piezas de 5/32" x 13/64" x 33/64" |
| 10 piezas de 13/64" x 19/64" x 3/4" |
| 10 piezas de 13/64" x 23/64" x 7/8" |
| 10 piezas de 15/64" x 23/64" x 7/8" |



Estuche práctico con divisiones para mantenerlos organizados



Código	Contenido
A-16440	80 piezas

Juego de Clips "E"

Incluye:

- | |
|--------------------|
| 30 piezas de 1/16" |
| 30 piezas de 1/8" |
| 40 piezas de 3/16" |
| 50 piezas de 1/4" |
| 50 piezas de 3/8" |
| 40 piezas de 1/2" |
| 20 piezas de 7/8" |
| 20 piezas de 5/4" |
| 20 piezas de 3/4" |



Estuche práctico con divisiones para mantenerlos organizados



Código	Contenido
A-16445	300 piezas



Juego de Chavetas

Incluye:
 150 piezas de 1/16" x 1"
 150 piezas de 3/32" x 1"
 100 piezas de 3/32" x 1-1/2"
 75 piezas de 1/8" x 1-1/4"
 50 piezas de 1/8" x 2"
 30 piezas de 5/32" x 2-1/2"



Estuche práctico con divisiones para mantenerlos organizados

Código Contenido
A-16400 555 piezas

Estuche plástico

Juego de Pernos

Incluye:
 42 pzas. de 3/32" x 1-3/16"
 30 pzas. de 5/64" x 1-5/16"
 25 pzas. de 5/64" x 1-9/16"
 25 pzas. de 7/64" x 1-5/8"
 20 pzas. 9/64" x 1-3/4"
 8 pzas. de 5/32" x 2-15/16"



Estuche práctico con divisiones para mantenerlos organizados

Código Contenido
A-16415 150 piezas

Estuche plástico

Juego Surtido para Taller

Incluye:
Cuña media luna:
 25 piezas de 3/32" x 3/8"
 25 piezas de 3/32" x 1/2"
 25 piezas de 1/8" x 1/2"
 40 piezas de 1/8" x 5/8"
 50 piezas de 5/32" x 5/8"
 25 piezas de 3/16" x 3/4"
Clip E:
 25 piezas de 1/4"
 25 piezas de 3/8"
Perno roll pin:
 20 piezas de 1/8" x 5/8"
 20 piezas de 1/8" x 1"
 20 piezas de 5/32" x 5/8"
 20 piezas de 5/32" x 1"
 20 piezas de 3/16" x 5/8"
 20 piezas de 3/16" x 1"

Anillo de retención externo:
 25 piezas de 3/8"
 25 piezas de 1/2"
 25 piezas de 5/8"
 25 piezas de 3/4"



Estuche práctico con divisiones para mantenerlos organizados

Código Contenido
A-16435 460 piezas

Estuche plástico

Juego de O-Rings



Estuche práctico con divisiones para mantenerlos organizados



Código Tipo Contenido
A-16470 Fraccional 407 piezas
A-16475 Métrico 419 piezas

O-Ring

Disponibles en medidas fraccionales y métricas



Juego de Perno Roll Pin

Incluye:
 10 piezas de 1/16" x 3/16"
 10 piezas de 1/16" x 3/4"
 10 piezas de 1/16" x 5/16"
 10 piezas de 5/32" x 5/8"
 10 piezas de 5/32" x 1"
 10 piezas de 5/32" x 1-1/2"
 10 piezas de 5/64" x 1/4"
 10 piezas de 5/64" x 1/2"
 10 piezas de 5/64" x 1"
 15 piezas de 1/8" x 5/8"
 15 piezas de 1/8" x 1"
 15 piezas de 1/8" x 1-1/4"
 10 piezas de 3/32" x 5/8"
 10 piezas de 3/32" x 1"
 10 piezas de 3/32" x 1-1/4"
 15 piezas de 3/16" x 5/8"
 15 piezas de 3/16" x 1"
 15 piezas de 3/16" x 1-1/4"
 10 piezas de 7/32" x 5/8"
 10 piezas de 7/32" x 1-1/4"
 10 piezas de 7/32" x 1-3/4"
 10 piezas de 1/4" x 5/8"
 10 piezas de 1/4" x 1-1/4"
 10 piezas de 1/4" x 1-3/4"
 10 piezas de 5/16" x 3/4"
 10 piezas de 5/16" x 1-1/2"
 10 piezas de 5/16" x 2"
 5 piezas de 3/8" x 3/4"
 5 piezas de 3/8" x 1-1/2"
 5 piezas de 3/8" x 2"

Estuche práctico con divisiones para mantenerlos organizados



Estuche plástico

Fraccional

MIN: 200

Código	Ø Interior	Ø Exterior	Espesor
● A-16470-070	13/16"	1"	3/32"
● A-16470-090	7/8"	1-1/8"	1/8"
● A-16470-095	15/16"	1-3/16"	1/8"
● A-16470-100	1"	1-1/4"	1/8"

Código Contenido
A-16425 315 piezas

Métrico

Código	Ø Interior	Espesor
● A-16475-060	21 mm	2.50 mm
● A-16475-065	22 mm	2.50 mm
● A-16475-080	22 mm	3.50 mm
● A-16475-085	23.5 mm	3.50 mm
● A-16475-095	26.5 mm	3.50 mm
● A-16475-100	28 mm	3.50 mm
● A-16475-105	30 mm	3.50 mm
● A-16475-110	31 mm	3.50 mm
● A-16475-115	33 mm	3.50 mm
● A-16475-125	36 mm	3.50 mm
● A-16475-130	38 mm	3.50 mm
● A-16475-135	41 mm	3.50 mm
● A-16475-140	44 mm	3.50 mm
● A-16475-145	47 mm	3.50 mm
● A-16475-150	50 mm	3.50 mm

Juego de Terminales Eléctricas

Incluye:
 4 piezas de 12-10 ga terminal anillo 55-5
 4 piezas de 12-10 ga terminal anillo 55-8
 4 piezas de 12-10 ga terminal anillo 55-10
 5 piezas de 12-10 ga conector macho
 5 piezas de 12-10 ga desconector hembra
 12 piezas de 12-10 ga conector empalme
 10 piezas de 16-14 ga terminal anillo 2-6
 10 piezas de 16-14 ga terminal anillo 2-5 L
 10 piezas de 16-14 ga terminal anillo 2-4 L
 10 piezas de 16-14 ga desconector hembra
 10 piezas de 16-14 ga terminal pala 2-4M
 10 piezas de 16-14 ga conector macho 55-5
 18 piezas de 18-14 ga conector empalme
 4 piezas de 18-14 ga conector empalme rápido
 8 piezas de 22-18 ga terminal anillo 1.25-4 L
 4 piezas de 22-18 ga conector empalme rápido
 12 piezas de 22-18 ga conector empalme
 2x10 piezas de 16-14 ga conector bala macho y desconector hembra

Estuche práctico con divisiones para mantenerlos organizados



Estuche plástico

Código Contenido
A-16455 160 piezas

ACERO INOXIDABLE

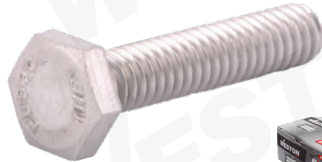
Fabricados con una aleación de acero y cromo que otorga propiedades como: material durable para uso rudo y alta resistencia a la humedad, a la corrosión y a la oxidación.

Ideales para usarse en: exteriores, lugares con alta concentración de humedad, zonas costeras o cuando se busca un acabado estético limpio.



Tornillo Hexagonal Acero Inoxidable

Acero Inoxidable 304



Fraccional

Código	Rosca	Medidas	MIN
ZN-30010-C	RC	1/4"-20 x 1/2"	100
ZN-30012-C	RC	1/4"-20 x 3/4"	100
ZN-30014-C	RC	1/4"-20 x 7/8"	100
ZN-30016-C	RC	1/4"-20 x 1"	100
ZN-30018-C	RC	1/4"-20 x 1-1/4"	100
ZN-30020-C	RC	1/4"-20 x 1-1/2"	100
ZN-30022-C	RC	1/4"-20 x 2"	100
ZN-30024-C	RC	1/4"-20 x 2-1/2"	100
ZN-30026-C	RC	1/4"-20 x 3"	100
ZN-30028-C	RC	1/4"-20 x 3-1/2"	50
ZN-30030-C	RC	1/4"-20 x 4"	50
ZN-30032-C	RC	5/16"-18 x 1/2"	100
ZN-30034-C	RC	5/16"-18 x 3/4"	100
ZN-30036-C	RC	5/16"-18 x 7/8"	100
ZN-30038-C	RC	5/16"-18 x 1"	100
ZN-30040-C	RC	5/16"-18 x 1-1/4"	100
ZN-30042-C	RC	5/16"-18 x 1-1/2"	100
ZN-30044-C	RC	5/16"-18 x 2"	100
ZN-30046-C	RC	5/16"-18 x 2-1/2"	50
ZN-30048-C	RC	5/16"-18 x 3"	50
ZN-30050-C	RC	5/16"-18 x 3-1/2"	50
ZN-30052-C	RC	5/16"-18 x 4"	50
ZN-30054-C	RC	3/8"-16 x 3/4"	100
ZN-30056-C	RC	3/8"-16 x 7/8"	100
ZN-30058-C	RC	3/8"-16 x 1"	100
ZN-30060-C	RC	3/8"-16 x 1-1/4"	100
ZN-30062-C	RC	3/8"-16 x 1-1/2"	100
ZN-30064-C	RC	3/8"-16 x 2"	100
ZN-30066-C	RC	3/8"-16 x 2-1/2"	50
ZN-30068-C	RC	3/8"-16 x 3"	50
ZN-30070-C	RC	3/8"-16 x 3-1/2"	50
ZN-30072-C	RC	3/8"-16 x 4"	50
ZN-30074-C	RC	1/2"-13 x 1"	25
ZN-30076-C	RC	1/2"-13 x 1-1/4"	25
ZN-30078-C	RC	1/2"-13 x 1-1/2"	25
ZN-30080-C	RC	1/2"-13 x 2"	20
ZN-30082-C	RC	1/2"-13 x 2-1/2"	20
ZN-30084-C	RC	1/2"-13 x 3"	20
ZN-30086-C	RC	1/2"-13 x 3-1/2"	20
ZN-30088-C	RC	1/2"-13 x 4"	20
ZN-30090-C	RP	1/2"-13 x 4-1/2"	20
ZN-30092-C	RP	1/2"-13 x 5"	20
ZN-30094-C	RP	1/2"-13 x 5-1/2"	20
ZN-30096-C	RP	1/2"-13 x 6"	20
ZN-30098-C	RC	5/8"-11 x 1-1/4"	25
ZN-30100-C	RC	5/8"-11 x 1-1/2"	25
ZN-30102-C	RC	5/8"-11 x 2"	25
ZN-30104-C	RC	5/8"-11 x 2-1/2"	20
ZN-30106-C	RC	5/8"-11 x 3"	20
ZN-30108-C	RC	5/8"-11 x 3-1/2"	20
ZN-30110-C	RC	5/8"-11 x 4"	20
ZN-30112-C	RP	5/8"-11 x 4-1/2"	20
ZN-30114-C	RP	5/8"-11 x 5"	15
ZN-30116-C	RP	5/8"-11 x 5-1/2"	15
ZN-30118-C	RP	5/8"-11 x 6"	15
ZN-30120-C	RC	3/4"-10 x 1-1/4"	25
ZN-30122-C	RC	3/4"-10 x 1-1/2"	25
ZN-30124-C	RC	3/4"-10 x 2"	25
ZN-30126-C	RC	3/4"-10 x 2-1/2"	20
ZN-30128-C	RC	3/4"-10 x 3"	20
ZN-30130-C	RC	3/4"-10 x 3-1/2"	20
ZN-30132-C	RC	3/4"-10 x 4"	20
ZN-30134-C	RC	3/4"-10 x 4-1/2"	20
ZN-30136-C	RP	3/4"-10 x 5"	15
ZN-30138-C	RP	3/4"-10 x 5-1/2"	15
ZN-30140-C	RP	3/4"-10 x 6"	15

Métrico

Código	Rosca	Medidas	MIN
ZN-30310-C	RC	M6-1.0 x 12 mm	200
ZN-30312-C	RC	M6-1.0 x 16 mm	200
ZN-30314-C	RC	M6-1.0 x 20 mm	200
ZN-30316-C	RC	M6-1.0 x 25 mm	200
ZN-30318-C	RC	M6-1.0 x 30 mm	200
ZN-30320-C	RC	M6-1.0 x 35 mm	200
ZN-30322-C	RC	M6-1.0 x 40 mm	200
ZN-30324-C	RC	M6-1.0 x 45 mm	200
ZN-30326-C	RC	M6-1.0 x 50 mm	200
ZN-30328-C	RC	M8-1.25 x 12 mm	100
ZN-30330-C	RC	M8-1.25 x 16 mm	100
ZN-30332-C	RC	M8-1.25 x 20 mm	100
ZN-30334-C	RC	M8-1.25 x 25 mm	100
ZN-30336-C	RC	M8-1.25 x 30 mm	100
ZN-30338-C	RC	M8-1.25 x 35 mm	100
ZN-30340-C	RC	M8-1.25 x 40 mm	100
ZN-30342-C	RC	M8-1.25 x 45 mm	100
ZN-30344-C	RC	M8-1.25 x 50 mm	100
ZN-30346-C	RC	M8-1.25 x 55 mm	50
ZN-30348-C	RC	M8-1.25 x 60 mm	50
ZN-30350-C	RC	M10-1.5 x 20 mm	50
ZN-30352-C	RC	M10-1.5 x 25 mm	50
ZN-30354-C	RC	M10-1.5 x 30 mm	50
ZN-30356-C	RC	M10-1.5 x 35 mm	50
ZN-30358-C	RC	M10-1.5 x 40 mm	50
ZN-30360-C	RC	M10-1.5 x 45 mm	50
ZN-30362-C	RC	M10-1.5 x 50 mm	50
ZN-30364-C	RC	M10-1.5 x 55 mm	25
ZN-30366-C	RC	M10-1.5 x 60 mm	25
ZN-30368-C	RC	M10-1.5 x 65 mm	25
ZN-30370-C	RC	M10-1.5 x 70 mm	25
ZN-30372-C	RC	M10-1.5 x 75 mm	25
ZN-30374-C	RC	M10-1.5 x 80 mm	25
ZN-30376-C	RC	M10-1.5 x 85 mm	25
ZN-30378-C	RC	M10-1.5 x 90 mm	25
ZN-30380-C	RC	M10-1.5 x 100 mm	25
ZN-30382-C	RC	M12-1.75 x 20 mm	50
ZN-30384-C	RC	M12-1.75 x 25 mm	50
ZN-30386-C	RC	M12-1.75 x 30 mm	50
ZN-30388-C	RC	M12-1.75 x 35 mm	50
ZN-30390-C	RC	M12-1.75 x 40 mm	50
ZN-30392-C	RC	M12-1.75 x 45 mm	25
ZN-30394-C	RC	M12-1.75 x 50 mm	25
ZN-30396-C	RC	M12-1.75 x 55 mm	25
ZN-30398-C	RC	M12-1.75 x 60 mm	25
ZN-30400-C	RC	M12-1.75 x 65 mm	25
ZN-30402-C	RC	M12-1.75 x 70 mm	25
ZN-30404-C	RC	M12-1.75 x 75 mm	20
ZN-30406-C	RC	M12-1.75 x 80 mm	20
ZN-30408-C	RC	M12-1.75 x 85 mm	20
ZN-30410-C	RC	M12-1.75 x 90 mm	20
ZN-30412-C	RC	M12-1.75 x 100 mm	20
ZN-30414-C	RC	M16-2.0 x 40 mm	25
ZN-30416-C	RC	M16-2.0 x 45 mm	25
ZN-30418-C	RC	M16-2.0 x 50 mm	25
ZN-30420-C	RC	M16-2.0 x 55 mm	20
ZN-30422-C	RC	M16-2.0 x 60 mm	20
ZN-30424-C	RC	M16-2.0 x 65 mm	20
ZN-30426-C	RC	M16-2.0 x 70 mm	20
ZN-30428-C	RC	M16-2.0 x 75 mm	20
ZN-30430-C	RC	M16-2.0 x 80 mm	20
ZN-30432-C	RC	M16-2.0 x 85 mm	20
ZN-30434-C	RC	M16-2.0 x 90 mm	20
ZN-30436-C	RC	M16-2.0 x 100 mm	20

Tornillo Allen Cilíndrico Acero Inoxidable

Acero Inoxidable 304



Fraccional UNF

Código	Medidas	MIN
ZN-31000-C	#4-40 x 3/8"	100
ZN-31005-C	#4-40 x 1/2"	100
ZN-31010-C	#4-40 x 3/4"	100
ZN-31015-C	#5-40 x 3/8"	100
ZN-31020-C	#5-40 x 1/2"	100
ZN-31025-C	#5-40 x 3/4"	100
ZN-31030-C	#5-40 x 1"	100
ZN-31035-C	#5-40 x 1-1/4"	100
ZN-31040-C	#8-32 x 3/8"	100
ZN-31045-C	#8-32 x 1/2"	100
ZN-31050-C	#8-32 x 5/8"	100
ZN-31055-C	#8-32 x 3/4"	100
ZN-31060-C	#8-32 x 1"	100
ZN-31065-C	#10-24 x 1/2"	100
ZN-31070-C	#10-24 x 3/4"	100
ZN-31075-C	#10-24 x 1"	100
ZN-31080-C	#10-24 x 1-1/4"	100
ZN-31085-C	#10-24 x 1-1/2"	100
ZN-31090-C	#10-24 x 2"	100
ZN-31095-C	1/4 x 1/2"	100
ZN-31100-C	1/4 x 3/4"	100
ZN-31105-C	1/4 x 1"	100
ZN-31110-C	1/4 x 1-1/4"	100
ZN-31115-C	1/4 x 1-1/2"	100
ZN-31120-C	1/4 x 1-3/4"	100
ZN-31125-C	1/4 x 2"	100
ZN-31130-C	1/4 x 2-1/2"	100
ZN-31135-C	1/4 x 3"	50
ZN-31140-C	5/16 x 1/2"	100
ZN-31145-C	5/16 x 3/4"	100
ZN-31150-C	5/16 x 1"	100
ZN-31155-C	5/16 x 1-1/4"	100
ZN-31160-C	5/16 x 1-1/2"	100
ZN-31165-C	5/16 x 1-3/4"	100
ZN-31170-C	5/16 x 2"	50
ZN-31175-C	5/16 x 2-1/2"	50
ZN-31180-C	5/16 x 3"	50
ZN-31185-C	3/8 x 3/4"	50
ZN-31190-C	3/8 x 1"	50
ZN-31195-C	3/8 x 1-1/4"	50
ZN-31200-C	3/8 x 1-1/2"	50
ZN-31205-C	3/8 x 1-3/4"	50
ZN-31210-C	3/8 x 2"	50
ZN-31215-C	3/8 x 2-1/2"	50
ZN-31220-C	3/8 x 3"	25
ZN-31225-C	3/8 x 3-1/2"	25
ZN-31230-C	3/8 x 4"	25
ZN-31235-C	1/2 x 4"	25
ZN-31240-C	1/2 x 1-1/4"	25
ZN-31245-C	1/2 x 1-1/2"	25
ZN-31250-C	1/2 x 1-3/4"	25
ZN-31255-C	1/2 x 2"	25
ZN-31260-C	1/2 x 2-1/2"	25
ZN-31265-C	1/2 x 3"	25
ZN-31270-C	1/2 x 3-1/2"	25
ZN-31275-C	1/2 x 4"	25
ZN-31280-C	5/8 x 1 1/4"	1
ZN-31285-C	5/8 x 1-1/2"	1
ZN-31290-C	5/8 x 1-3/4"	1
ZN-31295-C	5/8 x 2"	1
ZN-31300-C	5/8 x 2-1/2"	1
ZN-31305-C	5/8 x 3"	1
ZN-31310-C	5/8 x 3-1/2"	1
ZN-31315-C	5/8 x 4"	1
ZN-31320-C	3/4 x 2"	1
ZN-31325-C	3/4 x 2-1/2"	1
ZN-31330-C	3/4 x 3"	1

Métrico

Código	Medidas	MIN
ZN-31400-C	M3-0.50 x 6 mm	100
ZN-31405-C	M3-0.50 x 8 mm	100
ZN-31410-C	M3-0.50 x 10 mm	100
ZN-31415-C	M3-0.50 x 12 mm	100
ZN-31420-C	M3-0.50 x 16 mm	100
ZN-31425-C	M3-0.50 x 20 mm	100
ZN-31430-C	M4-0.70 x 8 mm	100
ZN-31435-C	M4-0.70 x 10 mm	100
ZN-31440-C	M4-0.70 x 12 mm	100
ZN-31445-C	M4-0.70 x 16 mm	100
ZN-31450-C	M4-0.70 x 20 mm	100
ZN-31455-C	M4-0.70 x 25 mm	100
ZN-31460-C	M4-0.70 x 30 mm	100
ZN-31465-C	M4-0.70 x 35 mm	100
ZN-31470-C	M4-0.70 x 40 mm	100
ZN-31475-C	M5-0.80 x 10 mm	100
ZN-31480-C	M5-0.80 x 12 mm	100
ZN-31485-C	M5-0.80 x 16 mm	100
ZN-31490-C	M5-0.80 x 20 mm	100
ZN-31495-C	M5-0.80 x 25 mm	100
ZN-31500-C	M5-0.80 x 30 mm	100
ZN-31505-C	M5-0.80 x 35 mm	100
ZN-31510-C	M5-0.80 x 40 mm	100
ZN-31515-C	M6-1.00 x 10 mm	100
ZN-31520-C	M6-1.00 x 12 mm	100
ZN-31525-C	M6-1.00 x 16 mm	100
ZN-31530-C	M6-1.00 x 20 mm	100
ZN-31535-C	M6-1.00 x 25 mm	100
ZN-31540-C	M6-1.00 x 30 mm	100
ZN-31545-C	M6-1.00 x 35 mm	100
ZN-31550-C	M6-1.00 x 40 mm	100
ZN-31555-C	M6-1.00 x 45 mm	100
ZN-31560-C	M6-1.00 x 50 mm	100
ZN-31565-C	M8-1.25 x 12 mm	100
ZN-31570-C	M8-1.25 x 16 mm	100
ZN-31575-C	M8-1.25 x 20 mm	100
ZN-31580-C	M8-1.25 x 25 mm	100
ZN-31585-C	M8-1.25 x 30 mm	100
ZN-31590-C	M8-1.25 x 35 mm	100
ZN-31595-C	M8-1.25 x 40 mm	50
ZN-31600-C	M8-1.25 x 45 mm	50
ZN-31605-C	M8-1.25 x 50 mm	50
ZN-31610-C	M8-1.25 x 60 mm	50
ZN-31615-C	M8-1.25 x 70 mm	50
ZN-31620-C	M10-1.50 x 20 mm	50
ZN-31625-C	M10-1.50 x 25 mm	50
ZN-31630-C	M10-1.50 x 30 mm	50
ZN-31635-C	M10-1.50 x 35 mm	50
ZN-31640-C	M10-1.50 x 40 mm	50
ZN-31645-C	M10-1.50 x 45 mm	50
ZN-31650-C	M10-1.50 x 50 mm	50
ZN-31655-C	M10-1.50 x 60 mm	50
ZN-31660-C	M10-1.50 x 70 mm	50
ZN-31665-C	M10-1.50 x 80 mm	25
ZN-31670-C	M12-1.75 x 25 mm	25
ZN-31675-C	M12-1.75 x 30 mm	25
ZN-31680-C	M12-1.75 x 35 mm	25
ZN-31685-C	M12-1.75 x 40 mm	25
ZN-31690-C	M12-1	



Tornillo Allen Cabeza Plana Acero Inoxidable

Acero Inoxidable 304



Fraccional

Código	Medidas	MIN	Presentación
ZN-31800-C	#8 x 3/8"	100	
ZN-31805-C	#8 x 1/2"	100	
ZN-31810-C	#8 x 3/4"	100	
ZN-31815-C	#8 x 1"	100	
ZN-31820-C	#10 x 1/2"	100	
ZN-31825-C	#10 x 3/4"	100	
ZN-31830-C	#10 x 1"	100	
ZN-31835-C	#10 x 1-1/4"	100	
ZN-31840-C	#10 x 1-1/2"	100	
ZN-31845-C	1/4 x 1/2"	100	
ZN-31850-C	1/4 x 3/4"	100	
ZN-31855-C	1/4 x 1"	100	
ZN-31860-C	1/4 x 1-1/4"	100	
ZN-31865-C	1/4 x 1-1/2"	100	
ZN-31870-C	1/4 x 2"	100	
ZN-31875-C	5/16 x 1/2"	100	
ZN-31880-C	5/16 x 3/4"	100	
ZN-31885-C	5/16 x 1"	100	
ZN-31890-C	5/16 x 1-1/4"	50	
ZN-31895-C	5/16 x 1-1/2"	50	
ZN-31900-C	5/16 x 2"	50	
ZN-31905-C	3/8 x 3/4"	100	
ZN-31910-C	3/8 x 1"	100	
ZN-31915-C	3/8 x 1-1/4"	50	
ZN-31920-C	3/8 x 1-1/2"	50	
ZN-31925-C	3/8 x 2"	50	
ZN-31930-C	3/8 x 2-1/2"	50	
ZN-31935-C	3/8 x 3"	50	
ZN-31940-C	1/2 x 3/4	1	
ZN-31945-C	1/2 x 1	1	
ZN-31950-C	1/2 x 1 1/4	1	
ZN-31955-C	1/2 x 1 1/2	1	
ZN-31960-C	1/2 x 2	1	
ZN-31965-C	1/2 x 2 1/2	1	
ZN-31970-C	1/2 x 3	1	

Métrico DIN 7991

Código	Medidas	MIN
ZN-32000-C	M4-0.70 x 8 mm	100
ZN-32005-C	M4-0.70 x 10 mm	100
ZN-32010-C	M4-0.70 x 12 mm	100
ZN-32015-C	M4-0.70 x 16 mm	100
ZN-32020-C	M4-0.70 x 20 mm	100
ZN-32025-C	M4-0.70 x 25 mm	100
ZN-32030-C	M4-0.70 x 30 mm	100
ZN-32035-C	M4-0.70 x 40 mm	100
ZN-32040-C	M5-0.80 x 8 mm	100
ZN-32045-C	M5-0.80 x 10 mm	100
ZN-32050-C	M5-0.80 x 12 mm	100
ZN-32055-C	M5-0.80 x 16 mm	100
ZN-32060-C	M5-0.80 x 20 mm	100
ZN-32065-C	M5-0.80 x 25 mm	100
ZN-32070-C	M5-0.80 x 30 mm	100
ZN-32075-C	M5-0.80 x 40 mm	100
ZN-32080-C	M6-1.00 x 10 mm	100
ZN-32085-C	M6-1.00 x 12 mm	100
ZN-32090-C	M6-1.00 x 16 mm	100
ZN-32095-C	M6-1.00 x 20 mm	100
ZN-32100-C	M6-1.00 x 25 mm	100
ZN-32105-C	M6-1.00 x 30 mm	100
ZN-32110-C	M6-1.00 x 35 mm	100
ZN-32115-C	M6-1.00 x 40 mm	100
ZN-32120-C	M6-1.00 x 50 mm	100
ZN-32125-C	M8-1.25 x 10 mm	100
ZN-32130-C	M8-1.25 x 16 mm	100
ZN-32135-C	M8-1.25 x 20 mm	100
ZN-32140-C	M8-1.25 x 25 mm	100
ZN-32145-C	M8-1.25 x 30 mm	100
ZN-32150-C	M8-1.25 x 35 mm	100
ZN-32155-C	M8-1.25 x 40 mm	50
ZN-32160-C	M8-1.25 x 45 mm	50
ZN-32165-C	M8-1.25 x 50 mm	50
ZN-32170-C	M10-1.50 x 20 mm	50
ZN-32175-C	M10-1.50 x 25 mm	50
ZN-32180-C	M10-1.50 x 30 mm	50
ZN-32185-C	M10-1.50 x 35 mm	50
ZN-32190-C	M10-1.50 x 40 mm	50
ZN-32195-C	M10-1.50 x 45 mm	50
ZN-32200-C	M10-1.50 x 50 mm	50
ZN-32205-C	M12-1.75 x 20 mm	25
ZN-32210-C	M12-1.75 x 25 mm	25
ZN-32215-C	M12-1.75 x 30 mm	25
ZN-32220-C	M12-1.75 x 35 mm	25
ZN-32225-C	M12-1.75 x 40 mm	25
ZN-32230-C	M12-1.75 x 45 mm	25
ZN-32235-C	M12-1.75 x 50 mm	25

Tornillo Allen Cabeza de Botón Acero Inoxidable

Acero Inoxidable 304



Fraccional

Código	Medidas	MIN
ZN-32300-C	#5 x 1/4"	100
ZN-32305-C	#5 x 3/8"	100
ZN-32310-C	#5 x 1/2"	100
ZN-32315-C	#5 x 3/4"	100
ZN-32320-C	#8 x 1/4"	100
ZN-32325-C	#8 x 3/8"	100
ZN-32330-C	#8 x 1/2"	100
ZN-32335-C	#8 x 3/4"	100
ZN-32340-C	#8 x 1"	100
ZN-32345-C	#10 x 1/4"	100
ZN-32350-C	#10 x 3/8"	100
ZN-32355-C	#10 x 1/2"	100
ZN-32360-C	#10 x 3/4"	100
ZN-32365-C	#10 x 1"	100
ZN-32370-C	#10 x 1-1/4"	100
ZN-32375-C	1/4 x 3/8"	100
ZN-32380-C	1/4 x 1/2"	100
ZN-32385-C	1/4 x 3/4"	100
ZN-32390-C	1/4 x 1"	100
ZN-32395-C	1/4 x 1-1/4"	100
ZN-32400-C	1/4 x 1-1/2"	100
ZN-32405-C	5/16 x 3/4"	100
ZN-32410-C	5/16 x 1"	100
ZN-32415-C	5/16 x 1-1/4"	50
ZN-32420-C	5/16 x 1-1/2"	50
ZN-32425-C	3/8 x 1"	50
ZN-32430-C	3/8 x 1-1/2"	50

Métrico

Código	Medidas	MIN
ZN-32500-C	M4-0.70 x 6 mm	100
ZN-32505-C	M4-0.70 x 8 mm	100
ZN-32510-C	M4-0.70 x 10 mm	100
ZN-32515-C	M4-0.70 x 12 mm	100
ZN-32520-C	M4-0.70 x 16 mm	100
ZN-32525-C	M4-0.70 x 20 mm	100
ZN-32530-C	M4-0.70 x 25 mm	100
ZN-32535-C	M4-0.70 x 30 mm	100
ZN-32540-C	M4-0.70 x 40 mm	100
ZN-32545-C	M5-0.80 x 10 mm	100
ZN-32550-C	M5-0.80 x 12 mm	100
ZN-32555-C	M5-0.80 x 16 mm	100
ZN-32560-C	M5-0.80 x 20 mm	100
ZN-32565-C	M5-0.80 x 25 mm	100
ZN-32570-C	M5-0.80 x 30 mm	100
ZN-32575-C	M5-0.80 x 40 mm	100
ZN-32580-C	M6-1.00 x 12 mm	100
ZN-32585-C	M6-1.00 x 16 mm	100
ZN-32590-C	M6-1.00 x 20 mm	100
ZN-32595-C	M6-1.00 x 25 mm	100
ZN-32600-C	M6-1.00 x 30 mm	100
ZN-32605-C	M8-1.25 x 16 mm	100
ZN-32610-C	M8-1.25 x 20 mm	100
ZN-32615-C	M8-1.25 x 25 mm	100
ZN-32620-C	M8-1.25 x 30 mm	100
ZN-32625-C	M8-1.25 x 35 mm	100
ZN-32630-C	M10-1.50 x 20 mm	50
ZN-32635-C	M10-1.50 x 25 mm	50
ZN-32640-C	M10-1.50 x 30 mm	50
ZN-32645-C	M10-1.50 x 35 mm	50
ZN-32650-C	M10-1.50 x 40 mm	50



Opresor Allen Acero Inoxidable

Acero Inoxidable 304



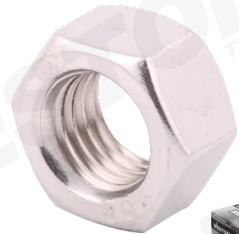
Fraccional

Código	Medidas	MIN
ZE-30010-C	#8-32 x 3/16"	200
ZE-30012-C	#8-32 x 1/4"	200
ZE-30014-C	#8-32 x 3/8"	200
ZE-30016-C	#10-24 x 3/16"	100
ZE-30018-C	#10-24 x 1/4"	100
ZE-30020-C	#10-24 x 5/16"	100
ZE-30022-C	#10-24 x 3/8"	100
ZE-30024-C	1/4"-20 x 5/16"	100
ZE-30026-C	1/4"-20 x 3/8"	100
ZE-30028-C	1/4"-20 x 1/2"	100
ZE-30030-C	1/4"-20 x 5/8"	100
ZE-30032-C	5/16"-18 x 5/16"	100
ZE-30034-C	5/16"-18 x 3/8"	100
ZE-30036-C	5/16"-18 x 1/2"	100
ZE-30038-C	5/16"-18 x 3/4"	100
ZE-30040-C	3/8"-16 x 1/2"	50
ZE-30042-C	3/8"-16 x 3/4"	50
ZE-30044-C	1/2"-13 x 1/2"	50
ZE-30046-C	1/2"-13 x 1"	50
ZE-30048-C	1/2"-13 x 1-1/2"	50
ZE-30050-C	5/8"-11 x 5/8"	25



Tuerca Hexagonal Acero Inoxidable

Acero Inoxidable 304



Fraccional

Código	Medidas	MIN
ZK-30010-C	10-24	300
ZK-30012-C	1/4"-20	300
ZK-30014-C	5/16"-18	300
ZK-30016-C	3/8"-16	300
ZK-30018-C	7/16"-14	200
ZK-30020-C	1/2"-13	100
ZK-30022-C	9/16"-12	100
ZK-30024-C	5/8"-11	100
ZK-30026-C	3/4"-10	50
ZK-30028-C	7/8"-9	50
ZK-30030-C	1"-8	50

Métrica

Código	Medidas	MIN
ZK-30210-C	M4-0.70	300
ZK-30212-C	M5-0.80	300
ZK-30214-C	M6-1.00	300
ZK-30216-C	M8-1.25	200
ZK-30218-C	M10-1.50	100
ZK-30220-C	M12-1.75	100
ZK-30222-C	M14-2.00	100
ZK-30224-C	M16-2.00	50
ZK-30226-C	M18-2.50	50
ZK-30228-C	M20-2.50	50
ZK-30230-C	M24-3.00	50



Tuerca de Seguridad Acero Inoxidable

Con inserto de nailon
Acero Inoxidable 304



Fraccional

Código	Medida	MIN	Código	Medida	MIN
ZK-30610-C	1/4"-20	100	ZK-30620-C	5/8"-11	25
ZK-30612-C	5/16"-18	100	ZK-30622-C	3/4"-10	25
ZK-30614-C	3/8"-16	100	ZK-30624-C	7/8"-9	10
ZK-30616-C	7/16"-14	50	ZK-30626-C	1"-8	10
ZK-30618-C	1/2"-13	50			

Tuerca Hexagonal con Arandela Dentada Acero Inoxidable

Acero Inoxidable 304



Fraccional

Código	Medida	MIN	Código	Medida	MIN
ZK-30110-C	1/4"-20	100	ZK-30120-C	M5-0.80	100
ZK-30112-C	5/16"-18	100	ZK-30122-C	M6-1.00	100
ZK-30114-C	3/8"-16	100	ZK-30124-C	M8-1.25	50
ZK-30116-C	1/2"-13	50	ZK-30126-C	M10-1.50	50
ZK-30118-C	M4-0.70	100	ZK-30128-C	M12-1.75	50



Tuerca Mariposa Acero Inoxidable

Acero Inoxidable 304



Fraccional

Código	Medida	MIN	Código	Medida	MIN
ZK-30410-C	#10-24	100	ZK-30412-C	1/4"-20	100
ZK-30414-C	5/16"-18	100	ZK-30416-C	3/8"-16	100
ZK-30418-C	1/2"-13	50			



Rondana Plana Acero Inoxidable

Acero Inoxidable 304



Fraccional

Código	Medida	MIN	Código	Medida	MIN
ZP-30010-C	1/4"	500	ZP-30210-C	M6	500
ZP-30012-C	5/16"	500	ZP-30212-C	M8	500
ZP-30014-C	3/8"	300	ZP-30214-C	M10	300
ZP-30016-C	7/16"	300	ZP-30216-C	M12	300
ZP-30018-C	1/2"	200	ZP-30218-C	M16	100
ZP-30020-C	5/8"	100	ZP-30220-C	M20	50
ZP-30022-C	3/4"	50	ZP-30222-C	M24	50
ZP-30024-C	7/8"	50			
ZP-30026-C	1"	25			



Rondana de Presión Acero Inoxidable

Acero Inoxidable 304



Fraccional

Código	Medida	MIN	Código	Medida	MIN
ZP-30310-C	1/4"	500	ZP-30510-C	M6	500
ZP-30312-C	5/16"	500	ZP-30512-C	M8	500
ZP-30314-C	3/8"	300	ZP-30514-C	M10	300
ZP-30316-C	7/16"	300	ZP-30516-C	M12	300
ZP-30318-C	1/2"	200	ZP-30518-C	M16	100
ZP-30320-C	5/8"	100	ZP-30520-C	M20	50
ZP-30322-C	3/4"	50	ZP-30522-C	M24	50
ZP-30324-C	7/8"	50			
ZP-30326-C	1"	25			



Pija Hexagonal Punta de Broca Acero Inoxidable

Acero Inoxidable 304
Punta autoroscable
Resistente a la corrosión, a prueba de óxido, no se deforma



Código	Medidas	MIN
ZM-00020	1/4" x 3/4"	
ZM-00005	1/4" x 1"	
ZM-00010	1/4" x 1-1/2"	
ZM-00015	1/4" x 2"	

MIN: 100



Pija Hexagonal Punta de Broca con Rondana Acero Inoxidable

Fabricada en acero inoxidable 410 de alta calidad
Punta auto-rosca
Resistente a la corrosión, a prueba de óxido, no se deforma



Código	Medidas	MIN
ZM-00110	1/4" x 3/4"	
ZM-00100	1/4" x 1"	
ZM-00105	1/4" x 1-1/2"	

MIN: 100



Pija K-Lath Phillips Punta de Broca Acero Inoxidable

Fabricada en acero inoxidable 410 de alta calidad
Punta auto-rosca
Resistente a la corrosión, a prueba de óxido, no se deforma



Código	Medidas	MIN
ZN-32705	#8 x 1/2"	
ZN-32710	#8 x 3/4"	
ZN-32700	#8 x 1"	

MIN: 500



Anillo de Retención Externo Tipo SH Acero Inoxidable



Código	Medida	MIN	Código	Medida	MIN
ZB-5370SS	1/4"	100	ZB-6515	7/8"	100
ZB-5385SS	5/16"	100	ZB-6520	1"	100
ZB-5400SS	3/8"	100	ZB-6525	1-1/8"	50
ZB-5415SS	7/16"	100	ZB-6530	1-3/16"	50
ZB-5435SS	9/16"	100	ZB-6535	1-1/4"	50
ZB-5455SS	11/16"	100	ZB-6540	1-3/8"	50
ZB-5470SS	13/16"	50	ZB-6545	1-1/2"	50
ZB-5485SS	15/16"	50	ZB-6550	1-5/8"	50
ZB-5505SS	1-1/16"	50	ZB-6555	1-3/4"	50
ZB-5525SS	1-5/16"	50	ZB-6560	1-7/8"	50
ZB-6500	1/2"	100	ZB-6565	1-31/32"	50
ZB-6505	5/8"	100	ZB-6570	2"	50
ZB-6510	3/4"	100			



Anillo de Retención Interno Tipo HO Acero Inoxidable



Código	Medida	MIN	Código	Medida	MIN	Código	Medida	MIN
ZB-4940SS	1/4"	100	ZB-4990SS	3/4"	100	ZB-5045SS	1-5/16"	50
ZB-4945SS	5/16"	100	ZB-5000SS	13/16"	100	ZB-5050SS	1-3/8"	50
ZB-4950SS	3/8"	100	ZB-5015SS	15/16"	100	ZB-5065SS	1-1/2"	50
ZB-4955SS	7/16"	100	ZB-5020SS	1"	100	ZB-5075SS	1-5/8"	50
ZB-4965SS	1/2"	100	ZB-5025SS	1-1/16"	50	ZB-5090SS	1-3/4"	50
ZB-4975SS	9/16"	100	ZB-5030SS	1-1/8"	50	ZB-5105SS	1-7/8"	50
ZB-4980SS	5/8"	100	ZB-5040SS	1-1/4"	50	ZB-5115SS	2"	50
ZB-4985SS	11/16"	100						



Anillo de Retención Externo Tipo C Acero Inoxidable



Código	Medida	MIN
ZB-6000	5/16"	

Presentación MIN: 100



WESTON[®]

TOOLS

SÉ PARTE DE NUESTRA
EVOLUCIÓN

NUEVA TECNOLOGÍA
NUEVA IMAGEN
MAYOR PODER



W LA MARCA PARA LA INDUSTRIA

▶ Ver Soldadura